

CABLE GLANDS

Appleton's ATX product line includes a wide selection of both **Increased Safety and Flameproof** cable glands for use with **unarmored and armored cable**.

Appleton's ATX cable glands are available in a wide range of materials from polyamide, nickel-plated brass and stainless steel to withstand any environment. Appleton's ATX cable glands are available with metric or NPT threads. Cable glands are certified for increased safety, flameproof, restricted breathing and dust applications.



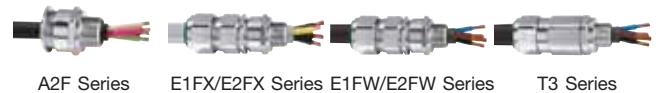
Cable Glands

Description	Page
Introduction to Cable Glands	399
EEXe Series	400-401
Polyamide Cable Glands for Unarmored Cable – Increased Safety	
A2F, E1FX/E2FX, E1FW/E2FW and T3 Series	402-406
Nickel Plated Brass Cable Glands for Unarmored and Armored Cables with Elastomer Seal – Increased Safety and Flameproof	
PX and PX2K Series	407-409
Nickel Plated Brass Cable Glands for Unarmored and Armored Cables with Compound Barrier Seal – Increased Safety and Flameproof	
757, BVE and 737 Series	410-414
Blanking Plugs, Adaptors and Reducers – Increased Safety and Flameproof	
Accessories for Cable Entries	415-417
Nickel Plated Brass Locknuts	
Brass Earth Tag	
Entry Thread Seals	
316L Stainless Steel Serrated Washers	
PVC Shrouds	
Clamp for Lead Sheath Armored Cable Glands	
DB Series	418-425
Drain and Breather Valves	419
Fire Retardant Seals and IIC Elbows	420-421
IIC Flexible Couplings	422-423
IIB Unions – Flameproof	424-425

EEXe Series



A2F, E1FX/E2FX, E1FW/E2FW and T3 Series



PX and PX2K Series



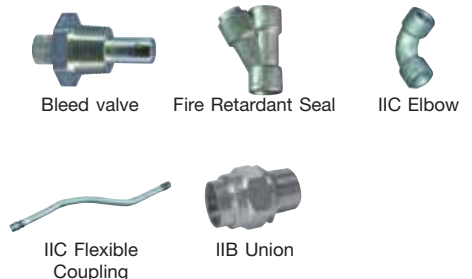
757, BVE and 737 Series



Accessories



DB Series



Cable Glands

Introduction to Cable Glands

Ex d, Ex e & Ex n Cable Gland Selection Chart

Unarmored



Tape
(STA)

Armored



Wire
(SWA)



Braid
(SWB)

Unarmored Cables

Cable Definition	Abbreviation	Cable gland with elastomer seal ring		Cable gland with compound seal
Unarmored		A2F		PX

Armored Cables

Cable Definition	Abbreviation	Cable gland with elastomer seal ring		Cable gland with compound seal
Steel Tape Armor	STA	E1FX	T3	PX2K
Steel Wire Braid	SWB	E1FX	T3	PX2K
Single Wire Armor	SWA	E1FW	T3	PX2K

Armored Cables with Lead Sheath

Cable Definition	Abbreviation	Cable gland with elastomer seal ring		Cable gland with compound seal
Steel Tape Armor	STA, LC	E2FX	T3PB	PX2KPB
Steel Wire Braid	SWB, LC	E2FX	T3PB	PX2KPB
Single Wire Armor	SWA, LC	E2FW	T3PB	PX2KPB

Cable Glands

EEXe Series: Polyamide Cable Glands for Unarmored Cable – Increased Safety



095756
Ex e Certified



095801
Weatherproof IP68
Ex i Certified Application



Entry Thread Seal

Compliance Data:

ATEX - IEC:

Zones 1 & 2, 21 & 22	ATEX	II 2 GD	IEC	CE
Ex e II	Ex tD A21	IP66 / 68		



Operating Temperatures:

-20°C to +55°C

CABLE GLANDS

Cable Glands

EEXe Series: Polyamide Cable Glands for Unarmored Cable – Increased Safety

Zone 1 & 2 – 21 & 22

II 2 GD

ATEX / IEC

IP66/68

Ex e Certified Applications:

- For unarmored cables certified for enclosures with the following protection modes:
 - Ex e increased safety.
 - Ex nR restricted breathing.
 - D dust environment.
- Hazardous areas (gas and dust).
- Onshore and offshore.

Features:

- Black polyamide body.
- Supplied with two polyamide clamping rings.
- Weatherproof elastomer gasket.
- Supplied with sealing gasket.

Materials:

- Body: Polyamide.
- Weatherproof gasket: thermoplastic elastomer.
- Entry thread seal: neoprene.

Weatherproof IP68 or Ex i

Certified Applications:

- For unarmored cables for intrinsic safety Ex i applications in hazardous areas (Gas and Dust).

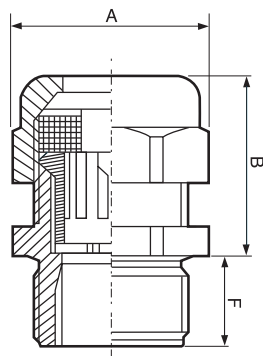
Features:

- Blue polyamide body Ral 5012.
- Supplied with polyamide clamping ring.
- Weatherproof elastomer gasket.
- Supplied with sealing gasket.

Materials:

- Body: polyamide.
- Weatherproof gasket: thermoplastic elastomer.
- Entry thread seal: neoprene.

Dimensions (mm):



Ordering Information:



Ex e Certified

Thread	Cable Capacity (mm)		Dim. Flat A (mm)	Length B (mm)	F (mm)	Weight (Kg)	Volume (dm ³)	Catalog Number	Pack
	Min.	Max.							
M16	3.0	8.5	19.0	24.0	15.0	0.015	0.160	095756	10
M20	6.5	14.5	27.0	30.0	15.0	0.021	0.160	095605	10
M25	8.0	18.5	33.0	33.0	15.0	0.032	0.160	095606	10
M32	10.0	25.0	42.0	43.0	15.0	0.061	0.440	095757	10
M40	24.0	34.0	55.0	47.0	15.0	0.072	0.720	095758	1
M50	28.0	42.0	65.0	49.0	15.0	0.124	0.720	095759	1



Weatherproof IP68

Thread	Cable Capacity (mm)		Dim. Flat A (mm)	Length B (mm)	F (mm)	Weight (Kg)	Volume (dm ³)	Catalog Number	Pack
	Min.	Max.							
M16	2.5	8.0	19.0	27.0	15.0	0.013	0.160	095800	10
M20	5.0	12.0	24.0	30.0	15.0	0.017	0.160	095801	10
M25	7.0	14.0	27.0	35.0	15.0	0.020	0.160	095802	10
M32	14.0	25.0	42.0	42.0	15.0	0.051	0.440	095803	10
M40	18.0	32.0	53.0	52.0	16.0	0.072	0.720	095804	1
M50	24.0	38.5	60.0	55.0	16.0	0.100	0.720	095805	1

Accessories: (Locknut - see accessories section)

Compliances:

Hazardous Area	Gas	Dust
Certification Type	EEXe	
Zones	1-2, 21-22	
Conforming to 94/9/CE ATEX	II 2 GD	
Symbol of Protection ATEX	Ex e II	Ex tD A21
Symbol of Protection IEC		
T Rating	/	
Surface Temperature	N.A.	
Ambient Temperature	-20°C to +55°C	
CE Declaration of Conformity	50233	
ATEX Certificate	LCIE 99 ATEX 6030X	
Index of Protection (solid and liquid)	IP66 (Ex e version), IP68 (Weatherproof version)	

Standards:

Ex Standards	EN / IEC 60079-0; 60079-7; 61241-0; 61241-1
Product Standards	/
Other Standards	ISO 065/1/III (metric thread), EN / IEC 60529

Cable Glands

A2F, E1FX/E2FX, E1FW/E2FW and T3 Series: Nickel Plated Brass Cable Glands for Unarmored and Armored Cables with Elastomer Seal – Increased Safety and Flameproof



A2F Series



E1FX & E2FX Series



E1FW & E2FW Series



T3 Series

Compliance Data:

ATEX – IECEx:

Zone 1 & 2 – 21 & 22	ATEX	II 2 GD	IECEx	CE
Ex d IIC or Ex e II or Ex nR II	Ex tD A21	IP 66 / 68 (10m)		

Operating Temperature:

-60°C to +130°C				
-----------------	--	--	--	--



CABLE GLANDS

Cable Glands

A2F Series: Nickel Plated Brass Cable Glands for Unarmored Cables with Elastomer Seal – Increased Safety and Flameproof

Zone 1 & 2 – 21 & 22

II 2 GD

ATEX / IECEx

IP66/68



A2F Series – Applications:

- Cable glands for unarmored cable certified for enclosures with the following protection modes:
 - Ex d flameproof IIB or IIC (as per §10.4.2 of IEC 60079-14) (Refer to Guide for Use of Electrical Products in Hazardous Locations - pages G43 - G46.)
 - Ex e increased safety
 - Ex nR restricted breathing
 - D dust environment
- Hazardous areas (gas and dust)
- Onshore and offshore

Features:

- Elastomer displacement seal for unarmored cable provides a combined flameproof and weatherproof seal on the outer sheath

of the cable.

Materials:

- Body: nickel plated brass (suffix 5).
- Seal: LSF (Low Smoke Fume) thermoplastic elastomer.

Options:

- 316L stainless steel version: replace last digit 5 with 4.
Example: 25 A2F 075 5 – 25 A2F 075 4.
- Brass version: remove last digit 5.
Example: 25 A2F 075 5 – 25 A2F 075.

Ordering Information:

Cable Gland Size	Cable Capacity A (mm)		Dim. D (mm)		Length F (mm)	Catalog Numbers						Weight (kg)
	Min.	Max.	Corner	Flat		Metric*		NPT		NPT (other versions)		
2016	3.2	8.7	26.6	24.0	21.0	M20	2016 A2F 5	1/2"	2016 A2F 050 5	3/4"	2016 A2F 075 5	0.07
20S	6.1	11.7	26.6	24.0	21.0	M20	20S A2F 5	1/2"	20S A2F 050 5	3/4"	20S A2F 075 5	0.06
20	6.5	14.0	31.0	27.0	24.0	M20	20 A2F 5	1/2"	20 A2F 050 5	3/4"	20 A2F 075 5	0.06
25	11.1	20.0	39.0	36.0	26.0	M25	25 A2F 5	3/4"	25 A2F 075 5	1"	25 A2F 100 5	0.12
32	17.0	26.3	45.0	41.0	27.0	M32	32 A2F 5	1"	32 A2F 100 5	1-1/4"	32 A2F 125 5	0.13
40	23.5	32.2	53.5	50.0	28.0	M40	40 A2F 5	1-1/4"	40 A2F 125 5	1-1/2"	40 A2F 150 5	0.18
50S	31.0	38.2	61.0	55.0	29.0	M50	50S A2F 5	1-1/2"	50S A2F 150 5	2"	50S A2F 200 5	0.24
50	35.6	44.1	66.0	60.0	30.0	M50	50 A2F 5	2"	50 A2F 200 5	2-1/2"	50 A2F 250 5	0.24
63S	41.5	50.0	77.5	70.0	30.0	M63	63S A2F 5	2"	63S A2F 200 5	2-1/2"	63S A2F 250 5	0.37
63	47.2	56.0	84.0	75.0	30.0	M63	63 A2F 5	2-1/2"	63 A2F 250 5	3"	63 A2F 300 5	0.36
75S	54.0	62.0	87.0	79.0	32.0	M75	75S A2F 5	2-1/2"	75S A2F 250 5	3"	75S A2F 300 5	0.42
75	61.1	68.0	94.0	84.0	32.0	M75	75 A2F 5	3"	75 A2F 300 5	3-1/2"	75 A2F 350 5	0.39
90	66.6	80.0	120.0	108.0	44.0	M90	90 A2F 5	3"	90 A2F 300 5	3-1/2"	90 A2FX 350 5	1.48
100	76.0	91.0	138.0	122.0	48.0	M100	100 A2F 5	4"	100 A2F 400 5	-	-	1.62

*Entry thread seal not supplied, see accessories section.

Accessories: (Locknut, entry thread seal, serrated washer, earth tag and shroud – see accessories section)

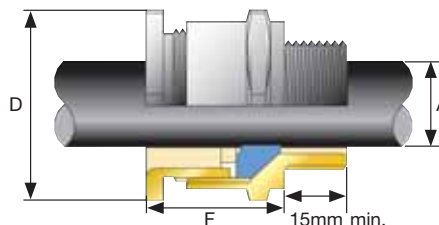
Compliances:

Hazardous Area	Gas	Dust
Certification Type	A2F	
Zones	1–2, 21–22	
Conforming to 94/9/CE ATEX	II 2 GD	
Symbol of Protection ATEX	Ex d IIC, Ex e II,	Ex tD A21
Symbol of Protection IEC	Ex nR II	
T Rating	–	
Surface Temperature	N.A.	
Ambient Temperature	–60°C to +130°C	
CE Declaration of Conformity	DC07001	
ATEX Certificate	SIRA 06 ATEX 1097X	
IECEx Certificate	IECEx SIR 06.0043X	
Other Certifications	CSA, GOST, Lloyds, DNV, ABS	
Index of Protection (solid and liquid)	IP66 / IP68 (10m)	

Standards:

Ex Standards	EN / IEC 60079–0; 60079–1; 60079–7; 60079–15; 61241–0; 61241–1
Product Standards	BS 6121, NF E 03 601 (conical thread); ISO 065/1/III (metric thread)

Dimensions (mm):



Cable Glands

E1FX / E2FX Series: Nickel Plated Brass Cable Glands for Armored Cables with Elastomer Seal – Increased Safety and Flameproof

Zone 1 & 2 – 21 & 22

II 2 GD

ATEX / IECEx

IP66



E1FX & E2FX Series – Applications:

- Cable gland for armored cables (braid, tape, tape with lead sheath) certified for enclosures with the following protection modes:
 - Ex d flameproof IIB or IIC (as per §10.4.2 of IEC 60079-14) (Refer to Guide for Use of Electrical Products in Hazardous Locations - Pages G43 - G46.)
 - Ex e increased safety
 - Ex nR restricted breathing
 - D dust environment
- Hazardous areas (gas and dust)
- Onshore and offshore

Features:

- Cable gland with elastomer seal for use in hazardous areas with braided and tape armor cable.
- The cable gland allows mechanical cable retention and earth continuity via cable armor termination.

- A detachable armor cone and AnyWay clamping ring arrangement facilitates remote make off and enables cable to be disconnected from the equipment.
- Inspection of the armor can be carried out while still maintaining the explosion-proof protection mode of the enclosure.

Materials:

- Body: nickel plated brass (suffix 5).
- Seal: LSF (Low Smoke Fume) thermoplastic elastomer.
 - Inner displacement seal and LRS (Load Retention seal) outer seal.

Options:

- Lead sheath version – E2FX series: Replace digit 1 with 2. Example: 32 E1FX 5 – 32 E2FX 5.
- Brass version: remove last digit 5. Example: 25 E1FX 075 5 – 25 E1FX 075.

Ordering Information:

Cable Gland Size	Cable Capacity				Dim. D (mm)		Length F (mm)	Catalog Numbers						Weight (kg)
	Inner A		Outer B		Corner	Flat		Metric*		NPT		NPT (other versions)		
	Min.	Max.	Min.	Max.										
2016	3.1	8.7	6.1	11.5	26.6	24.0	58.5	M20	2016 E1FX 5	1/2"	2016 E1FX 050 5	3/4"	2016 E1FX 075 5	0.16
20S	6.1	11.7	9.5	15.9	26.6	24.0	58.5	M20	20S E1FX 5	1/2"	20S E1FX 050 5	3/4"	20S E1FX 075 5	0.16
20	6.5	14.0	12.5	20.9	33.3	30.5	60.5	M20	20 E1FX 5	1/2"	20 E1FX 050 5	3/4"	20 E1FX 075 5	0.21
25S	11.1	20.0	14.0	22.0	40.5	37.5	67.5	M25	25S E1FX 5	3/4"	25S E1FX 075 5	1"	25S E1FX 100 5	0.32
25	11.1	20.0	18.2	26.2	40.5	37.5	67.5	M25	25 E1FX 5	3/4"	25 E1FX 075 5	1"	25 E1FX 100 5	0.32
32	17.0	26.3	23.7	33.9	51.0	46.0	69.5	M32	32 E1FX 5	1"	32 E1FX 100 5	1-1/4"	32 E1FX 125 5	0.45
40	22.0	32.2	27.9	40.4	61.0	55.0	78.0	M40	40 E1FX 5	1-1/4"	40 E1FX 125 5	1-1/2"	40 E1FX 150 5	0.68
50S	29.5	38.2	35.2	46.7	66.5	60.0	75.5	M50	50S E1FX 5	1-1/2"	50S E1FX 150 5	2"	50S E1FX 200 5	0.73
50	35.6	44.1	40.4	53.1	78.6	70.0	80.5	M50	50 E1FX 5	2"	50 E1FX 200 5	2-1/2"	50 E1FX 250 5	0.75
63S	40.1	50.0	45.6	59.4	83.2	75.0	91.5	M63	63S E1FX 5	2"	63S E1FX 200 5	2-1/2"	63S E1FX 250 5	1.34
63	47.2	56.0	54.6	65.9	89.0	80.0	92.0	M63	63 E1FX 5	2-1/2"	63 E1FX 250 5	3"	63 E1FX 300 5	1.44
75S	52.8	62.0	59.0	72.1	101.6	89.0	99.0	M75	75S E1FX 5	2-1/2"	75S E1FX 250 5	3"	75S E1FX 300 5	2.07
75	59.1	68.0	66.7	78.5	111.1	99.0	102.0	M75	75 E1FX 5	3"	75 E1FX 300 5	3-1/2"	75 E1FX 350 5	2.62
90	66.6	80.0	76.2	90.4	128.6	114.0	120.0	M90	90 E1FX 5	3"	90 E1FX 300 5	3-1/2"	90 E1FX 350 5	4.17
100	76.0	91.0	86.1	101.5	138.0	123.0	148.0	M100	100 E1FX 5	4"	100 E1FX 400 5	-	-	4.52

*Entry thread seal not supplied, see accessories section.

Accessories: (Locknut, entry thread seal, serrated washer, earth tag and shroud – see accessories section)

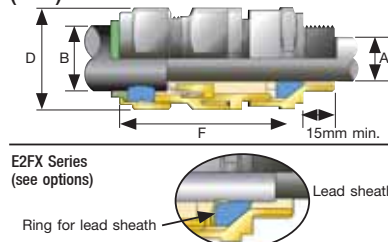
Compliances:

Hazardous Area	Gas	Dust
Certification Type	E1FX/Z - E2FX/Z	
Zones	1-2, 21-22	
Conforming to 94/9/CE ATEX	II 2 GD	
Symbol of Protection ATEX	Ex d IIC, Ex e II,	Ex tD A21
Symbol of Protection IEC	Ex nR II	
T Rating	-	
Surface Temperature	N.A.	
Ambient Temperature	-60°C to +130°C	
CE Declaration of Conformity	DC07001	
ATEX Certificate	SIRA 06 ATEX 1097X	
IECEx Certificate	IECEx SIR 06.0043X	
Other Certifications	GOST	
Index of Protection (solid and liquid)	IP66	

Standards:

Ex Standards	EN / IEC 60079-0; 60079-1; 60079-7; 60079-15; 61241-0; 61241-1
Product Standards	BS 6121, NF E 03 601 (conical thread); ISO 065/I/III (metric thread)
Other Standards	GOST

Dimensions (mm):



Cable Glands

E1FW / E2FW: Nickel Plated Brass Cable Glands for Armored Cables with Elastomer Seal – Increased Safety and Flameproof

Zone 1 & 2 – 21 & 22

⊕ II 2 GD

ATEX / IECEx

IP66



E1FW & E2FW Series – Applications:

- Cable gland for Single Wire Armored cables (SWA with wire and lead sheath) certified for enclosures with the following protection modes:
 - Ex d flameproof IIB or IIC (as per §10.4.2 of IEC 60079-14) (Refer to Guide for Use of Electrical Products in Hazardous Locations - Pages G43 - G46).
 - Ex e increased safety.
 - Ex nR restricted breathing.
 - D dust environment.
- Hazardous areas (gas and dust).
- Onshore and offshore.

Features:

- Cable gland with elastomer seal for use in hazardous areas with Single Wire Armor (SWA) cable.
- The cable gland allows mechanical cable retention and

earth continuity via cable armor termination.

- A detachable armor cone and AnyWay clamping ring arrangement facilitates remote make off and enables cable to be disconnected from the equipment.
- Inspection of the armor can be carried out while still maintaining the protection mode of the enclosure.

Materials:

- Body: nickel plated brass (suffix 5).
- Seal: LSF (Low Smoke Fume) thermoplastic elastomer.
 - Inner displacement seal and LRS (Load Retention seal) outer seal.

Options:

- Lead sheath version – E2FW series: Replace digit 1 with 2. Example: 32 E1FW 5 – 32 E2FW 5.
- Brass version: remove last digit 5. Example: 25 E1FW 075 5 – 25 E1FW 075.

Ordering Information:

Cable Gland Size	Cable Capacity				Dim. D (mm)		Length F (mm)	Catalog Numbers						Weight (kg)
	Inner A		Outer B		Corner	Flat		Metric*		NPT		NPT (other versions)		
	Min.	Max.	Min.	Max.										
2016	3.1	8.7	6.1	11.5	26.6	24.0	58.5	M20	2016 E1FW 5	1/2"	2016 E1FW 050 5	3/4"	2016 E1FW 075 5	0.16
20S	6.1	11.7	9.5	15.9	26.6	24.0	58.5	M20	20S E1FW 5	1/2"	20S E1FW 050 5	3/4"	20S E1FW 075 5	0.16
20	6.5	14.0	12.5	20.9	33.3	30.5	60.5	M20	20 E1FW 5	1/2"	20 E1FW 050 5	3/4"	20 E1FW 075 5	0.20
25S	11.1	20.0	14.0	22.0	40.5	37.5	67.5	M25	25S E1FW 5	3/4"	25S E1FW 075 5	1"	25S E1FW 100 5	0.32
25	11.0	20.0	18.2	26.2	40.5	37.5	67.5	M25	25 E1FW 5	3/4"	25 E1FW 075 5	1"	25 E1FW 100 5	0.32
32	17.0	26.3	23.7	33.9	51.0	46.0	69.5	M32	32 E1FW 5	1"	32 E1FW 100 5	1-1/4"	32 E1FW 125 5	0.45
40	22.0	32.2	27.9	40.4	61.0	55.0	78.0	M40	40 E1FW 5	1-1/4"	40 E1FW 125 5	1-1/2"	40 E1FW 150 5	0.67
50S	29.5	38.2	35.2	46.7	66.5	60.0	75.5	M50	50S E1FW 5	1-1/2"	50S E1FW 150 5	2"	50S E1FW 200 5	0.73
50	35.6	44.1	40.4	53.1	78.6	70.0	80.5	M50	50 E1FW 5	2"	50 E1FW 200 5	2-1/2"	50 E1FW 250 5	0.75
63S	40.1	50.0	45.6	59.4	83.2	75.0	91.5	M63	63S E1FW 5	2"	63S E1FW 200 5	2-1/2"	63S E1FW 250 5	1.34
63	47.2	56.0	54.6	65.9	89.0	80.0	92.0	M63	63 E1FW 5	2-1/2"	63 E1FW 250 5	3"	63 E1FW 300 5	1.44
75S	52.8	62.0	59.0	72.1	101.6	89.0	99.0	M75	75S E1FW 5	2-1/2"	75S E1FW 250 5	3"	75S E1FW 300 5	2.07
75	59.1	68.0	66.7	78.5	111.1	99.0	102.0	M75	75 E1FW 5	3"	75 E1FW 300 5	3-1/2"	75 E1FW 350 5	2.62
90	66.6	80.0	76.2	90.4	128.6	114.0	120.0	M90	90 E1FW 5	3"	90 E1FW 300 5	3-1/2"	90 E1FW 350 5	4.17
100	76.0	91.0	86.1	101.5	138.0	123.0	148.0	M100	100 E1FW 5	4"	100 E1FW 400 5	-	-	4.52

*Entry thread seal not supplied, see accessories section.

Accessories: (Locknut, entry thread seal, serrated washer, earth tag and shroud - see accessories section)

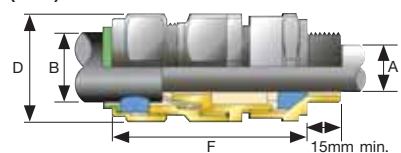
Compliances:

Hazardous Area	Gas	Dust
Certification Type	E1FW/Z - E2FW/Z	
Zones	1-2, 21-22	
Conforming to 94/9/CE ATEX	⊕ II 2 GD	
Symbol of Protection ATEX	Ex d IIC, Ex e II,	Ex tD A21
Symbol of Protection IEC	Ex nR II	
T Rating	-	
Surface Temperature	N.A.	
Ambient Temperature	-60°C to +130°C	
CE Declaration of Conformity	DC07001	
ATEX Certificate	SIRA 06 ATEX 1097X	
IECEx Certificate	IECEx SIR 06.0043X	
Other Certifications	GOST	
Index of Protection (solid and liquid)	IP66	

Standards:

Ex Standards	EN / IEC 60079-0; 60079-1; 60079-7; 60079-15; 61241-0; 61241-1
Product Standards	BS 6121, NF E 03 601 (conical thread); ISO 065/I/III (metric thread)
Other Standards	GOST

Dimensions (mm):



E2FW Series (see options)



Cable Glands

T3 Series: Nickel Plated Brass Cable Glands for Armored Cables with Elastomer Seal – Increased Safety and Flameproof

Zone 1 & 2 – 21 & 22

⊕ II 2 GD

ATEX / IECEx

IP66 / 68 (10 m)



T3 Series – Applications:

- Cable gland for all types of armored cable certified for enclosures with the following protection modes:
 - Ex d flameproof IIB or IIC (as per §10.4.2 of IEC 60079-14) (Refer to Guide for Use of Electrical Products in Hazardous Locations - Pages G43 - G46.).
 - Ex e increased safety.
 - Ex nR restricted breathing.
 - D dust environment.
- Hazardous areas (gas and dust).
- Onshore and offshore.

Features:

- Cable gland with elastomer seal for use in hazardous areas with all types of armored cable.
- This product utilizes a unique Compensating Displacement Seal (CDS) system which provides full compatibility with restricted breathing equipment.
- The CDS system is designed to alleviate any pressure on soft bedded cables.
- The cable gland allows mechanical cable retention and earth continuity via armor termination.

- A reversible armor cone and AnyWay universal clamping ring arrangement allows the cable to be easily disconnected from equipment.
- The cable gland is IP66 / 68 and complies with deluge protection tests.
- Inspection of the armor can be carried out while still maintaining the protection mode of the enclosure.

Materials:

- Body: nickel plated brass (suffix 5).
- Seal: LSF (Low Smoke Fume) thermoplastic elastomer.
 - Inner CDS system and LRS (Load Retention Seal) outer seal.

Options:

- 316L stainless steel version: replace last digit 5 with 4.
Example: 25 T3 075 5 – 25 T3 075 4.
- Lead sheath version: replace T3 with T3PB.
Example: 25 T3 075 5 – 25 T3PB 075 5.
- Brass version: remove last digit 5.
Example: 25 T3 075 5 – 25 T3 075.

Ordering Information:

Cable Gland Size	Cable Capacity				Dim. D (mm)		Length F (mm)		Catalog Numbers						Weight (kg)
	Inner A		Outer B		Corner	Flat			Metric*		NPT		NPT (other versions)		
	Min.	Max.	Min.	Max.											
2016	3.1	8.7	6.1	11.5	26.6	24.0	65.0	M20	2016 T3 5	1/2"	2016 T3 050 5	3/4"	2016 T3 075 5	0.17	
20S	6.1	11.7	9.5	15.9	26.6	24.0	64.0	M20	20S T3 5	1/2"	20S T3 050 5	3/4"	20S T3 075 5	0.17	
20	6.5	14.0	12.5	20.9	33.3	30.5	63.0	M20	20 T3 5	1/2"	20 T3 050 5	3/4"	20 T3 075 5	0.26	
25S	11.1	20.0	14.0	22.0	40.5	37.5	74.0	M25	25S T3 5	3/4"	25S T3 075 5	1"	25S T3 100 5	0.38	
25	11.1	20.0	18.2	26.2	40.5	37.5	76.0	M25	25 T3 5	3/4"	25 T3 075 5	1"	25 T3 100 5	0.38	
32	17.0	26.3	23.7	33.9	51.0	46.0	80.0	M32	32 T3 5	1"	32 T3 100 5	1-1/4"	32 T3 125 5	0.56	
40	22.0	32.2	27.9	40.4	61.0	55.0	75.0	M40	40 T3 5	1-1/4"	40 T3 125 5	1-1/2"	40 T3 150 5	0.85	
50S	29.5	38.2	35.2	46.7	66.5	60.0	93.0	M50	50S T3 5	1-1/2"	50S T3 150 5	2"	50S T3 200 5	1.05	
50	35.6	44.1	40.4	53.1	78.6	70.0	100.0	M50	50 T3 5	2"	50 T3 200 5	2-1/2"	50 T3 250 5	1.52	
63S	40.1	50.0	45.6	59.4	83.2	75.0	95.0	M63	63S T3 5	2"	63S T3 200 5	2-1/2"	63S T3 250 5	1.75	
63	47.2	56.0	54.6	65.9	89.0	80.0	98.0	M63	63 T3 5	2-1/2"	63 T3 250 5	3"	63 T3 300 5	1.68	
75S	52.8	62.0	59.0	72.1	101.6	89.0	105.0	M75	75S T3 5	2-1/2"	75S T3 250 5	3"	75S T3 300 5	2.34	
75	59.1	68.0	66.7	78.5	111.1	99.0	112.0	M75	75 T3 5	3"	75 T3 300 5	3-1/2"	75 T3 350 5	3.20	
90	66.6	80.0	76.2	90.4	128.6	114.0	132.0	M90	90 T3 5	3"	90 T3 300 5	3-1/2"	90 T3 350 5	5.10	
100	76.0	91.0	86.1	101.5	138.0	123.0	160.0	M100	100 T3 5	4"	100 T3 400 5	-	-	6.30	

*Entry thread seal not supplied, see accessories section.

Accessories: (Locknut, entry thread seal, serrated washer, earth tag and shroud - see accessories section)

Compliances:

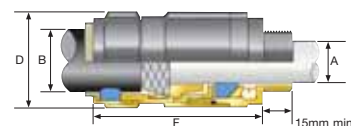
Hazardous Area	Gas	Dust
Certification Type	T3CDS	
Zones	1-2, 21-22	
Conforming to 94/9/CE ATEX	⊕ II 2 GD	
Symbol of Protection ATEX	Ex d IIC, Ex e II,	Ex tD A21
Symbol of Protection IEC	Ex nR II	
T Rating	-	
Surface Temperature	N.A.	
Ambient Temperature	-60°C to +130°C	
CE Declaration of Conformity	DC07001	
ATEX Certificate	SIRA 06 ATEX 1283X	
IECEx Certificate	IECEx SIR 07.005X	
Other Certifications	CSA, UL, GOST, Lloyds, DNV, ABS	
Index of Protection (solid and liquid)	IP66/68 (10m)	

Standards:

Ex Standards	EN / IEC 60079-0; 60079-1; 60079-7; 60079-15; 61241-0; 61241-1
Product Standards	BS 6121, NF E 03 601 (conical thread); ISO 065/III (metric thread)
Other Standards	GOST, UL, CSA

Dimensions (mm):

T3 Series



Cable Glands

PX and PX2K Series: Nickel Plated Brass Cable Glands for Unarmored and Armored Cables with Compound Barrier Seal – Increased Safety and Flameproof



PX Series



PX2K Series

Compliance Data:

ATEX – IECEx:



Zone 1 & 2 – 21 & 22	ATEX	II 2 GD	IECEx	CE
Ex d IIC or Ex e II or Ex nR II	Ex tD A21	IP 66/68 (10m)		

Operating Temperature:

-60°C to +100°C				
-----------------	--	--	--	--

CABLE GLANDS

Cable Glands

PX Series: Nickel Plated Brass Cable Glands for Unarmored Cables with Compound Barrier Seal – Increased Safety and Flameproof

Zone 1 & 2 – 21 & 22

Ex II 2 GD

ATEX / IECEx

IP66/68 (10 m)



PX (PXSS2K) Series – Applications:

- Cable gland for unarmored cables certified for enclosures with the following protection modes:
 - Ex d flameproof IIB or IIC (as per §10.4.2 of IEC 60079-14) (Refer to Guide for Use of Electrical Products in Hazardous Locations - Pages G43 - G46.).
 - Ex e increased safety.
 - Ex nR restricted breathing.
 - D dust environment.
- Hazardous areas (gas and dust).
- Onshore and offshore.

Features:

- Cable gland with compound barrier seal for use in hazardous areas with all types of unarmored cables.
- The cable gland provides mechanical cable retention.

- A combined detachable spacer and compound tube allows the cable to be easily disconnected from the equipment.
- The cable gland is IP66 / 68 and complies with deluge protection tests.
- Epoxy resin supplied with the cable gland.

Materials:

- Body: nickel plated brass (suffix 5).
- Epoxy resin barrier compound.
- Seal: LSF (Low Smoke Fume) thermoplastic elastomer displacement outer seal.

Options:

- 316L stainless steel version: replace last digit 5 with 4.
Example: 25 PX 075 5 – 25 PX 075 4.
- Brass version: remove last digit 5.
Example: 25 PX 075 5 – 25 PX 075.

Ordering Information:

Cable Gland Size	Resin A		Cable (mm) Outer B		Dim. D (mm)		Length F (mm)	Catalog Numbers						Weight (kg)
	Ø (mm)	(1)	Min.	Max.	Corner	Flat		Metric*		NPT		NPT (other versions)		
20S/16	12.6	15	3.0	8.7	26.6	24.0	58.5	M20	2016 PX 5	1/2"	2016 PX 050 5	3/4"	2016 PX 075 5	0.15
20S	12.6	15	6.1	11.7	26.6	24.0	58.5	M20	20S PX 5	1/2"	20S PX 050 5	3/4"	20S PX 075 5	0.15
20	12.6	15	6.5	14.0	33.3	30.5	60.5	M20	20 PX 5	1/2"	20 PX 050 5	3/4"	20 PX 075 5	0.15
25	17.5	29	11.1	20.0	40.5	37.5	67.5	M25	25 PX 5	3/4"	25 PX 075 5	1"	25 PX 100 5	0.27
32	23.6	51	17.0	26.3	51.0	46.0	69.5	M32	32 PX 5	1"	32 PX 100 5	1-1/4"	32 PX 125 5	0.29
40	30.0	80	22.0	32.1	61.0	55.0	78.0	M40	40 PX 5	1-1/4"	40 PX 125 5	1-1/2"	40 PX 150 5	0.40
50S	36.6	122	29.5	38.2	66.5	60.0	75.5	M50	50S PX 5	1-1/2"	50S PX 150 5	2"	50S PX 200 5	0.49
50	41.0	149	35.6	44.1	78.6	70.0	80.5	M50	50 PX 5	2"	50 PX 200 5	2-1/2"	50 PX 250 5	0.51
63S	47.9	205	40.1	50.1	83.2	75.0	91.5	M63	63S PX 5	2"	63S PX 200 5	2-1/2"	63S PX 250 5	0.60
63	53.7	259	47.2	56.0	89.0	80.0	92.0	M63	63 PX 5	2-1/2"	63 PX 250 5	3"	63 PX 300 5	0.62
75S	59.8	230	52.8	62.0	101.6	89.0	99.0	M75	75S PX 5	2-1/2"	75S PX 250 5	3"	75S PX 300 5	1.05
75	64.3	364	59.1	68.0	111.1	99.0	102.0	M75	75 PX 5	3"	75 PX 300 5	3-1/2"	75 PX 350 5	1.15

*Entry thread seal not supplied, see accessories section.

(1) Number of cores (Max.)

Accessories: (Locknut, entry thread seal, serrated washer, earth tag and shroud - see accessories section)

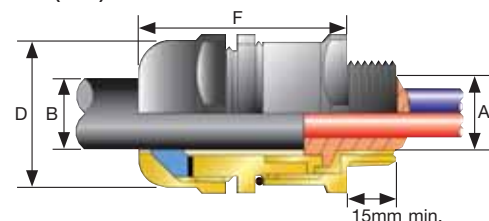
Compliances:

Hazardous Area	Gas	Dust
Certification Type	PXSS2K	
Zones	1-2, 21-22	
Conforming to 94/9/CE ATEX	Ex II 2 GD	
Symbol of Protection ATEX	Ex d IIC, Ex e II,	Ex tD A21
Symbol of Protection IEC	Ex nR II	
T Rating	-	
Surface Temperature	N.A.	
Ambient Temperature	-60°C to +100°C	
CE Declaration of Conformity	DC07001	
ATEX Certificate	SIRA 06 ATEX 1097X	
IECEx Certificate	IECEx SIR 06.0044X	
Other Certifications	CSA, UL, GOST, Lloyds, DNV, ABS	
Index of Protection (solid and liquid)	IP66 / IP68 (10 m)	

Standards:

Ex Standards	EN / IEC 60079-0; 60079-1; 60079-7; 60079-15; 61241-0; 61241-1
Product Standards	BS 6121, NF E 03 601 (conical thread); ISO 065/I/III (metric thread)
Other Standards	GOST, UL, CSA

Dimensions (mm):



Cable Glands

PX2K Series: Nickel Plated Brass Cable Glands for All Types of Armored Cables

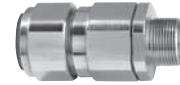
(Braids, Tape and Wire with Lead Sheath Version) with Compound Barrier Seal – Increased Safety and Flameproof

Zone 1 & 2 – 21 & 22

Ⓢ II 2 GD

ATEX / IECEx

IP66/68 (10 m)



PX2K Series – Applications:

- Cable gland for all types of armored cables (braid, tape, wire and lead sheath version) certified for enclosures with the following protection modes:
 - Ex d flameproof IIB or IIC (as per §10.4.2 of IEC 60079-14) (Refer to Guide for Use of Electrical Products in Hazardous Locations - Pages G43 - G46.).
 - Ex e increased safety.
 - Ex nR restricted breathing.
 - D dust environment.
- Hazardous areas (gas and dust).
- Onshore and offshore.

Features:

- Cable gland with compound barrier seal for use in hazardous areas with all types of armored cables (braid, tape and wire).
- The cable gland provides mechanical cable retention and earth continuity via cable armor termination.
- A combined detachable armor cone and compound tube, together with AnyWay universal clamping ring arrangement

allows the cable to be easily disconnected from the equipment.

- The cable gland is IP66 / 68 and complies with deluge protection tests.
- The cable gland is supplied with epoxy resin and two detachable armor cones.

Materials:

- Body: nickel plated brass (suffix 5).
- Epoxy resin barrier compound.
- Seal: LSF (Low Smoke Fume) thermoplastic elastomer displacement outer seal.

Options:

- 316L stainless steel version: replace last digit 5 with 4.
Example: 25 PX2K 075 5 – 25 PX2K 075 4.
- Lead sheath version: Replace PX2K with PX2KPB. Example: 25 PX2K 075 5 – 25 PX2KPB 075 5.
- Brass version: remove last digit 5.
Example: 25 PX2K 075 5 – 25 PX2K 075.

Ordering Information:

Cable Gland Size	Resin A		Cable (mm) Outer B		Dim. D (mm)		Length F (mm)	Catalog Numbers						Weight (kg)
	Ø (mm)	(1)	Min.	Max.	Corner	Flat		Metric*			NPT			
								M20	M25	M32	M40	M50	M63	
2016	12.6	15	6.1	11.5	26.6	24.0	58.5	M20	2016 PX2K 5	1/2"	2016 PX2K 050 5	3/4"	2016 PX2K 075 5	0.20
20S	12.6	15	9.5	15.9	26.6	24.0	58.5	M20	20S PX2K 5	1/2"	20S PX2K 050 5	3/4"	20S PX2K 075 5	0.20
20	12.6	15	12.5	20.9	33.3	30.5	60.5	M20	20 PX2K 5	1/2"	20 PX2K 050 5	3/4"	20 PX2K 075 5	0.23
25S	17.5	29	14.0	22.0	40.5	37.5	67.5	M25	25S PX2K 5	3/4"	25S PX2K 075 5	1"	25S PX2K 100 5	0.33
25	17.5	29	18.2	26.2	40.5	37.5	67.5	M25	25 PX2K 5	3/4"	25 PX2K 075 5	1"	25 PX2K 100 5	0.33
32	23.6	51	23.7	33.9	51.0	46.0	69.5	M32	32 PX2K 5	1"	32 PX2K 100 5	1-1/4"	32 PX2K 125 5	0.51
40	30.0	80	27.9	40.4	61.0	55.0	78.0	M40	40 PX2K 5	1-1/4"	40 PX2K 125 5	1-1/2"	40 PX2K 150 5	0.72
50S	36.6	122	35.2	46.7	66.5	60.0	75.5	M50	50S PX2K 5	1-1/2"	50S PX2K 150 5	2"	50S PX2K 200 5	0.82
50	41.0	149	40.4	53.1	78.6	70.0	80.5	M50	50 PX2K 5	2"	50 PX2K 200 5	2-1/2"	50 PX2K 250 5	0.86
63S	47.9	205	45.6	59.4	83.2	75.0	91.5	M63	63S PX2K 5	2"	63S PX2K 200 5	2-1/2"	63S PX2K 250 5	1.45
63	53.7	259	54.6	65.9	89.0	80.0	92.0	M63	63 PX2K 5	2-1/2"	63 PX2K 250 5	3"	63 PX2K 300 5	1.60
75S	59.8	320	59.0	72.1	101.6	89.0	99.0	M75	75S PX2K 5	2-1/2"	75S PX2K 250 5	3"	75S PX2K 300 5	2.30
75	64.3	364	66.7	78.5	111.1	99.0	102.0	M75	75 PX2K 5	3"	75 PX2K 300 5	3-1/2"	75 PX2K 350 5	3.05
90	75.3	500	76.2	90.4	128.6	114.0	120.0	M90	90 PX2K 5	3"	90 PX2K 300 5	3-1/2"	90 PX2K 350 5	5.00

*Entry thread seal not supplied, see accessories section.

(1) Number of cores (Max.)

Accessories: (Locknut, entry thread seal, serrated washer, earth tag and shroud - see accessories section)

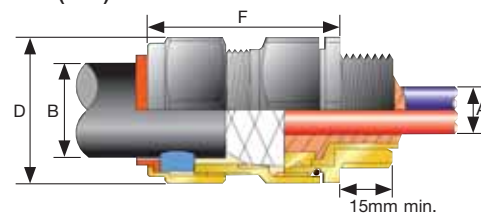
Compliances:

Hazardous Area	Gas	Dust
Certification Type	PX2K	
Zones	1-2, 21-22	
Conforming to 94/9/CE ATEX	Ⓢ II 2 GD	
Symbol of Protection ATEX	Ex d IIC, Ex e II,	Ex tD A21
Symbol of Protection IEC	Ex nR II	
T Rating	-	
Surface Temperature	N.A.	
Ambient Temperature	-60°C to +100°C	
CE Declaration of Conformity	DC07001	
ATEX Certificate	SIRA 06 ATEX 1097X	
IECEx Certificate	IECEx SIR 06.0044X	
Other Certifications	GOST, Lloyds, DNV, ABS	
Index of Protection (solid and liquid)	IP66 / IP68 (10 m)	

Standards:

Ex Standards	EN / IEC 60079-0; 60079-1; 60079-7; 60079-15; 61241-0; 61241-1
Product Standards	BS 6121, NF E 03 601 (conical thread); ISO 065/I/III (metric thread)
Other Standards	GOST

Dimensions (mm):

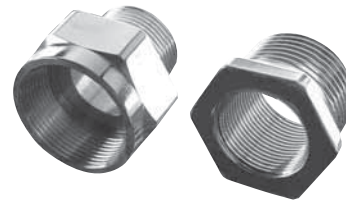


Cable Glands

757, BVE and 737 Series: Blanking Plugs, Adaptors and Reducers – Increased Safety and Flameproof



757 Series
Blanking Plugs



737 Series
Adaptors and Reducers



BVE Series Plastic Blanking
Plugs & Sealing Washers



Compliance Data:

757 Series Blanking Plugs:

Zone 1 & 2 – 21 & 22	ATEX	II 2 GD	IECEX	CE
Ex d IIC or Ex e II or Ex nR II	Ex tD A21	IP 66/68 (10 m)		

BVE Series Blanking Plugs:

Zone 1 & 2 – 21 & 22	ATEX	II 2 GD	IEC	CE
Ex e II	Ex tD A21	IP 66		

737 Series Adaptors and Reducers:

Zone 1 & 2 – 21 & 22	ATEX	II 2 GD	IECEX	CE
Ex d IIC or Ex e II or Ex nR II	Ex tD A21	IP 66/68 (10 m)		

Operating Temperature:

–60°C to +100°C (757 Series Blanking Plugs and 737 Series Adaptors and Reducers)
–40°C to +55°C (BVE Series Blanking Plugs)

CABLE GLANDS

Cable Glands

757, BVE and 737 Series: Blanking Plugs, Adaptors and Reducers – Increased Safety and Flameproof

Zone 1 & 2 – 21 & 22

⊕ II 2 GD

ATEX / IECEx

IP66/68 (with entry thread seal or O-ring supplied separately)

757 Series Blanking Plugs

Applications:

- A comprehensive range of blanking plugs designed to close any unused entries in electrical equipment. Care should be taken to ensure that a suitable entry thread sealing washer is also selected and installed, where applicable, to ensure that an effective seal is made at the entry, thereby maintaining the integrity of the enclosures or equipments IP rating.

Features:

- Catering to hazardous area applications, the range of products covers a number of different design types which are supplied in both metal and plastic (Exe only).
- Triple certification Ex d/Ex e/Ex nR.

Materials:

- Nickel plated brass.

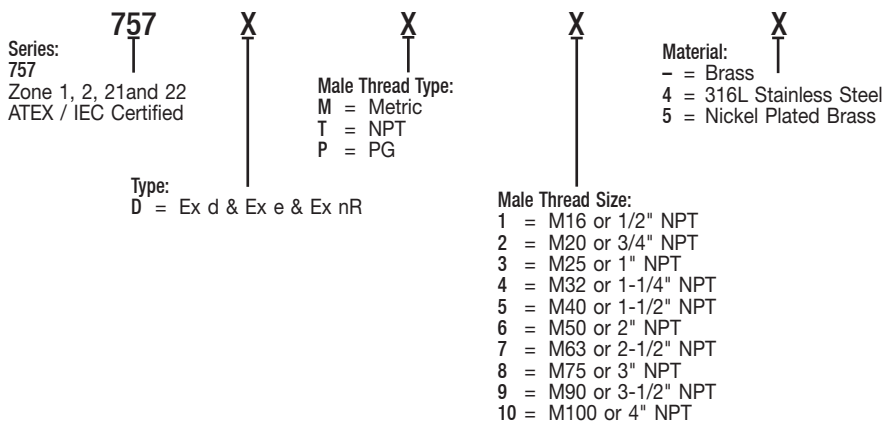
Options:

- Brass version: remove last digit 5.
- 316L stainless steel version: replace last digit 5 with 4.
- Plastic (see BVE series).



757 Series Blanking Plugs

Catalog Number Logic:



Ordering Information:

Dimensions (mm)			Catalog Numbers (Nickel Plated Brass)			Weight (Kg)	
Flats A	Corners B	C	Metric*		NPT		
24.0	26.0	5.0	M16 x 1.5	757DM15	1/2"	757DT15	0.05
24.0	26.0	5.0	M20 x 1.5	757DM25	3/4"	757DT25	0.07
30.0	33.0	5.0	M25 x 1.5	757DM35	1"	757DT35	0.10
36.0	40.0	5.0	M32 x 1.5	757DM45	1-1/4"	757DT45	0.16
46.0	51.0	6.0	M40 x 1.5	757DM55	1-1/2"	757DT55	0.32
55.0	61.0	6.0	M50 x 1.5	757DM65	2"	757DT65	0.42
70.0	78.0	6.0	M63 x 1.5	757DM75	2-1/2"	757DT75	0.63
80.0	89.0	6.0	M75 x 1.5	757DM85	3"	757DT85	0.98
95.0	106.0	6.0	M90 x 2	757DM95	3-1/2"	757DT95	1.35
110.0	123.0	6.0	M100 x 2	757DM105	4"	757DT105	1.60

* IP68 with entry thread seal or o-ring not supplied (See accessories section)

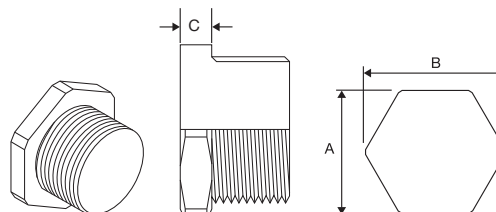
Compliances:

Hazardous Area	Gas	Dust
Certification Type	757	
Zones	1-2	21-22
Conforming to ATEX 94/9/CE	0518⊕II 2 G	0518⊕II 2 D
Symbol of Protection ATEX	Ex d IIC Ex e II	Ex tD A21
Symbol of Protection IEC	Ex nR II	
T rating	NA	
Surface Temperature	NA	
Ambient Temperature	-60°C to +100°C	
CE Declaration of Conformity	DC07001	
ATEX Certificate	SIRA 01 ATEX 1284U	
IEC Certificate	IECEX SIR 07.0056X	
Other Certifications	GOST, UL, CSA	
Index of Protection (solid and liquid)	IP66 or IP68 with seal	

Standards:

Ex Standards	EN / IEC 60079-0; 60079-1; 60079-7; 61241-0; 61241-1
Product Standards	-
Other Standards	EN / IEC 60529 (IP); EN 62262 (IK)

Dimensions (mm):



Thread Table:

	Metric	NPT	PG
1	M16	1/2"	PG9
2	M20	3/4"	PG11
3	M25	1"	PG13.5
4	M32	1-1/4"	PG16
5	M40	1-1/2"	PG21
6	M50	2"	PG29
7	M63	2-1/2"	PG36
8	M75	3"	PG42
9	M90	3-1/2"	PG48
10	M100	4"	-

Cable Glands

757, BVE and 737 Series: Blanking Plugs, Adaptors and Reducers – Increased Safety and Flameproof

Zone 1 & 2 – 21 & 22

⊕ II 2 GD

ATEX / IECEx

IP66

BVE Series Blanking Plugs

Applications:

- A comprehensive range of plastic blanking plugs designed to close any unused entries in electrical equipment.
- Entry thread sealing washer supplied.

Features:

- Catering to hazardous areas, the range covers all metric threads from M16 to M50.
- Certification Ex e.

Materials:

- Plastic.



BVE Series Plastic Blanking Plugs & Sealing Washer

Ordering Information:

Dimensions (mm) B	Metric	Weight (Kg)	Volume	Catalog Number
–	M16	0.1	0.03	095485
12	M20	0.1	0.03	095714
12	M25	0.1	0.03	095715
12	M32	0.1	0.03	095486
12	M40	0.1	0.07	095487
–	M50	0.2	0.07	095488

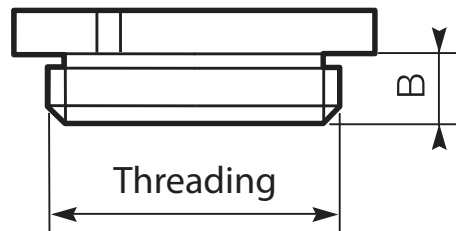
Compliances:

Hazardous Area	Gas	Dust
Certification Type	BVe	
Zones	1–2	21–22
Conforming to ATEX 94/9/CE	0081 ⊕ II 2 G	0081 ⊕ II 2 D
Symbol of Protection ATEX	Ex e II	Ex tD A21
Symbol of Protection IEC		
Ambient Temperature	–40°C to +55°C	
CE Declaration of Conformity	5C218	
ATEX Certificate	LCIE 03 ATEX 0011U	
IEC Certificate	LCIE Ex 03.005U	
Index of Protection (solid and liquid)	IP66	

Standards:

Ex Standards	EN / IEC 60079–0; 60079–1; 60079–7; 61241–0; 61241–1
Product Standards	/

Dimensions (mm):



Cable Glands

757, BVE and 737 Series: Blanking Plugs, Adaptors and Reducers – Increased Safety and Flameproof

Zone 1 & 2 – 21 & 22

II 2 GD

ATEX / IECEx

IP66/68 (with entry thread seal or O-ring supplied separately)

737 Series Adaptors & Reducers Applications:

- A wide range of thread conversion adaptors and reducers for hazardous area applications. Used to connect cable entry devices and equipment having dissimilar threads.
- Care should be taken to ensure that a suitable sealing gasket is also selected and installed, where applicable, to ensure that an effective seal is made at the entry, thereby maintaining the integrity of the enclosure or equipment IP rating.

Features:

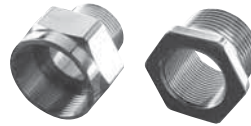
- Triple Certification Ex d/Ex e/Ex nR.

Materials:

- Nickel plated brass.

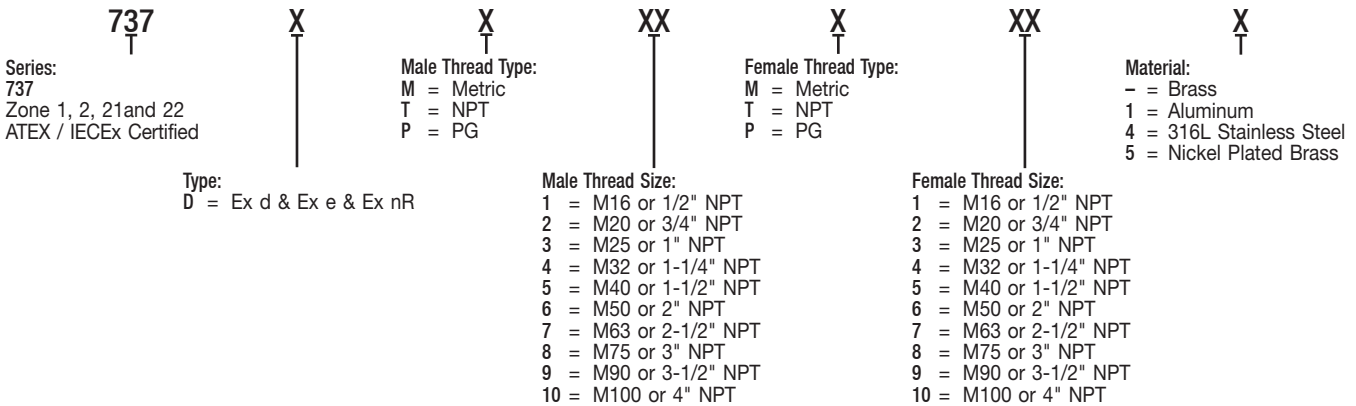
Options:

- Aluminum: replace last digit 5 with 1.
- Brass version: remove last digit 5.
- 316L stainless steel version: replace last digit 5 with 4.



737 Series Adaptors and Reducers

Catalog Number Logic:



Ordering Information:

Male Thread	Female Tapping																		
	M16*	M20*	M25*	M32*	M40*	M50*	M63*	M75*	1/2" NPT	3/4" NPT	1" NPT	1-1/4" NPT	1-1/2" NPT	2" NPT	2-1/2" NPT	3" NPT	3-1/2" NPT	4" NPT	
Sizes																			
M16*	█																		
M20*	█	█																	
M25*	█	█	█																
M32*	█	█	█	█															
M40*	█	█	█	█	█														
M50*	█	█	█	█	█	█													
M63*	█	█	█	█	█	█	█												
M75*	█	█	█	█	█	█	█	█											
1/2" NPT	█	█	█	█	█	█	█	█	█										
3/4" NPT	█	█	█	█	█	█	█	█	█	█									
1" NPT	█	█	█	█	█	█	█	█	█	█	█								
1-1/4" NPT	█	█	█	█	█	█	█	█	█	█	█	█							
1-1/2" NPT	█	█	█	█	█	█	█	█	█	█	█	█	█						
2" NPT	█	█	█	█	█	█	█	█	█	█	█	█	█	█					
2-1/2" NPT	█	█	█	█	█	█	█	█	█	█	█	█	█	█	█				
3" NPT	█	█	█	█	█	█	█	█	█	█	█	█	█	█	█	█			
3-1/2" NPT	█	█	█	█	█	█	█	█	█	█	█	█	█	█	█	█	█		
4" NPT	█	█	█	█	█	█	█	█	█	█	█	█	█	█	█	█	█	█	

█ Ex d/Ex e reducer █ Ex d/Ex e adaptor □ Non-certified adaptor

Thread Table:

	Metric*	NPT	PG
1	M16	1/2"	PG9
2	M20	3/4"	PG11
3	M25	1"	PG13.5
4	M32	1-1/4"	PG16
5	M40	1-1/2"	PG21
6	M50	2"	PG29
7	M63	2-1/2"	PG36
8	M75	3"	PG42
9	M90	3-1/2"	PG48
10	M100	4"	-

* IP68 with entry thread seal or O-ring (not supplied)
(See accessories section)

CABLE GLANDS

Cable Glands

757, BVE and 737 Series: Blanking Plugs, Adaptors and Reducers – Increased Safety and Flameproof

Zone 1 & 2 – 21 & 22

Ex II 2 GD

ATEX / IECEx

IP66/68 (with entry thread seal or O-ring supplied separately)

Reducers (Nickel Plated Brass)

Male Thread	Female Thread	Catalog Number
M20	M16	737DM2M15
M25	M16	737DM3M15
M25	M20	737DM3M25
M32	M20	737DM4M25
M32	M25	737DM4M35
M40	M25	737DM5M35
M40	M32	737DM5M45
M50	M32	737DM6M45
M50	M40	737DM6M55
M63	M40	737DM7M55
M63	M50	737DM7M65
M75	M50	737DM8M65
M75	M63	737DM8M75
3/4"	1/2"	737DT2T15
1"	1/2"	737DT3T15
1"	3/4"	737DT3T25
1-1/4"	3/4"	737DT4T25
1-1/4"	1"	737DT4T35
1-1/2"	1"	737DT5T35
1-1/2"	1-1/4"	737DT5T45
2"	1-1/4"	737DT6T45
2"	1-1/2"	737DT6T55
2-1/2"	1-1/2"	737DT7T55
2-1/2"	2"	737DT7T65
3"	2"	737DT8T65
3"	2-1/2"	737DT8T75
3-1/2"	2-1/2"	737DT9T75
3-1/2"	3"	737DT9T85
4"	3"	737DT10T85
4"	3-1/2"	737DT10T95

Adaptors (Nickel Plated Brass)

Male Thread	Female Thread	Catalog Number
M16	M20	737DM1M25
M20	M25	737DM2M35
M25	M32	737DM3M45
M32	M40	737DM4M55
M40	M50	737DM5M65
M50	M63	737DM6M75
M63	M75	737DM7M85
M75	M90	737DM8M95
M90	M100	737DM9M105
M16	1/2"	737DM1T15
M20	1/2"	737DM2T15
M20	3/4"	737DM2T25
M25	3/4"	737DM3T25
M25	1"	737DM3T35
M32	1"	737DM4T35
M32	1-1/4"	737DM4T45
M40	1-1/4"	737DM5T45
M40	1-1/2"	737DM5T55
M50	1-1/2"	737DM6T55
M50	2"	737DM6T65
M63	2"	737DM7T65
M63	2-1/2"	737DM7T75
M75	2-1/2"	737DM8T75
M75	3"	737DM8T85
1/2"	M20	737DT1M25
3/4"	M20	737DT2M25
3/4"	M25	737DT2M35
1"	M25	737DT3M35
1"	M32	737DT3M45
1-1/4"	M32	737DT4M45
1-1/4"	M40	737DT4M55
1-1/2"	M40	737DT5M55
1-1/2"	M50	737DT5M65
2"	M50	737DT6M65
2"	M63	737DT6M75
2-1/2"	M63	737DT7M75
2-1/2"	M75	737DT7M85
3"	M75	737DT8M85

Compliances:

Hazardous Area	Gas	Dust
Certification Type	737	
Zones	1–2	21–22
Conforming to ATEX 94/9/CE	0518 Ex II 2 G	0518 Ex II 2 D
Symbol of Protection ATEX	Ex d IIC	
Symbol of Protection IECEx	Ex e II	Ex tD A21
T Rating	N.A.	
Surface Temperature	N.A.	
Ambient Temperature	–60°C to +100°C	
CE Declaration of Conformity	DC07001	
ATEX Certificate	SIRA 01 ATEX 1284U	
IECEx Certificate	IECEx SIR 07.0052X	
Other Certifications	GOST, UL, CSA	
Index of Protection (solid and liquid)	IP66 or IP68 with seal	
Impact Resistance (shock)	–	

Standards:

Ex Standards	EN / IEC 60079–0; 60079–1; 60079–7; 61241–0; 61241–1
Product Standards	–
Other Standards	GOST, UL and CSA

Cable Glands

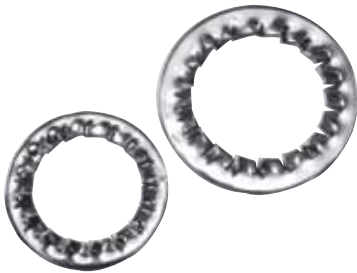
Accessories for Cable Entries



Nickel Plated
Brass Locknuts



Brass
Earth Tag



316L Stainless Steel
Serrated Washers



Entry Thread Seals



Clamp for Lead Sheath
Armored Cable Glands



PVC Shrouds

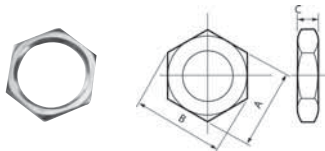


Cable Glands

Accessories for Cable Entries

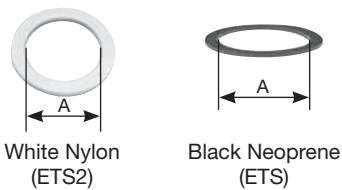
Accessories:

Nickel Plated Brass Locknuts



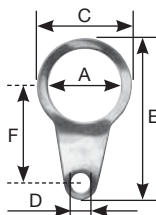
Thread	A	Dimensions (mm) B	C	Weight (Kg)	Catalog Number	Pack
M16 x 1.5	19	21	3	0.004	0957 07	10
M20 x 1.5	24	26.5	3.5	0.006	0957 01	10
M25 x 1.5	33	36.5	3.5	0.010	0957 02	10
M32 x 1.5	42	46.5	4.5	0.010	0957 03	10
M40 x 1.5	55	60	4.5	0.023	0957 08	5
M50 x 1.5	65	70.1	5.5	0.028	0957 09	5
M63 x 1.5	70	77	6	0.073	0957 10	5
M75 x 1.5	85	93.5	8	0.112	0957 11	1
M90 x 2	100	110	10	0.171	0957 12	1
M100 x 2	110	121	12	0.252	0957 13	1

Entry Thread Seal



Thread A	Weight (Kg)	Nylon Catalog Number	Weight (Kg)	Neoprene Catalog Number	Pack
M16	0.0006	16ETS2	0.0001	16ETS	10
M20	0.0010	20ETS2	0.0002	20ETS	10
M25	0.0018	25ETS2	0.0004	25ETS	10
M32	0.0020	32ETS2	0.0005	32ETS	10
M40	0.0034	40ETS2	0.0008	40ETS	5
M50	0.0036	50ETS2	0.0009	50ETS	5
M63	0.0040	63ETS2	—	—	5
M75	0.0060	75ETS2	—	—	1
M90	0.0120	90ETS2	—	—	1
M100	0.0350	100ETS2	—	—	1

Brass Earth Tag

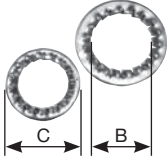



Thread A	C	Dimensions (mm) D	E	F	Weight (Kg)	Catalog Number	Pack
M16	25.4	M6	49.3	30.2	0.008	16ET	5
M20	27.1	M6	53.4	33.1	0.008	20ET	5
M25	35.1	M6	59.4	35.6	0.010	25ET	5
M32	45.2	M12	77.0	43.1	0.018	32ET	5
M40	53.7	M13	88.7	45.4	0.024	40ET	1
M50	65.2	M13	111.1	58.1	0.036	50ET	1
M63	82.6	M13	128.6	66.8	0.048	63ET	1
M75	95.4	M13	141.1	73.0	0.052	75ET	1
M90	114.2	M13	161.0	85.0	0.062	90ET	1
M100	126.0	M13	194.0	118.0	0.106	100ET	1


Cable Glands

Accessories for Cable Entries

Accessories – Continued:

	Thread	Dimensions (mm)		Weight (Kg)	Catalog Number
		B	C		
316L Stainless Steel Serrated Washers 	M16	19	25.4	0.006	16SW4
	M20	24	32.0	0.006	20SW4
	M25	33	40.0	0.008	25SW4
	M32	42	44.0	0.008	32SW4
	M40	55	59.0	0.022	40SW4
	M50	65	80.0	0.024	50SW4
	M63	70	100.0	0.060	63SW4
	M75	85	112.0	0.085	75SW4
	M90	100	120.0	0.110	90SW4
	M100	110	150.0	0.160	100SW4

	Cable Gland Size	Catalog Number
Lead Star Clamp for E2FX and E2FW Cable Glands Lead Sheath Continuity 	2016	2016LSW
	20S	20SLSW
	20	20LSW
	25S & 25	25LSW
	32	32LSW
	40	40LSW
	50S	50SLSW
	50	50LSW
	63S	63SLSW
	63	63LSW
	75S	75SLSW
	75	75LSW
	90	90LSW
100	100LSW	

	Cable Gland Sizes	E1FW – E2FW E1FX – E2FX T3	A2F	PX	
				PX	PX2K
Black PVC Shrouds 	20/16	PVC02	PVC02	PVC02	PVC06
	20S	PVC04	PVC04	PVC04	PVC06
	20	PVC06	PVC05	PVC05	PVC06
	25S	PVC09	N.A.	N.A.	N.A.
	25	PVC09	PVC09	PVC09	PVC09
	32	PVC11	PVC10	PVC10	PVC11
	40	PVC15	PVC13	PVC13	PVC15
	50S	PVC18	PVC14	PVC15	PVC18
	50	PVC21	PVC17	PVC18	PVC21
	63S	PVC23	PVC20	PVC21	PVC23
	63	PVC25	PVC22	PVC23	PVC25
	75S	PVC28	PVC24	PVC24	PVC28
	75	PVC30	PVC26	PVC26	PVC30
	90	PVC32	PVC31	PVC31	PVC32
	100	150-50HST	150-50HST	N.A.	N.A.

Cable Glands

DB Series: Drain, Breather Valves and Unions



093498
Bleed Valve



093486
Combination Drain
and Breather

Compliance Data:

ATEX

Zone 1 & 2 – 21 & 22	ATEX	II 2 GD		
Ex e II	IP 66			

CEC – NEC

Class 1	Zone 1	NEMA 4X		
---------	--------	---------	--	--

Operating Temperature:

-50°C to + 85°C				



CABLE GLANDS

Cable Glands

DB Series: Drain and Breather Valves

Zone 1 & 2 – 21 & 22

⊕ II 2 GD Ex e II

IP66

Applications

Flameproof Bleed Valve:

- Used to drain condensation from inside enclosures and boxes.

Increased Safety Breather Drain:

- Ensures that the condensation is evacuated from the lower section of the enclosures and limits the "pumping" effect in the

upper section.

Standard Materials

- Bleed valve: Nickel plated brass.
- Breather/Drain: Polyamide, brass or stainless steel.

Catalog Number Logic:

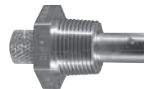
DB
↓
Series:
DB = DB Series
Zone 1, 2, 21 and 22
ATEX

X
↓
Rating:
D = Ex d
E = Ex e

XX
↓
Size:
20 = M20

XX
↓
Material:
P = Polyamide
B = Brass
S = Stainless Steel
NB = Nickel plated brass

Ordering Information:



Flameproof Bleed Valve

Metric Thread	Material	Weight (Kg)	Volume (dm ³)	Catalog Number	Old Catalog Number	Pack
M20	Nickel plated brass	0.1	0.6	DBD20NB	093498	1

To be used only with our range of flameproof enclosure. The ATEX certification is included in our Exd enclosure's certification.



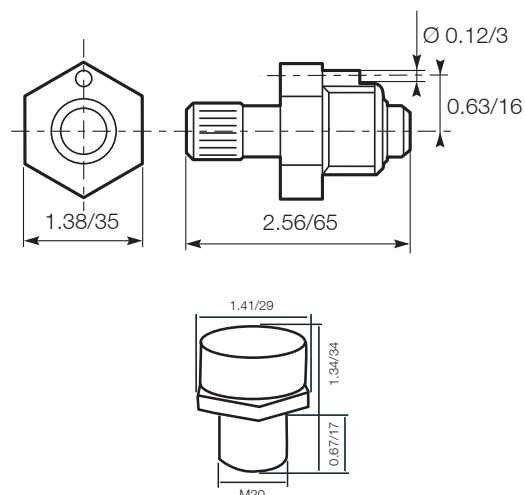
Increased Safety Combination Drain and Breather

Metric Thread	Material	Weight (Kg)	Volume (dm ³)	Catalog Number	Old Catalog Number	Pack
M20	Polyamide	0.2	0.6	DBE20P	093486	1
M20	Brass	0.2	0.6	DBE20B	093487	1
M20	Stainless steel	0.2	0.6	DBE20S	093488	1

Compliances:

Hazardous Area	Gas	Dust
Certification Type	DP - E	
Zones	1-2	21-22
Conforming to ATEX	0518Ⓜ II 2 G	0518Ⓜ II 2 D
Symbol of Protection ATEX	Ex e II	-
Service Temperature	-50°C to + 85°C	
Declaration of Conformity	5C225	
ATEX Certificate	SIRA 99 ATEX 3050U	
Other Certifications	GOST – CSA	
Index of Protection	IP66 – NEMA 4X	
Impact Resistance (shock)	-	

Dimensions



Cable Glands

DB Series: Fire Retardant Seal and IIC Elbows



500147
3/4" Fire Retardant Seal



500054
Female/Female Elbow

Compliance Data:

ATEX



Zone 1 & 2 - 21 & 22	ATEX	II 2 GD		
Ex d IIC	Ex tD A21	1P66/67		

Operating Temperature

-20°C to +80°C (For Fire Retardant Unions)	-55°C to +150°C (For Elbows)	
--	------------------------------	--

CABLE GLANDS

Cable Glands

DB Series: Fire Retardant Seal and IIC Elbows

Zone 1 & 2 - 21 & 22

Ex II 2 GD

Ex d IIC

Applications: Fire Retardant Seal

- Used to prevent passage of gasses, vapors or flames from one portion of a conduit system to another.

Standard Materials

- Aluminum

Applications: IIC Elbows

- Used to connect two lengths of conduits.

Standard Materials

- Aluminum.

Aluminum Fire-Retardant Seal

Female/Female

Tapered Thread (NPT)	Dimensions				Weight (Kg)	Volume (dm ³)	Catalog Number	Pack
	A	B	B1	R				
1/2"	77	57	-	43	0.13	2.3	500146	1
3/4"	87	67	-	50	0.19	3.2	500147	1
1"	105	83	-	62	0.32	3.2	500148	1
1-1/4"	130	84	-	56	0.6	3.2	500149	1
1-1/2"	130	84	-	56	0.6	4	500150	1
2"	140	95	-	63	0.65	7.6	500151	1
2-1/2"	175	113	-	74	1.26	7.6	500152	1
3"	190	-	135	92	1.33	7.6	500153	1



500147

Fire Retardant Resin

Description	Weight (Kg)	Volume (dm ³)	Catalog Number	Pack
1 Kg pot + 250 g of catalyst	1.5	3.2	500154	1
Fire retardant fiber (1 Kg bog)	1.5	8	500155	1

Aluminum Elbows

Female/Female

Tapered Thread (NPT)	Weight (Kg)	Volume (dm ³)	Catalog Number	Pack
1/2"	0.125	0.12	500054	1
3/4"	0.1	0.12	500055	1
1"	0.2	0.23	500056	1
1-1/4"	0.4	0.5	500057	1
1-1/2"	0.6	0.5	500058	1
3"	0.5	2	500059	1



500054

Fire Retardant Unions

Compliances:

Hazardous Area	Gas	Dust
Certification Type	EYS	
Zones	1-2	21-22
Conforming to ATEX	0722 Ex ^o II 2 G	0722 ^o II 2 D
Symbol of Protection ATEX	Ex d IIC	Ex ID A21
Service Temperature	-20°C to + 80°C	
Declaration of Conformity	50268	
ATEX Certificate	CESI 03 ATEX 085	
Other Certifications	-	
Index of Protection	IP66	
Impact Resistance (shock)	-	

Standards:

Ex Standards	EN 60079-0; 60079-1; 61241-0; 61241-1
Product Standards	-
EMC Standards	-
Other Standards	EN 60529 (IP)

IIC Elbows

Compliances:

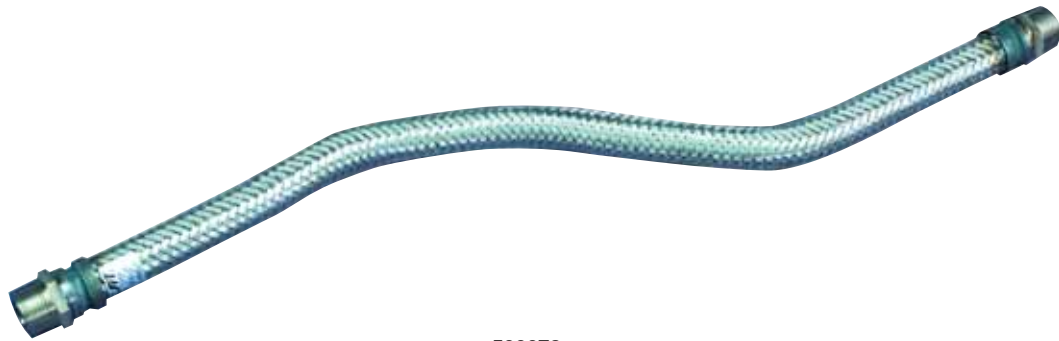
Hazardous Area	Gas	Dust
Certification Type	ELF	
Zones	1-2	21-22
Conforming to ATEX	0722 Ex ^o II 2 G	0722 ^o II 2 D
Symbol of Protection ATEX	Ex d IIC	Ex ID A21
Service Temperature	-55°C to + 150°C	
Declaration of Conformity	5C223	
ATEX Certificate	CESI 01 ATEX 104U	
Other Certifications	-	
Index of Protection	IP66/67	
Impact Resistance (shock)	-	

Standards:

Ex Standards	EN 60079-1; 60079-1; 61241-0; 61241-1
Product Standards	-
EMC Standards	-
Other Standards	EN 60529 (IP)

Cable Glands

DB Series: IIC Flexible Couplings



500073
Male/Male Flexible Coupling

Compliance Data:



ATEX:

Zone 1 & 2 - 21 & 22	ATEX	II 2 GD		
Ex d IIC	Ex tD A21	IP66/67		

Operating Temperature:

-20 C to + 150 C				

CABLE GLANDS

Cable Glands

DB Series: IIC Flexible Couplings

Zone 1 & 2 - 21 & 22

⊕ II 2 GD Ex d IIC

IP 66/67

Applications

- Used in areas where vibration and/or movement are a problem.
- Also used in place of rigid conduit in difficult-bend situations.

Standard Materials

- Stainless steel

Ordering Information:

Flexible Couplings - Male/Male

To be used with fire-retardant seals or unions.



500073

Tapered Thread (NPT)	Length (mm)	Weight (Kg)	Volume (dm³)	Catalog Number	Pack
1/2"	100	0.65	1	500060	1
1/2"	170	0.7	1.75	500061	1
1/2"	250	0.7	2.5	500106	1
1/2"	300	0.75	3	500062	1
1/2"	400	0.8	4	500063	1
1/2"	500	0.85	5	500064	1
1/2"	600	0.9	6	500065	1
1/2"	700	0.95	7	500066	1
1/2"	800	1	8	500067	1
1/2"	900	1.05	9	500068	1
1/2"	1000	1.1	10	500069	1
3/4"	300	0.75	3	500070	1
3/4"	400	0.8	3	500071	1
3/4"	500	0.85	5	500072	1
3/4"	600	0.9	6	500073	1
3/4"	700	0.95	7	500074	1
3/4"	800	1	8	500075	1
3/4"	900	1.05	9	500076	1
3/4"	1000	1.1	10	500077	1
1"	300	0.75	3	500078	1
1"	400	0.8	4	500079	1
1"	500	0.85	5	500080	1
1"	600	0.9	6	500081	1
1"	700	0.95	7	500082	1
1"	800	1	8	500083	1
1"	900	1.05	9	500084	1
1"	1000	1.1	10	500085	1
1-1/4"	300	0.75	3	500086	1
1-1/4"	400	0.8	3	500087	1
1-1/4"	500	0.85	5	500088	1
1-1/4"	600	0.9	6	500089	1
1-1/4"	700	0.95	7	500090	1
1-1/4"	800	1	8	500091	1
1-1/4"	900	1.05	9	500092	1
1-1/4"	1000	1.1	10	500093	1
1-1/2"	300	0.75	3	500094	1
1-1/2"	400	0.8	4	500095	1
1-1/2"	500	0.85	5	500096	1
1-1/2"	600	0.9	6	500097	1
1-1/2"	700	0.95	7	500098	1

Compliances:

Hazardous Area	Gas	Dust
Certification Type	SPH	
Zones	1-2	21-22
Conforming to ATEX	0722 Ex⊕II 2 G	0722⊕II 2 D
Symbol of Protection ATEX	Ex d IIC	Ex tD A21
Service Temperature	-20°C to + 150°C	
Declaration of Conformity	5C226	
ATEX Certificate	CESI 00 ATEX 048U	
Other Certifications	-	
Index of Protection	IP66/67	
Impact Resistance (shock)	-	

Standards:

Ex Standards	EN 60079-0; 60079-1; 61241-0; 61241-1
Product Standards	EN ISO 10807
EMC Standards	-
Other Standards	EN 60529 (IP)

Cable Glands

DB Series: IIB Unions – Flameproof



500044
Male/Female Zinc Plated



500049
Female/Female Zinc Plated

Compliance Data:

ATEX



Zone 1 & 2 - 21 & 22	ATEX	II 2 GD		
Ex d IIB	Ex tD A21	IP 66/67		

Operating Temperature

-20°C to +60°C				

CABLE GLANDS

Cable Glands

DB Series: IIB Unions – Flameproof

Zone 1 & 2 - 21 & 22

II 2 GD Ex d IIB

IP 66/67

Applications

- To be used with a fire retardant seal fitted directly at the entry to the flameproof housing. Enables connection via rigid or flexible union.

Standard Materials

- Nickel plated steel.

Ordering Information:

Nickel Plated Steel Unions

Male/Female

3-piece flameproof union.



500044

Tapered Thread (NPT)	Weight (Kg)	Volume (dm³)	Catalog Number	Pack
1/2"	0.17	0.12	500044	1
3/4"	0.19	0.12	500045	1
1"	0.3	0.23	500046	1
1-1/4"	0.8	0.5	500047	1
1-1/2"	1	0.5	500048	1



500049

Female/Female

Tapered Thread (NPT)	Weight (Kg)	Volume (dm³)	Catalog Number	Pack
1/2"	0.15	0.12	500049	1
3/4"	0.15	0.12	500050	1
1"	0.23	0.23	500051	1
1-1/4"	0.7	0.5	500052	1
1-1/2"	0.37	0.5	500053	1
3"	0.9	2	500158	1

Compliances:

Hazardous Area	Gas	Dust
Certification Type	BMF - BFF	
Zones	1-2	21-22
Conforming to ATEX	0722 Ex d IIB	0722 Ex tD A21
Symbol of Protection ATEX	Ex d IIB	Ex tD A21
Service Temperature	-20°C to + 60°C	
Declaration of Conformity	5C232	
ATEX Certificate	CESI 99 ATEX 034U	
Other Certifications	-	
Index of Protection	IP66/67	
Impact Resistance (shock)	-	

Standards:

Ex Standards	EN 60079-0; 60079-1; 61241-0; 61241-1
Product Standards	-
EMC Standards	-
Other Standards	EN 60529 (IP)

Notes:
