



FIBER

Achieving a 10GbE cost-effective solution was a challenge for the fiber industry, because expensive lasers were required to get maximum bandwidth. The introduction of the 850nm VCSEL lasers, combined with laser-optimized 50 μ m multimode fiber provided the most economical solution.



Plug-n-Play Cassettes and Cables

Optical cassettes are adapter panels installed with factory terminated MTP multifiber fanouts. The cassettes can be snapped into most Hubbell fiber patch panels, enclosures or cabinets that accept FSP series adapter panels**.

These cassettes provide significant installation labor savings because connector termination is not required in the field. The fanouts are housed in a durable metal cassette and are terminated at the rear to a 12-fiber MTP ribbon connector (two 12-fiber MTP connectors for the 24-fiber LC cassette). Factory assembled MTP to MTP ribbon cables are also available, with a pulling grip attached at one end, for easy pulls through conduit and innerduct.

** Cassettes will not fit into the FTU2SP, FTU4SP or FCR350SP54R cabinets and enclosures.

Features/Benefits

- Factory-terminated multimode and singlemode 12-fiber fanouts.
- SC, ST-style, LC and MT-RJ versions available.
- 12-Fiber MTP building cables with pulling grip attached.
- 100% optically tested for reliable performance.
- Compact housings for space savings in patch panels.

Specifications

- ◆ Product meets the requirements of TIA/EIA-568-B.3.
- ◆ Dimensions: 5.1"H x 1.1"W x 2.75"D.
- ◆ Housing: epoxy powder paint 16 ga. CRS.
- ◆ MM insertion loss: < 1.5 dB*.
- ◆ SM insertion loss: < 1.1 dB*.
- ◆ SM return loss: < 50dB*.
- ◆ Operating/storage temp: 0°C to 60°C.
- ◆ Max. MTP cord pulling tension: 49.5 lbs.

*Note losses include the combined losses of the MTP and adapter panel connectors.

MTP 12-Fiber Cassette



Connector Type	Fiber Type	Catalog No.
SC Duplex	50µm	OCSC50
SC Duplex	50µm, 10GbE	OCSC50G ✓10G
SC Duplex	62.5µm	OCSC62
SC Duplex	SM	OCSCSM
ST-style	50µm	OCST50
ST-style	62.5µm	OCST62
ST-style	SM	OCSTSM
LC Duplex	50µm	OCLC50
LC Duplex	50µm, 10GbE	OCLC50G ✓10G
LC Duplex	62.5µm	OCLC62
LC Duplex	SM	OCLCSM
LC Quad 24F	50µm	OCLCQ50*
LC Quad 24F	50µm, 10GbE	OCLCQ50G* ✓10G
LC Quad 24F	62.5µm	OCLCQ62*
LC Quad 24F	SM	OCLCQSM*
MT-RJ	50µm	OCRJ50
MT-RJ	62.5µm	OCRJ62

* 24 fibers, 2-12 fiber MTP connectors in rear.

MTP to MTP 12-Fiber Cords with Pulling Grip - OFNP-rated (Plenum)



Fiber Type	Length	Catalog No.
50µm	10m	FPCMT5010
50µm, 10GbE	10m	FPCMT50G10 ✓10G
62.5µm	10m	FPCMT6210
SM	10m	FPCMT510
50µm	25m	FPCMT5025
50µm, 10GbE	25m	FPCMT50G25 ✓10G
62.5µm	25m	FPCMT6225
SM	25m	FPCMT525
50µm	50m	FPCMT5050
50µm, 10GbE	50m	FPCMT50G50 ✓10G
62.5µm	50m	FPCMT6250
SM	50m	FPCMT550
50µm	100m	FPCMT50100
50µm, 10GbE	100m	FPCMT50G100
62.5µm	100m	FPCMT62100
SM	100m	FPCMT5100

Custom lengths available. See page F16 for additional Multifiber MTP Cable Assemblies.



HUBBELL OptiChannel Rack Mount Enclosures



- Patented "gasket-less" internal routing knock-outs.
- Mounting stud accepts splice trays or FSP adapter brackets.*
- Fits 19" or 23" racks - capable of flush or center mounting in a rack or cabinet.
- Fiber's higher traffic carrying capacity per volume reduces cabling and improves airflow.

Features/Benefits

- Quick release latches on front cover/tray.
- Front pull-out shelf.
- Removable top front cover.
- Patch cord tie-down features.
- Tinted, removable Plexiglas cover.

Specifications

- ◆ High quality, 16 ga. Cold Rolled Steel construction.
- ◆ Durable black powder coat finish.
- ◆ Approximate unloaded shipping weight: FCR350: 11 lbs., FCR525: 15 lbs., FCR700: 17 lbs.
- ◆ Dimensions: 17"W x 11"D.
- ◆ The FCR series enclosure accepts a maximum of two 10" splice trays - for additional splice capacity, use the FSS01 or FCR350SE.

* See page F7 for FSP adapter brackets and splice trays.

U.S. Patent #6498293.

FCR Rack Mount Enclosures



FCR525SPR

The **OPTICHANNEL™** FCR rack mount enclosures provide patching and fiber slack storage capability. FCR rack mount enclosures accept all FSP adapter panels (see page F10) and MTP cassettes. The "technician's side" has facilities for securing the cable, storing fiber slack and arranging and identifying the terminated fibers. The "user's side" has similar features for the management of fiber optic patch cords. A splice tray stud also accepts FSP adapter brackets (see page F7).

Delivery:	1 Cabinet	1 Top front cover
	1 Rear door	1 Front door (Plexiglas)
	2 Mounting brackets	1 Cable management tray
	6 Cable ties	4 Cable clips, adhesive
	5 Cable clips, snap in	2 VELCRO® cable ties
	4 #12-24 rack mount screws	3 Label holders
	1 Grid label, adhesive	Splice tray spacers
		2 Cable management spools

Accepts	Height	Rack Units	Catalog No.
6 FSP series adapter panels	3.50" (89)	2	FCR350SP36R
9 FSP series adapter panels	3.50" (89)	2	FCR350SP54R*
12 FSP series adapter panels	5.25" (133)	3	FCR525SPR
15 FSP series adapter panels	7.00" (178)	4	FCR700SP

* Does not accept MTP cassettes.

VELCRO® is a trademark of Velcro Industries B.V.

HUBBELL
OptiChannel Hinged Rack Mount Panels



FPR - Hinged Rack Mount Panels



FPR3SP loaded with FSPST6, FSPSCD3 and FSPSCD03 adapter panels.

Features/Benefits

- Pre-punched or FSP Adapter Panel versions available.
- Hinged swing-out fiber drawer for easy access to cables and connectors.
- Occupies 1 rack unit.
- Adjustable rack mount brackets for 19" or 23" racks.
- Splice tray mounting stud accepts 2 fiber splice trays (7" or 10").

Specifications

- ◆ High quality, 16 ga. Cold Rolled Steel construction.
- ◆ Durable black powder coat finish.
- ◆ Shipping weight: 10 lbs. unloaded.
- ◆ Dimensions: 17"W x 11"D x 1.75"H.



FPR012STM



FPR024SCM



FPRBRKT1

FPR - Pre-punched Version

# Fibers	# Adapters	Format	Catalog No.
12	12	ST-style adapters, Phosphor Bronze, loaded	FPR012STM
24	24	ST-style adapters, Phosphor Bronze, loaded	FPR024STM
12	12	ST-style adapters (not included)	FPR012STX
24	24	ST-style adapters (not included)	FPR024STX
12	6	SC Duplex adapters, Phosphor Bronze, loaded	FPR012SCM
24	12	SC Duplex adapters, Phosphor Bronze, loaded	FPR024SCM
12	6	SC Duplex adapters (not included)	FPR012SCX
24	12	SC Duplex adapters (not included)	FPR024SCX

FPR - FSP Adapter Panel Version

Capacity	Format	Catalog No.
3	FSP series adapter panels* (not included)	FPR3SP

* For FSP adapter panels, see page F10.

Cable Management Bracket (Fits all FPR series panels)

Description	Catalog No.
Protective bracket/cable management bar	FPRBRKT1

FEUR Fiber Interconnection Shelf



FEUR12SCM



FEUR24STM

Features/Benefits

- Cable management components included.
- Slide-out tray.
- Occupies 1 rack unit.
- Flush or extended 19" or 23" rack mounting.

Specifications

- ◆ 12- or 24-port standard multimode interconnection capacity.
- ◆ Material: High quality 1.2mm Cold Rolled Steel.
- ◆ Durable, black electrostatically applied powder coat finish.
- ◆ Weight: 2.75 kg. fully loaded.
- ◆ Dimensions: 1.75"H x 17"W x 8.6"D (4.5 x 43 x 22cm).

FEUR Fiber Interconnection Shelf

Base units supplied complete with 2 cable management clips and 1 cable strain relief connector.

Description - Basic Unit including:	Catalog No.
Blanks only	FEUR
3 LC Quad MM adapters (loaded)	FEUR12LCM
6 LC Quad MM adapters (loaded)	FEUR24LCM
12 LC Quad MM adapters (loaded)	FEUR48LCM
12 ST-style MM adapters (loaded)	FEUR12STM
24 ST-style MM adapters (loaded)	FEUR24STM
6 SC Duplex MM adapters (loaded)	FEUR12SCM
12 SC Duplex MM adapters (loaded)	FEUR24SCM
3 FSP adapter panel cut-outs	FEURSP



HUBBELL OptiChannel Fiber Interconnection Trays

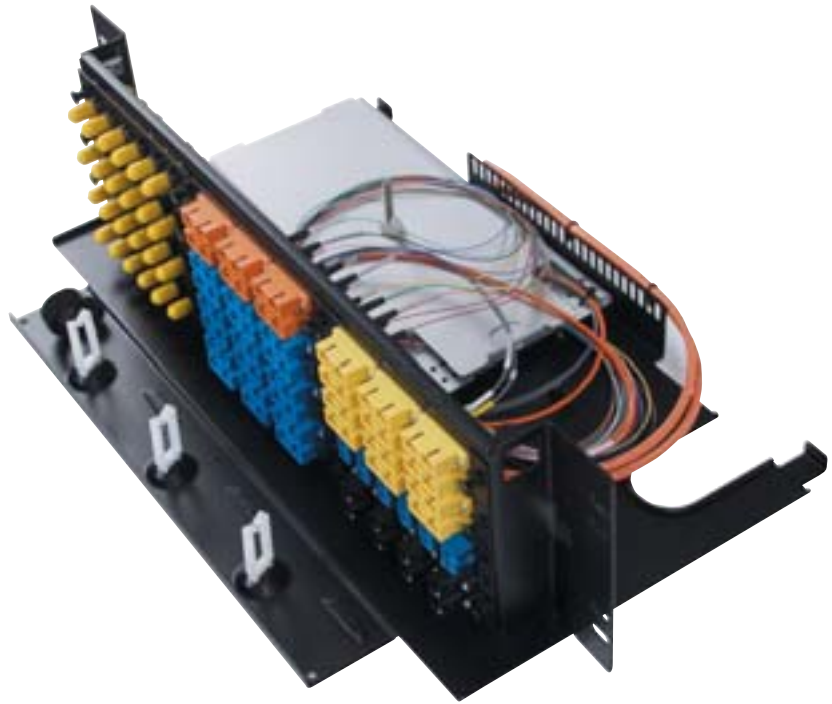
An economical alternative for managing fiber terminations and splice trays in protected areas. Fiber Interconnection Trays provide vertical cable feed-throughs allowing the stacking of multiple panels (available unloaded only). The open tray design reduces cost and facilitates maintenance.

Features/Benefits

- Available 1, 2, 3, or 4 rack units.
- Accepts all Hubbell splice trays.
- Optional front and rear "smoked" Plexiglas covers available.
- Accepts Plug & Play cassettes.

Specifications

- ◆ 16 ga. Cold Rolled Steel construction.
- ◆ Durable black powder coat finish.
- ◆ Shipping weight: 10 lbs. unloaded.
- ◆ Center mounting only in 19" rack or cabinet.



FTR525SP shown loaded with FSP series adapter panels and splice trays.

FTR - Interconnection Tray

FTR Tray - FSP Adapter Panel Version

Front and rear covers not included.

Capacity	Rack Units	Catalog No.
3 FSP adapter panels	1	FTR175SP
6 FSP adapter panels	2	FTR350SP36
12 FSP adapter panels	3	FTR525SP
15 FSP adapter panels	4	FTR700SP

Front Covers for FTR Trays

Description	Rack Units	Catalog No.
FTR Front Cover	1	FTR175FCVR
FTR Front Cover	2	FTR350FCVR
FTR Front Cover	3	FTR525FCVR
FTR Front Cover	4	FTR700FCVR

Rear Covers for FTR Trays

Description	Rack Units	Catalog No.
FTR Rear Cover	1	FTR175RCVR
FTR Rear Cover	2	FTR350RCVR
FTR Rear Cover	3	FTR525RCVR
FTR Rear Cover	4	FTR700RCVR



FTR350SP36 (shown with front and rear cover)



FTR350FCVR



FTR525RCVR

HUBBELL OptiChannel Splicing Products



- Patented “gasket-less” internal routing knock-outs.
- Slide-out fiber drawer for easy access to cables/connectors.
- Capable of flush or center mounting in a rack or cabinet.
- Fiber's higher traffic carrying capacity per volume reduces cabling and improves airflow.

Features/Benefits

- Adjustable rack mount brackets for 19" or 23" racks.
- Cable management hardware included.
- FCR350SE accepts up to 6 splice trays.
- FSS01 splice tray mounting stud accepts up to 2 fiber splice trays.
- FSS01 occupies 1 rack unit.

Specifications

- ◆ 16 ga. Cold Rolled Steel construction.
- ◆ Durable black powder coat finish.
- ◆ Splice trays are anodized aluminum per MIL Spec. A-8625-C.
- ◆ U.S. Patent #6498293.



FCR350SE splice enclosure shown with splice trays installed on the building cable (front cover removed and tray extended). Splice trays sold separately.

Splicing Products



FCR350SE

FCR Fiber Splice Enclosure - For splice trays and cable storage only.

Dimensions: 17"W x 11"D x 3.5"H.

Accepts	Height	Rack units	Catalog No.
Up to 6 splice trays	3.50" (89)	2	FCR350SE

NOTE: Splice trays not included.



FSS01

Optical Fiber Hinged Rack Mount Splice Shelf

Dimensions: 17"W x 11"D x 1.75"H.

Accepts	Height	Rack Units	Catalog No.
Up to 2 splice trays	1.75" (45)	1	FSS01

NOTE: Splice trays not included.



STRAY24F



STRAY12F

Splice Trays - 0.4"H x 5"W. Includes cable ties and built-in splice cradle.

Accepts	Length	Catalog No.
24 Fiber, Fusion	10" (254)	STRAY24F
24 Fiber, Mechanical	10" (254)	STRAY24M
12 Fiber, Fusion	7" (178)	STRAY12F
12 Fiber, Mechanical	7" (178)	STRAY12M



FBL1

FBL2

FSP Adapter Bracket - Fits in place of the splice trays.

Description	Catalog No.
1U Bracket - holds 2 FSP adapter panels	FBL1
2U Bracket - holds 4 FSP adapter panels	FBL2





- Cable entry ports designed for stackable mounting.
- Fiber's higher traffic carrying capacity per volume reduces cabling and improves airflow.

Features/Benefits

- FCW capacity: 4 or 12 FSP adapter panels.
- FTU capacity: 2 or 4 FSP adapter panels.

Specifications

- ◆ 16 ga. Cold Rolled Steel construction.
- ◆ Durable black powder coat finish.
- ◆ FCW4SP accepts:
 - Two 7" splice trays if using standard adapter panels.
 - One 7" splice tray if using high-density adapter panels.
- ◆ FCW12SP accepts a maximum of four 10" splice trays.
- ◆ FTU4SP accepts a maximum of two 7" splice trays.
- ◆ The FTU2SP does not accept splice trays.

FCW Wall Mount Cabinets, Double-Door

FCW cabinets accept our FSP series adapter panels. They will also accept splice trays. This style of cabinet has a separate lockable "technician side" for terminating the building cable. The "user side" of the FCW encloses and protects the patch cord connections and can be secured with an optional lock set.

Accepts	Height	Width	Depth	Catalog No.
4 FSP series adapter panels	12" (305)	14" (356)	3.25" (83)	FCW4SP
12 FSP series adapter panels	16" (406)	14" (356)	6.50" (165)	FCW12SP

Supplied with lock (FLOCK1) only on technician's side.

For user's side, order separately either lock kit catalog numbers **FLOCK1** or **FLOCK2**.



FCW12SP



FTU Wall Mount Cabinets, Single-Door

Single door FTU wall mount cabinets (FTU2SP and FTU4SP) utilize our FSP adapter panels. Extended front covers provide patch cord protection. Security can be added with optional key lock kits.

Accepts	Height	Width	Depth	Catalog No.
2 FSP series adapter panels	8.5" (216)	10.6" (269)	2.5" (64)	FTU2SP
4 FSP series adapter panels	11" (279)	13.6" (345)	2.5" (64)	FTU4SP

NOTE: Can use either Lock Kit Catalog No. **FLOCK1** or **FLOCK2** - order separately.



FTU4SP



Accessories - Optional Lock Kit

Fits FCW, FTU and FCR cabinets.

Description	Catalog No.
Lock kit for cabinets keyed the same as the FCW technician side	FLOCK1
Lock kit for cabinets keyed differently than the FCW technician side	FLOCK2



HUBBELL OptiChannel FSP Adapter Panels

For use with FCR, FTR, FCW and FTU enclosures and trays and the FPR3SP panel.

Adapter panels are available as blank plates or with ST-style, SC Duplex and Simplex, FC, MT-RJ, LC and SC to ST-style adapters.

Adapter panels are available in high-density versions.

Zirconia (Ceramic) adapters recommended for singlemode applications.

Features/Benefits

- For multimode and singlemode applications.
- Adapters secured with screws.
- Various colors available to differentiate networks and applications.
- Available loaded, unloaded or as blanks.
- Quick snap in installation.
- SC/APC adapter panels available.

Specifications

- ◆ Cold Rolled Steel panel with a durable black powder coat finish.
- ◆ Dimensions: 1.1"W x 5.1"H.
- ◆ Weight (loaded) - 0.1 lbs.
- ◆ FC/PC adapter housings are Nickel-plated machined brass.
- ◆ ST-style simplex adapters have black oxide Nickel-plated Zinc die-cast housings.
- ◆ Available with Phosphor Bronze or Zirconia Ceramic alignment sleeves in SC, ST-style and LC adapters.
- ◆ SC/APC and FC adapters have Zirconia Ceramic sleeves.

FSP Adapter Panels, SC Duplex



SC Duplex, Standard Version

Pre-loaded. Capacity: 6. Type: 3, SC Duplex

Sleeves	Color	Additional Colors
Phosphor Bronze	Blue	See Chart Below
Zirconia Ceramic	FSPSCD3	FSPSCDM3XX
	FSPSCDS3	FSPSCDS3XX

SC Duplex, High-Density Version

Pre-loaded. Capacity: 6. Type: 3, SC Duplex

Sleeves	Color	Additional Colors
Phosphor Bronze	Blue	See Chart Below
Zirconia Ceramic	FSPSCD6	FSPSCDM6XX
	FSPSCDS6	FSPSCDS6XX

XX = color: "AQ"=Aqua; "BK"=Black.
XX = color: "OR"=Orange; "R"=Red; "Y"=Yellow.
 Other colors for Phosphor Bronze Sleeve arrangements:
 Beige = **FSPSCDBE3** and **FSPSCDBE6**;
 Green = **FSPSCDG3** and **FSPSCDG6**;
 Orange = **FSPSCDO3** and **FSPSCDO6**;
 Red = **FSPSCDR3** and **FSPSCR6**;
 Yellow = **FSPSCDY3** and **FSPSCDY6**.

FSPSCD3

FSPSCDY6

FSP Adapter Panels, SC Simplex



Phosphor Bronze Sleeves - Pre-Loaded

Capacity	Type	Version	Catalog No.
6	6, SC Simplex, blue	Standard	FSPSC6
8	8, SC Simplex, blue	High-Density	FSPSC8

Zirconia Ceramic Sleeves - Pre-Loaded

Capacity	Type	Version	Catalog No.
6	6, SC Simplex, blue	Standard	FSPSCS6

SC Simplex, APC, Zirconia Ceramic Sleeves, Pre-Loaded

For singlemode angle polish applications.

# Fibers	# Adapters	Color	Version	Catalog No.
6	6	Green	Standard	FSPSCA6
8	8	Green	High-Density	FSPSCA8

FSPSC6

FSPSCA6

FSP Adapter Panels, SC to ST-Style



Phosphor Bronze Sleeves - Pre-Loaded

Field installable snap in adapters can be inserted in either direction.

#Fibers	#Adapters	Version	Catalog No.
6	3	Standard	FSPSCST3
12	6	High-Density	FSPSCST6

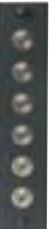
Zirconia Ceramic Sleeves - Pre-Loaded

#Fibers	#Adapters	Version	Catalog No.
6	3	Standard	FSPSCSTDS3
12	6	High-Density	FSPSCSTDS6

FSPSCST3

FSPSCST6

FSP Adapter Panels, FC Simplex



FC Simplex, Zirconia Ceramic Sleeves, Pre-Loaded

# Fibers	# Adapters	Color	Version	Catalog No.
6	6	-	Standard	FSPFC6
8	8	-	High-Density	FSPFCSS8

FSPFC6

FSP Adapter Panels, ST-Style Simplex



Phosphor Bronze Sleeves - Pre-Loaded

Capacity	Type	Version	Catalog No.
6	6 ST-style	Standard	FSPST6
8	8 ST-style	High-Density	FSPST8

Zirconia Ceramic Sleeves - Pre-Loaded

Capacity	Type	Version	Catalog No.
6	6 ST-style	Standard	FSPSTS6

FSPST6

FSPST8

FSP Adapter Panels, ST-Style Duplex



Phosphor Bronze Sleeves - Pre-Loaded

Capacity	Type	Version	Catalog No.
6	3 ST-style Duplex, Blue	Standard	FSPSTD3
12	6 ST-style Duplex, Blue	High-Density	FSPSTD6

Zirconia Ceramic Sleeves - Pre-Loaded

Capacity	Type	Version	Catalog No.
6	3 ST-style Duplex, Blue	Standard	FSPSTD3S
12	6 ST-style Duplex, Blue	High-Density	FSPSTD6S

FSPSTD3

FSP Adapter Panels, LC Duplex

LC Duplex, Standard Version

Pre-loaded. Capacity: 12. Type: 6, LC Duplex

Sleeves	Blue	Additional Colors
Phosphor Bronze	FSPLC6	**
Zirconia Ceramic	FSPLCDS6	FSPLCDS6XX

** Additional colors for Phosphor Bronze arrangements:

Aqua =	FSPLCDM6AQ
Beige =	FSPLCM6
Black =	FSPLCDM6BK
Orange =	FSPLCO6
Red =	FSPLCDM6R
Yellow =	FSPLCY6

XX = color: "AQ"=Aqua; "BE"=Beige; "BK"=Black; "OR"=Orange; "R"=Red; "Y"=Yellow.



FSPLCO6

FSP Adapter Panels, LC Quad

LC Quad, Standard Version

Pre-loaded. Capacity: 12. Type: 3, LC Quad.

Sleeves	Blue	Additional Colors
Phosphor Bronze	FSPLCQ3	***
Zirconia Ceramic	FSPLCQS3	FSPLCQS3XX

LC Quad, High-Density Version

Pre-loaded. Capacity: 24. Type: 6, LC Quad.

Sleeves	Blue	Additional Colors
Phosphor Bronze	FSPLCQ6	***
Zirconia Ceramic	FSPLCQ6	FSPLCQ6XX

XX = color: "AQ"=Aqua; "BE"=Beige; "BK"=Black; "GN"=Green; "O"=Orange; "R"=Red; "Y"=Yellow.*

** Other colors for Phosphor Bronze Sleeve arrangements:

Aqua =	FSPLCQM3AQ and FSPLCQM6AQ;
Beige =	FSPLCQM3BE and FSPLCQM6BE;
Black =	FSPLCQM3BK and FSPLCQM6BK;
Green =	FSPLCQM3GN and FSPLCQM6GN;
Orange =	FSPLCQO3 and FSPLCQO6;
Red =	FSPLCQM3R and FSPLCQM6R;
Yellow =	FSPLCQY3 and FSPLCQY6.



FSPLCQY6

FSP Adapter Panels, MT-RJ

Pre-Loaded

# Fibers	# Adapters	Version	Catalog No.
12	6	Standard	FSPMTRJ6
16	8	High-Density	FSPMTRJ8



FSPMTRJ8

FSP Adapter Panels, JACK-PACK®

(U.S. Patent No. 6273752). Accepts multimedia connections including Hubbell XCELERATOR™ jacks and OPTICHANNEL™ keystone adapters.

Capacity	Version	Catalog No.
4	Standard	FSPHD4X
6	High-Density	FSPHD6X*

* Will not fit into FTU2SP, FTU4SP or FCR350SP54R cabinets or enclosures.



FSPHD4X

FSP Adapter Panels, MTP

Pre-Loaded

# Fibers	# Adapters	Color	Catalog No.
72	6	Aqua	FSPMTPAQ6
72	6	Beige	FSPMTPBE6
72	6	Black	FSPMTP6



FSPMTPAQ6

FSP Adapter Panels, Unloaded

Capacity	Type	Version	Catalog No.
6	SC Simplex, LC Duplex or MT-RJ	Standard	FSPSC6X**
8	SC Simplex, LC Duplex or MT-RJ	High-Density	FSPSC8X**
3	SC Duplex or LC Quad	Standard	FSPSCD3X
6	SC Duplex or LC Quad	High-Density	FSPSCD6X*
6	ST-style	Standard	FSPST6X
8	SC Duplex or LC Quad	High-Density	FSPST8X

* Accepts SC Duplex, SC to ST-style, or LC Quad adapters.

** Accepts SC Simplex, LC Duplex, or MT-RJ adapters.

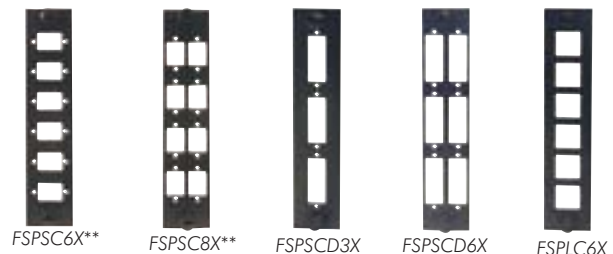


FSP Adapter Panels, Blank

# Adapters	Type	Version	Catalog No.
-	Blank	-	FSPB



FSPB



FSPSC6X** FSPSC8X** FSPSCD3X FSPSCD6X FSPLC6X

HUBBELL OptiChannel Adapters

OPTICHANNEL™ fiber optic adapters are an integral part of the cabling infrastructure. Adapters are the interface to the fiber link and are utilized in work station outlets and optical patch panels.

Specifications

- ◆ MM/SM Mated Pair Insertion Loss: <0.50 dB (0.25 dB typical).
- ◆ Operating/Storage Temperature: -40°C to +75°C.
- ◆ Mating Durability: 500 matings per FOTP-21.
- ◆ Compliant with TIA/EIA-568-C.3 specification.
- ◆ Available with Phosphor Bronze or Zirconia Ceramic alignment sleeves in SC, ST-style and LC adapters.

SC Duplex Adapter

Recommended cut-out: 1.024" x 0.375".
 Delivery: Package of 6 SC duplex adapters, and mounting screws (no screws for snap mount version).



Phosphor Bronze Sleeves

Screw Mount	Blue	Green	Orange	Red	Yellow		
Catalog No.	FASCMPB6	FASCDS6GN	FASCMPB6	FASCDS6R	FASCMPBY6		
Snap mount	Aqua	Beige	Black	Blue	Orange	Red	Yellow
Catalog No.	FASCDM6AQ	FASCDM6	FASCDM6BK	FASCEMPB6	FASCDM6OR	FASCDM6R	FASCDM6Y

Zirconia Ceramic Sleeves

Snap mount	Blue	Orange	Red	Yellow		
Catalog No.	FASCDS6	FASCDS6OR	FASCDS6R	FASCDS6Y		

SC Simplex Adapter

Recommended cut-out: 0.525" x 0.390".
 Delivery: Package of 12 adapters.



Phosphor Bronze Sleeves

Snap mount	Aqua	Beige	Black	Blue	Orange	Red	Yellow
Catalog No.	FASCSC12AQ	FASCSC12	FASCSC12BK	FASCMPB12	FASCSC12OR	FASCSC12R	FASCSC12Y
Screw mount	Blue	Orange	Red	Yellow			
Catalog No.	FASCSSC12	FASCSSC12OR	FASCSSC12R	FASCSSC12Y			

SC Simplex APC Adapter

Zirconia Ceramic sleeves.
 Recommended cut-out: 0.525" x 0.390"
 Delivery: Package of 6.



Singlemode

Snap mount	Green
Catalog No.	FASCAC6

FC Adapter

Recommended cut-out: Double D cut-out: diameter = 0.38", flat = 0.31".
 Delivery: Package of 6



Singlemode

Snap mount	
Catalog No.	FACSS6

ST-style Adapter

Recommended Double D cut-out: diameter = 0.38", flat = 0.31"
 Delivery: Package of 12 adapters, nuts and washers.



Zirconia Ceramic Sleeves

Screw mount	Black Oxide
Catalog No.	FASTSS12

Phosphor Bronze Sleeves

Snap mount	Black Oxide
Catalog No.	FASTMPB12

Phosphor Bronze Sleeves

Snap mount	Beige	Black	Blue
Catalog No.	FASTDS6*	FASTDS6BK*	FASTDMPB6*

Delivery: Package of 6 Phosphor Bronze Sleeves.

*These adapters can mount into unloaded FSP adapter panels (see page F10).





SC to ST-style Duplex Adapter

Recommended SC Duplex cut-out: 1.024" x 0.375".
 Delivery: Package of 6 adapters.



Phosphor Bronze Sleeves

Screw Mount Blue

Catalog No. **FASTSCMPB6**

Snap mount	Aqua	Beige	Black	Blue	Orange	Red	Yellow
Catalog No.	FASTSCDMC6AQ	FASTSCDMC6	FASTSCDMC6BK	FASTSEMPB6	FASTSCDMC6OR	FASTSCDMC6R	FASTSCDMC6Y

Zirconia Ceramic Sleeves

Snap mount Blue Orange Red Yellow

Catalog No. **FASTSCDSC6** **FASTSCDSC6OR** **FASTSCDSC6R** **FASTSCDSC6Y**



SC to ST-style Simplex Adapter

Recommended SC Simplex cut-out: 0.525" x 0.390", or Double D cut-out: diameter = 0.39", flat = 0.31".
 Delivery: Package of 12 adapters and nuts.



FASCSTSEMPB12

Phosphor Bronze Sleeves

Snap mount Beige Blue

Catalog No. **FASCSTSMC12** **FASCSTSEMPB12**

Zirconia Ceramic Sleeves

Snap mount Blue Orange Red Yellow

Catalog No. **FASTSCSSC12** **FASTSCSSC12OR** **FASTSCSSC12R** **FASTSCSSC12Y**



LC Duplex Adapter

SC Simplex style outer housing. Snap mount.
 Recommended cut-out: 0.525" x 0.390".
 Delivery: Package of 6.



FALCMPB6

Phosphor Bronze Sleeves

Snap mount Aqua Beige Black Blue Orange Red Yellow

Catalog No. **FALCDMC6AQ** **FALCDMC6** **FALCDMC6BK** **FALCMPB6** **FALCMPB6OR** **FALCDMC6R** **FALCMPBY6**

Zirconia Ceramic Sleeves

Snap mount Blue Orange Red Yellow

Catalog No. **FALCDSC6** **FALCDSC6OR** **FALCDSC6R** **FALCDSC6Y**



LC Quad Adapter

SC Duplex style outer housing.
 Recommended cut-out: 1.024" x 0.375".
 Delivery: Package of 6.



FAQLCMPB6

Phosphor Bronze Sleeves, Snap Mount

Aqua Beige Black Blue Orange Red Yellow

Catalog No. **FALCQMC6AQ** **FALCQMC6** **FALCQMC6BK** **FALCQMC6BL** **FALCQMC6OR** **FALCQMC6R** **FALCQMC6Y**

Phosphor Bronze Sleeves, Screw Mount

Blue Orange Yellow

Catalog No. **FAQLCMPB6** **FAQLCMPB6OR** **FAQLCMPBY6**

Zirconia Ceramic Sleeves, Snap Mount

Blue Orange Red Yellow

Catalog No. **FALCQSC6** **FALCQSC6OR** **FALCQSC6R** **FALCQSC6Y**



MT-RJ Adapter

SC Simplex style outer housing.
 Recommended cut-out: 0.525" x 0.390".
 Delivery: Package of 6.



FAMTRJMPB6

Snap mount Aqua Beige Black

Catalog No. **FAMTRJC6AQ** **FAMTRJMPB6** **FAMTRJC6BK**

HUBBELL OptiChannel Keystone Adapters

Keystone adapters are factory-loaded with either ST-style, SC simplex, MT-RJ or LC adapters. Keystone adapters are used when fiber connections are needed at the work area.

The MT-RJ and LC and SC keystone adapters are offered in a flush and non-flush mount version.

Specifications

- ◆ Materials:
 - Housings: flame-retardant polymer.
 - Stainless Steel mounting clips.
- ◆ Meets the requirements of TIA/EIA-568-C.3.
- ◆ MM/SM mated pair insertion loss: < 0.50dB (0.25dB typical).
- ◆ Operating/Storage temp: 0°C to 60°C.
- ◆ Adapter snap-in force : 15 ± 5 lb.
- ◆ Mating durability: 500 matings per FOTP-21.
- ◆ Available with Phosphor Bronze or Zirconia Ceramic sleeves in SC, ST-style and LC adapters.

SC Simplex Keystone Adapter



Delivery: 25-carton.

Color	Phosphor Bronze Catalog No.	Zirconia Ceramic Catalog No.
Office White	SFSC	SFSCS
See Color Code	SFSCX	SFSCSX

MT-RJ Keystone Adapter



Delivery: 25-carton.

Colored keystone adapter with beige MT-RJ fiber adapter.

Color	Catalog No.
Office White	SFMTRJ
See Color Code	SFMTRJX

ST-style to SC Simplex Keystone Adapter



Delivery: 25-carton.

Color	Phosphor Bronze Catalog No.	Zirconia Ceramic Catalog No.
Office White	SFSCST	SFSCSTS
See Color Code	SFSCSTX	SFSCSTSX

MT-RJ Keystone Flush Mount Adapter



Delivery: 25-carton.

Color	Catalog No.
Office White	FAMTRJK
See Color Code	FAMTRJKX

SC/APC Simplex Keystone Adapter



With Zirconia Ceramic sleeves. SM/MM.
Delivery: 25-carton.

Color	Catalog No.
Office White	SFSCAOW
See Color Code	SFSCAX

LC Duplex Keystone Adapter



Delivery: 25-carton.

Color	Phosphor Bronze Catalog No.	Zirconia Ceramic Catalog No.
Office White	SFLC	SFLCS
See Color Code	SFLCX	SFLCSX

SC Simplex Flush Mount Keystone Adapter



Delivery: 25-carton.

Color	Phosphor Bronze Catalog No.	Zirconia Ceramic Catalog No.
Office White	SFFSC	SFFSCS
See Color Code	SFFSCX	SFFSCSX

LC Duplex Flush Mount Keystone Adapter



Delivery: 25-carton.

Color	Phosphor Bronze Catalog No.	Zirconia Ceramic Catalog No.
Office White	SFFLC	SFFLCS
See Color Code	SFFLCX	SFFLCSX

ST-style Keystone Adapter



Delivery: 25-carton.

Color	Phosphor Bronze Catalog No.	Zirconia Ceramic Catalog No.
Office White	SFST	SFSTS
See Color Code	SFSTX	SFSTSX

Replace "X" with the following Color Code:

X = "AL"=Almond; "BK"=Black; "G"=Gray*; "EI"=Electric Ivory; "LA"=Light Almond; "W"=White.

* For gray keystone adapter with SC/APC Simplex adapter, order Catalog No. **SFSCAGY**.



HUBBELL OptiChannel Patch Cords and Pigtails

Fiber patch cords provide connections from the work area to the wall outlet, or from active equipment to the patch panel.

Cords are available as duplex or simplex 62.5/125, 50/125 MM or SM fibers. We offer ST-style, SC, MT-RJ or LC connectors. 1.8mm/2.0mm jacket diameter takes up less space for greater patch cord density. 1.8mm/2.0mm jacket diameter takes up less space for greater patch cord density. All patch cords are factory polished and 100% optically tested for superior performance.

Specifications

- ◆ Mated pair insertion loss:
MM: <0.50 dB (0.35dB typical).
SM: <0.35 dB (0.15dB typical).
- ◆ Typical SM mated pair return loss: >-55 dB.
- ◆ Operating/Storage Temperature: 0°C to +75°C.
- ◆ Mating Durability: 500 matings per FOTP-21.
- ◆ Cable Retention: >10 lbs. per FOTP-6.
- ◆ Optical, mechanical and environmental performance: Meets TIA/EIA-568-B.3 specs.
- ◆ 10GbE patch cords are OFNP rated for use in plenum spaces.



50/125mm laser optimized fiber cords now available for 10GbE applications.

SC to SC Patch Cords



SC Duplex to SC Duplex MM

Replace 'X' with standard lengths of **1, 2, 3, 5** or **10** meters

Duplex/Multimode	Catalog No.
SC to SC, 62.5/125	DFPSCSCCXMM
SC to SC, 50/125	DFPSCSCDXMM
SC to SC, 50/125, 10GbE	DFPSCSCEXMM ✓10G
Duplex/Singlemode	Catalog No.
SC to SC Singlemode	DFPSCSCSXSM



ST-style to ST-style Patch Cords



ST-style to ST-style Duplex MM

Replace 'X' with standard lengths of **1, 2, 3, 5** or **10** meters.

Duplex/Multimode	Catalog No.
ST to ST-style, 62.5/125	DFPCSTSTCXMM
ST to ST-style, 50/125	DFPCSTSTDXXMM
Duplex/Singlemode	Catalog No.
ST to ST-style Singlemode	DFPCSTSTXSMM



ST-style to SC Patch Cords



SC Duplex to ST-style Duplex MM

Replace 'X' with standard lengths of **1, 2, 3, 5** or **10** meters.

Duplex/Multimode	Catalog No.
ST-style to SC, 62.5/125	DFPCSTSCCXMM
ST-style to SC, 50/125	DFPCSTSCDXMM
Duplex/Singlemode	Catalog No.
ST-style to SC, Singlemode	DFPCSTSCSXSM



MT-RJ Patch Cords



MT-RJ to MT-RJ Duplex MM

MT-RJ Duplex to ST-style Duplex MM

Replace 'X' with standard lengths of **1, 2, 3** or **5** meters.

Duplex/Multimode	Catalog No.
MT-RJ to MT-RJ, 62.5/125	DFPCRJRJCXMM
MT-RJ to ST-style, 62.5/125	DFPCRJSTCXMM
MT-RJ to SC 62.5/125	DFPCRJSCCXMM



LC Patch Cords



LC Duplex to LC Duplex MM



LC Duplex to SC Duplex MM

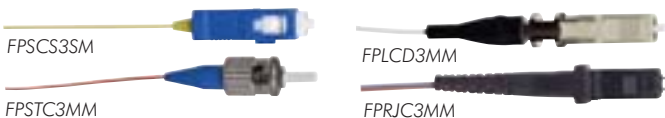
Replace 'X' with standard lengths of **1, 2, 3** or **5** meters.

Duplex/Multimode	Catalog No.
LC to LC, 62.5/125	DFPCLCLCCXMM
LC to ST-style, 62.5/125	DFPCLCSTCXMM
LC to SC, 62.5/125	DFPCLCSCCXMM
LC to LC, 50/125, 10GbE	DFPCLCLCEXMM ✓10G
LC to SC, 50/125, 10GbE	DFPCLCSCEXMM ✓10G
Duplex/Singlemode	Catalog No.
LC to LC, Singlemode	DFPCLCLCCXSMM
LC to ST-style, Singlemode	DFPCLCSTCXSM
LC to SC, Singlemode	DFPCLCSCCXSM



Fiber Pigtails (3 meters long)

Hubbell's fiber optic pigtails are manufactured with superior quality connectors, factory polished to provide low insertion loss and low back reflection. Pigtails are available in LC, MT-RJ, SC and ST-style versions with both singlemode and multimode 900µm buffered fiber types. All pigtails are 100% factory tested for insertion loss after polishing. For special requirements such as custom lengths and buffer colors, contact your Hubbell representative.



Delivery: 1 fiber optic pigtail with 900µm buffer

Connector Type	Version	Catalog No.
SC	62.5/125µm Multimode	FPSCC3MM
SC	50/125µm Multimode	FPSCD3MM
SC	50/125µm 10GbE Multimode	FPSC3MM ✓10G
SC	Singlemode	FPSC3SM
ST-style	62.5/125µm Multimode	FPSTC3MM
ST-style	50/125µm Multimode	FPSTD3MM
ST-style	Singlemode	FPSTS3SM
LC	62.5/125µm Multimode	FPLCC3MM
LC	50/125µm Multimode	FPLCD3MM
LC	50/125µm 10GbE Multimode	FPLCE3MM ✓10G
LC	Singlemode	FPLCS3SM
MT-RJ	62.5/125µm Multimode	FPRJC3MM
MT-RJ	50/125µm Multimode	FPRJD3MM

Custom pigtails, assemblies and cords available upon request - see page F16.



Compatible with Hubbell Labeling System - see page M8.

Patch Cord and Fiber Trunk Cable Assemble to Order Program




- High performance, fast lead time.
- Custom-configured assemblies specific to the job.
- 100% factory tested, factory assembled.
- Fiber's higher traffic carrying capacity per volume reduces cabling and improves airflow.

Hubbell's OPTICHANNEL™ Assemble-to-Order cable assembly program can deliver custom factory fiber assemblies with guaranteed performance and timely delivery with all of today's high performance connectors.

All Hubbell fiber cable assemblies are built to meet to ANSI/TIA-568-C.3.

Hubbell simplex and duplex fiber patch cords are available on an assemble-to-order (ATO) basis. You simply pick the fiber size, the flame-rating designation, the connector(s) on each end and the length.

Contact Customer Service to configure a factory-tested fiber cable assembly customized for your application.



Cable Assemblies are available with a variety of cable styles and connectors. Cable configurations include:

- ◆ Simplex
- ◆ Duplex
- ◆ Multifiber Premise Cables
- ◆ OFNR Riser-rated
- ◆ OFNP Plenum-rated

With either:

- ◆ 900µm breakouts, or
- ◆ 1.8/2.0mm breakouts

Choose from:

- ◆ 50-micron fiber
- ◆ Laser Optimized 50-micron (10 GbE) fiber
- ◆ 62.5-micron fiber
- ◆ Singlemode fiber

Connector choices include:

- ◆ FC
- ◆ LC
- ◆ MT-RJ Male
- ◆ MT-RJ Female
- ◆ MTP Male
- ◆ MTP Female
- ◆ SC
- ◆ ST-Style

In Angle Polish finish, from 1 to 500 meters long.

Contact Customer Service to configure a factory-tested fiber cable assembly customized for your application.

Fiber Trunk Cable Assembly Options



Simplex



Duplex

Multifiber Trunk Cables



FC Angled

MTP Female



FC

MTP Male



LC Simplex

SC Simplex



LC Duplex



MT-RJ Male

SC Duplex



ST-style Simplex

Pre-polished, Non-adhesive Fiber Optic Connectors

Hubbell's **2CLICK**[®] pre-polished connectors are field installable fiber optic connectors that eliminate the need for polishing or adhesives in the field.

2CLICK[®] connectors provide a simple, quick termination method for either singlemode or multimode fibers.

2CLICK[®] connectors feature a factory polished ferrule with an integral fiber stub that splices to building cable fibers. Index matching gel and a precision mechanical alignment system insure a low loss connection.

Each **2CLICK**[®] connector comes with a factory-installed termination clip that holds the clamping device open while the fiber is inserted. Once the fiber is in place, the termination clip is removed and discarded. Assembly can be completed in just 2 minutes or less. Simply strip the buffer, cleave and insert the fiber into the pre-polished connector and release the termination clip to complete the assembly. In addition, no expensive tools, jigs or messy epoxy needed.

For use with 250 μ m or 900 μ m buffer fibers.



Factory polished for superior optical transmission.

Specifications

- ◆ Meets TIA-568-C.3 performance requirements.
- ◆ Singlemode:
 - Operating temperature range: -40°C to +75°C.
 - Insertion Loss: 0.2dB average, 0.5dB max.
 - Return Loss: 56dB average, 45dB max.
- ◆ Multimode:
 - Operating temperature range: -40°C to +70°C.
 - Insertion Loss: 0.1dB average, 0.5dB max.
 - Return Loss: 20dB max.
- ◆ Material: Engineered polymer housing with Zirconia ferrule.



- Termination in 2 Minutes or Less.
- No Polishing or Adhesives Required.
- No Expensive Tools Needed.
- Factory-Polished, Low-Loss Connector.
- Supports 10GbE Network Connections.
- Fiber's Higher Traffic Carrying Capacity per Volume Reduces Cabling and Improves Airflow.



2CLICK® No Epoxy, No Polish Connectors

Delivery: One bag of 12 connectors each individually bagged. Each bag includes black boot, connector, dust cap and termination clip.

2CLICK® Pre-Polished LC Connectors

- Multimode, 50µm, 10G, 12-pk, Aqua Housing
- Multimode, 50µm, 12-pk, Black Housing
- Multimode, 62.5µm, 12-pk, Beige Housing
- Singlemode, 12-pk, Blue Housing

Catalog No.

- FCLC50GM12** ✓10G
- FCLC50M12**
- FCLC62M12**
- FCLCSM12**



FCLC50M12

2CLICK® Pre-Polished SC Connectors

- Multimode, 50µm, 10G, 12-pk, Aqua Housing
- Multimode, 50µm, 12-pk, Black Housing
- Multimode, 62.5µm, 12-pk, Beige Housing
- Singlemode, 12-pk, Blue Housing

Catalog No.

- FCSC50GM12** ✓10G
- FCSC50M12**
- FCSC62M12**
- FCSCSM12**



FCSC50M12

2CLICK® Pre-Polished ST-style Connectors

- Multimode, 50µm, 10G, 12-pk, Aqua Housing
- Multimode, 50µm, 12-pk, Black Housing
- Multimode, 62.5µm, 12-pk, Beige Housing
- Singlemode, 12-pk, Blue Housing

Catalog No.

- FCST50GM12** ✓10G
- FCST50M12**
- FCST62M12**
- FCSTSM12**



FCST62M12

Fiber Cleaver, Single Fiber Multimode

Delivery: 1 tool.

Catalog No. **OFCLV3**



Tool Pouch

Tool pouch contains OFCLV3 cleave tool, OFSTRIP2 fiber strip tool, non-hazardous fiber cleaning solution, Kevlar scissors, ruler, wipes and black permanent marker.

Delivery: 1 tool pouch.

Catalog No. **OFTP05**



Fiber Cleaver, Singlemode

Delivery: 1 tool.

Catalog No. **OFCLV4**



Fiber Strip Tool

900 micron buffered fiber.

Delivery: 1 tool.

Catalog No. **OFSTRIP**



Field Installation Tool Kit

Tool Kit contains:

- OFSTRIP2 fiber strip tool
- OFCMT04 crimp tool
- Universal 2.5mm and 1.25mm polishing pucks
- Polishing plate
- 70 durometer polishing pad
- Polishing paper
- 200X microscope with 2.5mm and 1.25mm universal adapters
- Kevlar scissors
- Reversible blade carbide scribe
- Permanent marker
- Protective glasses
- Debris bottle for fiber safety
- Alcohol wipes
- Lint free cleaning wipes
- Water bottle
- Alcohol bottle
- 6" ruler
- 10" long x 7" wide x 6.25" high carrying case with the lid functioning as a portable work surface.

Delivery: 1 tool kit.

Catalog No. **OFTK05**



Fiber Buffer and Jacket Strip Tool

Strips: 900 micron buffer, 250 acrylate buffer, loose tube and PVC jackets.

Delivery: 1 tool.

Catalog No. **OFSTRIP2**

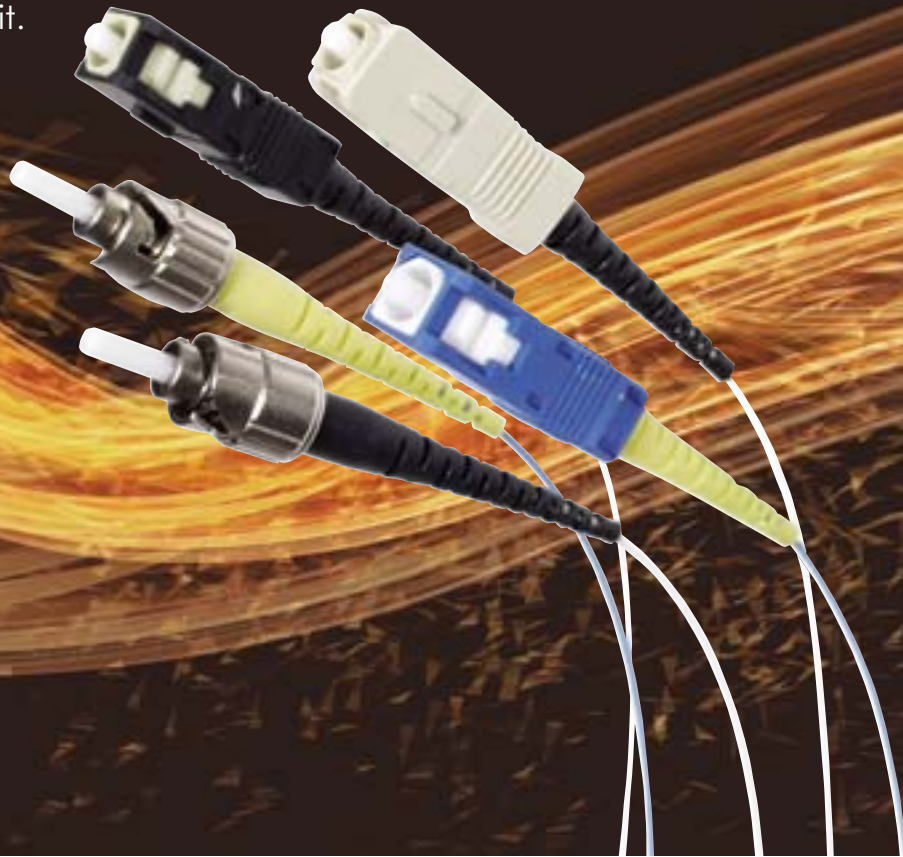


HUBBELL 2Quick Crimp-Style Connectors

Your choice of crimp or adhesive termination.

Optional 3mm cable kit.

Telcordia style
900 micron strain
relief boot.



Specifications

- ◆ Operating temperature: 0-60°C.
- ◆ **Materials**
 - Connector ferrule: Zirconia Ceramic.
 - Connector body/nut: Nickel plated brass/zinc or polymer.
 - Crimp insert/crimp tube: Nickel plated brass/thermoplastic elastomer polymer.
 - Dust cap: Nylon or PVC.
 - Strain relief boot: Flame retardant (UL Rated 94-V0) polymer.
- ◆ TIA/EIA-568-C.3 compliant for long-term reliability.
- ◆ High quality Zirconia PC ferrule.
- ◆ 900 micron and 3mm cable applications*.
- ◆ U.S. Patent Nos. 6390688, 6726373 and 6600858.

* For 3mm cables, use OFPCRKM or OFPCRKS crimp ring/boot kits.

HUBBELL Advantage

- Industry's First and Only TIA/EIA-568-B.3 Compliant Fiber Crimp Connector for Long-term Reliability.
- Patented **2QUICK**[®] Flat Fiber Crimp Technology.
- Quick, Easy Installation.
- Fiber's Higher Traffic Carrying Capacity per Volume Reduces Cabling and Improves Airflow.



2QUICK® ST-style and SC Crimp-style Connectors

Hubbell's 2QUICK® SC and ST-style connectors install in minutes. The 2QUICK® connectors crimp easily on to 900 micron buffered fiber with a HPW hand tool. The 2QUICK® connector system eliminates the need for adhesives and expensive curing ovens and provides a reliable fiber optic connection.

NOTE: Any ST-style or SC MM 2QUICK® connector can be installed on 50/125 as well as 62.5/125 fiber.

2QUICK® ST-style Connectors

Delivery: 1 connector, dust cap, black boot (MM) or yellow boot (SM) and crimp insert.

Description	Pack of 12 Catalog No.	Pack of 100 Catalog No.
Multimode	FCSTMQ12RA	FCSTMQ100R
Singlemode	FCSTSQ12R	FCSTSQ100R

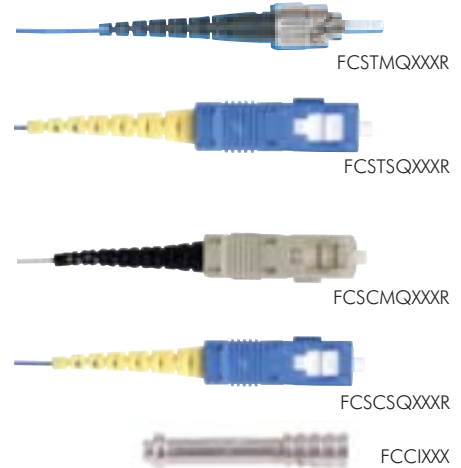
2QUICK® SC Connectors

Delivery: 1 connector, dust cap, black boot (MM) or yellow boot (SM) and crimp insert.

Description	Pack of 12 Catalog No.	Pack of 100 Catalog No.
Multimode	FCSCMQ12R	FCSCMQ100R
Singlemode	FCSCSQ12R	FCSCSQ100R

For the tools, kits, and expendables required, see below.

Crimp Inserts	Pack of 12 Catalog No.	Pack of 100 Catalog No.
MM/SM	FCCI12	FCCI100



Crimp Tool

For 2QUICK® Crimp and OPTICHANNEL™ SC/ST-style epoxy/anaerobic connectors. Crimp die-set (included) pre-set at factory.

Dual hex cavity: .0178"/.0151".
Flat crimp 0.052".
Hex crimp 0.136".
Hardened die.

Catalog No. **OFMT04**



Die-Set

For 2QUICK® crimp tool. Replacement die for OFCMT04.

Catalog No. **OFCMD04**



Cleave Tool

For 2QUICK® crimp connectors only.

Catalog No. **OFCLV1**

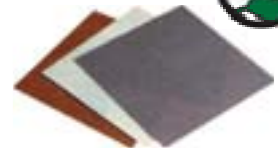


Polishing Film

Replacement kit.

Delivery: 25 sheets of 5, 1, and 0.3 micron, 1 polishing pad.

Catalog No. **OFLFP**



Fiber Cleaver, Single Fiber Multimode

Delivery: 1 tool.

Catalog No. **OFCLV3**



Polishing Puck

Stainless Steel, polished surface. SC/ST-style or LC compatible. Delivery: 1 puck.

	Catalog No.
SC/ST-style	OFPUCK
LC	OFPUCKLC



Installation Tool, MT-RJ

Delivery: 1 tool.

Catalog No. **OFCTOOL1**



Fiber Strip Tool

900 micron buffered fiber.

Delivery: 1 tool

Catalog No. **OFSTRIP**



Hand Scribe Tool

Sapphire blade.

Delivery: 1 tool and scribe guide.

Catalog No. **OFSCRIBE**



Fiber Buffer and Jacket Strip Tool

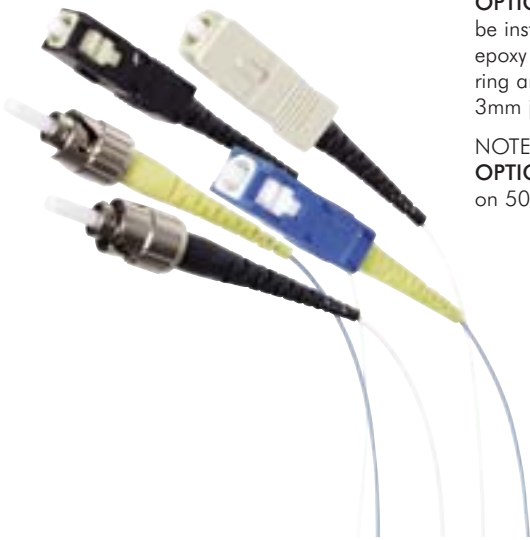
Strips: 900 micron buffer, 250 acrylate buffer, loose tube and PVC jackets.

Delivery: 1 tool.

Catalog No. **OFSTRIP2**



HUBBELL
OptiChannel Adhesive Fiber Connectors



OPTICHANNEL™ adhesive connectors can be installed with either anaerobic quick-cure or epoxy heat-cure adhesives. A separate crimp ring and boot kit is available to terminate 3mm jacketed cables.

NOTE: Any ST-style, SC or LC MM OPTICHANNEL™ connector can be installed on 50/125 as well as 62.5/125 fiber.

Features/Benefits

- Zirconia PC ferrule (ST, SC and LC).
- Pre-polished MT-RJ connectors require.
- LC connectors require no crimping.
- 900 micron and 3mm cable applications.
- TIA/EIA-568-C.3 compliant for long-term reliability.
- Telcordia style strain relief boot.

Specifications

ST, SC and LC Adhesive Connectors

- ◆ MM/SM Mated Pair Insertion Loss: <0.50dB (0.25dB typical).
- ◆ Operating temperature: -40 to 75°C (heat-cure epoxy).

MT-RJ Pre-Polished Connectors

- ◆ MM Mated Pair Insertion Loss: <0.75dB (0.50dB typical).
- ◆ Operating Temperature: -40 to 75°C.



OPTICHANNEL™ ST-style, SC, LC Adhesive and MT-RJ Pre-Polished Connectors



FCSTMXXXR



FCSTSXXXR



FCSCMXXXR



FCSCSXXXR



FCMTRJXX



FCLCXX



OFPCRXX

OPTICHANNEL™ ST-style Connectors

Delivery: 1 connector, dust cap, black boot (MM) or yellow boot (SM) and dust cap.

Description	Pack of 12 Catalog No.	Pack of 100 Catalog No.
Multimode	FCSTM12R	FCSTM100R
Singlemode	FCSTS12R	FCSTS100R

OPTICHANNEL™ SC Connectors

Delivery: 1 connector, dust cap, black boot (MM) or yellow boot (SM) and dust cap.

Description	Pack of 12 Catalog No.	Pack of 100 Catalog No.
Multimode	FCSCM12R	FCSCM100R
Singlemode	FCSCS12R	FCSCS100R

OPTICHANNEL™ MT-RJ Connectors (900µm only)

Delivery: Factory pre-polished/fiber stub connector with alignment pins, black boot and dust cap.

	50 µm Catalog No.	62.5 µm Catalog No.
Package of 6	FCMTRJ50	FCMTRJ62

OPTICHANNEL™ LC Simplex Adhesive Connectors (900µm only)

Delivery: LC connector, white boot and dust cap.

	Multimode Catalog No.	Singlemode Catalog No.
Package of 6	FCLCMM	FCLCSM

Crimp Rings/3mm Boot (SC/ST-style 2QUICK® or OPTICHANNEL™ connectors) - for 3mm jacketed cables.

Delivery: 25 crimp sleeves and boots (MM = black, SM = yellow).

Format	Catalog No.	Format	Catalog No.
Multimode	OFPCRKM	Singlemode	OFPCRKS

Termination Kits for SC/ST-style Connectors



Delivery: Canned air, 10 oz., tool pouch (OFTP02C) with fiber and cable preparation tools, wipers, heat cure epoxy, anaerobic adhesive and primer, polishing paper, polishing pad, heat-cure epoxy oven, safety glasses, syringes, needles, cure adapters and clips.

Description	Catalog No.
Termination Kit for SC/ST-style connectors, 16-port (110VAC)	OFTK03C
Termination Kit for SC/ST-style connectors, 8-port (220VAC)	OFTK04C*

* Does not contain canned air.

Information on the Field Installation Tool Kit, OFTK05 is provided on page F19.



Termination and Tools for Fiber Connectors

Connector Installation Tool Pouch

For SC/ST-style Connectors

Delivery: Sapphire scribe, scribe guide, black permanent marker, Kevlar scissors, strip template and polishing fixture, ruler, buffer/cable jacket stripper, 200X microscope assembly, crimp tool and die.

Catalog No. **OFTP02C**



OFTP04C

For MT-RJ and LC Connectors

Delivery: Black permanent marker, Kevlar scissors, ruler, buffer stripper, stripper/cutter 30-10AWG. MT-RJ tool pouch includes cam tool and fiber cleaver; LC tool pouch includes LC cure adapters, scribe guide, polishing puck, sapphire scribe and 200X microscope.

Description	Catalog No.	Description	Catalog No.
MT-RJ	OFTP03	LC	OFTP04C

Epoxy Replacement Kit

Easy mix (1g) tubes fit into syringes. Superior bond strength. Cures in 10 minutes at 90°C. Eight month shelf life. 30 minute working time.

Delivery: 6 tubes 1g, 6 syringes/needles.

Catalog No. **OFCEP**



Anaerobic Replacement Kit

Cures in 6-10 seconds. Superior bond strength. Convenient paint brush in cap. Needle tip fits on adhesive bottle.

Delivery: Primer and adhesive, 10 syringes and 10 needles.

Catalog No. **OFCAP**

Delivery: Replacement bottle of primer only.

Catalog No. **OFPRIME**



Crimp Tool

For **2QUICK®** Crimp and **OPTICHANNEL™** SC/ST-style epoxy/anaerobic connectors. Crimp die-set (included) pre-set at factory.

Dual hex cavity: .0178"/.0151". Flat crimp 0.052". Hex crimp 0.136". Hardened die.

Catalog No. **OFCMT04**



Hand Scribe Tool

Sapphire blade.

Delivery: 1 tool and scribe guide.

Catalog No. **OFSCRIBE**

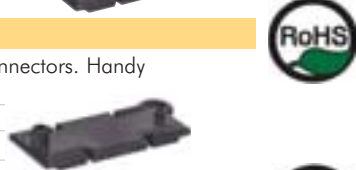


Scribe Guide

Suitable for SC, ST-style, or LC connectors. Handy loop for key chains.

Delivery: package of 6

Catalog No. **OFSG**



Polishing Puck

Stainless Steel, polished surface. SC/ST-style or LC compatible.

Delivery: 1 puck.

	Catalog No.
SC/ST-style	OFPUCK
LC	OFPUCKLC



Polishing Film

Replacement kit.

Delivery: 25 sheets of 5, 1, and 0.3 micron, 1 polishing pad.

Catalog No. **OFLFP**



Epoxy Cure Adapters

For heat cure oven.

Delivery: Package of 6.

	Catalog No.
SC/ST-style	OFCA
LC	OFCALC



Complete Test Set, Multimode

Batteries and soft pouch included. Fully calibrated at factory. ST-style adapter ports.

Delivery: 1 power meter, 1 dual wavelength LED source, 1 soft pouch.

Description	Catalog No.
Complete kit	OFPLK813A
Power Meter Dual wavelength	OFPM813
LED Light Source	OFLS813
Dual wavelength, MM	

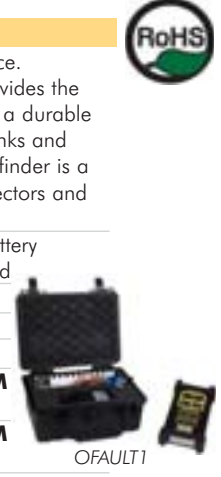


Fiber Optic Fault Finder

The fault finder kit is a dual visible laser light source. (OFAULT2 is single wavelength visible laser.) It provides the fiber optic system installer and troubleshooter with a durable test instrument to visibly locate excessive bends, kinks and breaks in duplex fiber optic cables. Also, the fault finder is a useful tool to optimize **2CLICK®** and MT-RJ connectors and for indicating polarity.

Delivery: OFAULT1: Waterproof carrying case, battery charger, MT-RJ assembly clip and MT-RJ patch cord

Catalog No.	Description
OFAULT1	Accessories
FCMTRJCLP	MT-RJ Assembly clip
DFPCRJRJC1MM	MT-RJ Duplex patch cord 1m 62.5/125µm
DFPCRJSTC1MM	MT-RJ to ST-style duplex patch cord, 1m, 62.5/125µm
DFPCRJSCC1MM	MT-RJ to SC duplex patch cord 1m, 62.5/125µm



Microscope, 400X

Built-in illuminator. Soft pouch. Batteries included. SC/ST-style adapter included.

Description	Catalog No.
SC/ST-style Microscope	OFSCOPE1
LC Adapter (400X microscope only)	FOADPTLC



OPTISOK™

Bundle Size Range	Catalog No.
0.125-0.562"	CCPS1
0.250-0.750"	CCPS2
0.750-1.750"	CCPS3



Support Grips

Single Eye, Single Weave

Cable Diameter Range Inches (cm)	Approx. Breaking Strength Lbs. (N)	Closed Mesh Catalog No.	Rod Closing Split Mesh Catalog No.
.18"- .25" (.46-.63)	300 (1,334)	022291000	022291016
.23"- .32" (.58-.81)	300 (1,334)	022291001	022291017
.30"- .39" (.76-.99)	300 (1,334)	022291002	022291018
.37"- .48" (.94-1.22)	300 (1,334)	022291003	022291019
.46"- .58" (1.17-1.47)	400 (1,779)	022291004	022291020
.56"- .71" (1.42-1.80)	600 (2,669)	022291005	022291021
.69"- .88" (1.74-2.24)	800 (3,558)	022291006	022291022

* IMPORTANT: Consult Factory Support for Safety and Working Load Factors for Wire Mesh Grips.

