



CROSS CONNECT

LEADING THE INDUSTRY IN PRODUCT INNOVATION, COMPONENT DESIGN, AND CATEGORY SYSTEM PERFORMANCE, WE DELIVER CONNECTIVITY FOR THE NEXT GENERATION OF PERFORMANCE WITH OUR FULL LINE OF CROSS CONNECT AND WORK STATION PRODUCTS.



FACE PLATES • PATCH CORDS • CABLE ASSEMBLIES • OUTLET FRAMES • SURFACE BOXES • JACKS • CATEGORY 6 SYSTEM
 ADAPTERS • Audio Video CONNECTORS • FRONT-LOADING FACE PLATES • FURNITURE PLATES • SHIELDED JACKS • SPE
 1-PUNCH TOOL • USOC • CATEGORY 5E • SURFACE MOUNT BOXES • NEXTSPEED PRODUCTS • MULTIMEDIA CONNE
 XCELERATOR JACKS • ASCENT 10GbE • SYSTEM CHANNEL • MODULAR PLUGS • CROSS CONNECT SYSTEMS • PATCH
 MODULAR 66 BLOCKS • LABELING SOLUTIONS • RACK MOUNT KITS • MULTIMEDIA PANELS • CONSOLIDATION POIN
 PATCH PANELS • MULTIMEDIA PLATE • WALL PHONE PLATES • OUTLET PLATES • REAR-LOADING FACE PLATES • BULK CO
 ISTATION PRODUCTS • 110 BLOCKS • CATEGORY 3 • TAMPER-RESISTANT FACE PLATES • ISTATION AUDIO VIDEO MO

CROSS-CONNECT CONTENTS



PRODUCT	PAGE
NEXTSPEED® ASCENT PATCH PANELS, CATEGORY 6A.....	E4
NEXTSPEED® PATCH PANELS, CATEGORY 6	E6
SPEEDGAIN® PATCH PANELS, CATEGORY 5E.....	E8
ISTATION™ MULTIMEDIA AND KEYSTONE PATCH PANELS.....	E10
SPEEDGAIN® GIGABIT ETHERNET PANELS	E12
SPECIALTY PATCH PANELS.....	E13
CONNECTING BLOCK SYSTEM, CAT 6.....	E14
CONNECTING BLOCK SYSTEM, CAT 5E.....	E16
BLOCK RACK MOUNT KITS, CAT 6/CAT 5E	E18
BLOCK WALL MOUNT KITS, CAT 6/CAT 5E.....	E19
66 BLOCK.....	E20

HUBBELL NextSpeed

Ascent, Category 6A Patch Panels

Design

- Enhanced common mode design to eliminate residual and reflected NEXT and ANEXT.

Performance

- Balanced PCB design delivers significant headroom over the TIA Category 6A standard up to 500MHz providing true 10GbE application assurance.

Reliability

- Application: Third-Party qualified for 10 Gigabit Ethernet Transmission IEEE 802.3an.
- Component: Third-Party verified for TIA-568-C.2 Category 6A component.
- Channel: Third-Party tested for ISO 11801 Class EA compliant.
- Current Capacity: Qualified for PoE and PoE+ IEEE 802.3at.
- Mechanical: Third-Party verified to TIA-568-C.2.
- Manufacturing: 100% factory tested in a controlled environment.

Identification

- Centered port identification allows for greater visibility of labels and clean patch cord organization on a 48-port patch panel.

Specifications

- Nose contact material: Beryllium Copper with Precious Metal plating with Nickel under-plating.
- Contact performance confirmed over the full range of TIA plug deflection limits.

Standards

- TIA-568-C.2 (Previously 568-B.2-10 Category 6A) component.
- ISO 11801 Class EA Compliant (Category 6A).
- IEEE 802.3at.
- UL Listed 1863.

Durability

- Rolled edge construction provides rugged strength to eliminate flex during termination.

Installation Ease

- Third hand location pin provides a hands-free installation. Simplifies rack layout.



Administration

- Accepts Hubbell laser printable label sheets and industry recognized 0.5" hand held printer tape.

Superior Strain Relief

- Locking IDC stuffer cap ensures termination retention, securing wires during installation.

HUBBELL Advantage

- True TIA and ISO Category 6A Component Compliance.
- Labor Savings: Exclusive 1-Punch Termination Reduces Termination Time by 75%.
- Third-Party Tested and Verified.
- Eco-Friendly Packaging Utilizes Recyclable Materials and Eliminates Excess Packing Waste.



NEXTSPEED® Ascent, Category 6A, Component Patch Panels

The NEXTSPEED® Ascent Category 6A Patch Panel exceeds TIA Category 6A and ISO component specifications supporting network convergence protocols delivering maximum 10GbE bandwidth and extended reliability for all LAN, multimedia, and Power over Ethernet applications.

Ports	Height	Width	Rack Units	Color	Catalog No.	
24	1.75" (45)	19" (483)	1	Black	HP6A24U	✓10G
48	3.50" (89)	19" (483)	2	Black	HP6A48U	✓10G
96	7.00" (178)	19" (483)	4	Black	HP6A96U	✓10G
24	1.75" (45)	19" (483)	1	Silver	HP6A24US	✓10G
48	3.50" (89)	19" (483)	2	Silver	HP6A48US	✓10G
96	7.00" (178)	19" (483)	4	Silver	HP6A96US	✓10G



HP6A24U



HP6A48U



NEXTSPEED® Ascent, Category 6A, Component Angled Patch Panels

Ports	Height	Rack Units	Catalog No.	
24	1.75" (45)	1	HP6A24AU	✓10G
48	3.50" (89)	2	HP6A48AU	✓10G



HP6A48AU



MUTOA, Category 6A Component

Features/Benefits

- Delivers Category 6A performance in a flexible format for open office and extended LAN applications.

Specifications

- ◆ UL and cUL Listed.

Description	Catalog No.
Consolidation point block, 12-port, Category 6A, universal, 89D	P6A12U ✓10G



1-Punch Termination Tool

1-Punch Tool for P6A Series Patch Panels

Patch Panel tool with head and blades	TX4PP
Patch Panel tool replacement head (includes blades)	TX4PPH
Patch Panel tool replacement blades	TX4PPBL



TX4PP



Rear Cable Management Bars

Description	Catalog No.
Screws to rear flange of 19" rack.	CMBR ✓10G
Holds each wire to minimize ANEXT and maximize performance.	
Clips to rear of panels.	PCBLMGT



CMBR



PCBLMGT

Category 6 Patch Panels

Design

- Center balanced to Category 6 plug specifications.

Performance

- Balanced PCB design delivers significant headroom over the TIA Category 6 standard up to 250MHz providing true application assurance.

Administration

- Accepts Hubbell laser printable label sheets and industry recognized 0.5" hand held printer tape.

Reliability

- Application: Third-Party qualified for 10 Gigabit Ethernet Transmission IEEE 802.3an (TSB-155).
- Component: Third-Party verified for TIA-568-C.2 Category 6 Component.
- Channel: Third-Party verified for ISO 11801 Class EA compliant.
- Current Capacity: Qualified for PoE and PoE+ IEEE 802.3at.
- Manufacturing: 100% factory tested.

Specifications

- ◆ Nose contact material: Beryllium Copper with Precious Metal plating with Nickel under-plating.
- ◆ Contact performance confirmed over the full range of (FCC Specification) deflection limits.

Standards

- TIA-568-C.2 Category 6 Component.
- ISO 11801 Class E Compliant Category 6.
- IEEE 802.3at.
- UL Listed 1863.

Durability

- Rolled edge construction provides rugged strength to eliminate flex during termination.

Identification

- Centered port identification allows for greater visibility of labels and clean patch cord organization on a 48-port patch panel.



Installation Ease

- Third hand location pin provides a hands-free installation. Simplifies rack layout.

Superior Strain Relief

- Optional cable management bar (CMBR) attaches to the rack behind the panel providing excellent strain relief.

HUBBELL Advantage

- TIA Category 6 Component Compliance.
- Labor Savings: Exclusive 1-Punch Termination Reduces Termination Time by 75%.
- Third-Party Tested and Verified.
- Eco-Friendly Packaging Utilizes Recyclable Materials and Eliminates Excess Packing Waste.



NEXTSPEED® Universal Patch Panel, Category 6

The NEXTSPEED® Category 6 Patch Panel exceeds TIA Category 6 and ISO component specifications supporting network convergence protocols delivering maximum bandwidth and extended reliability for all LAN, multimedia, and Power over Ethernet applications.

Ports	Height	Rack Units	Black, Protected PCB Catalog No.	White, Protected PCB Catalog No.
24	1.75" (45)	1	P6E24U	P6E24UW
48	3.50" (89)	2	P6E48U	P6E48UW
96	7.00" (178)	4	P6E96U	P6E96UW



P6E48U



NEXTSPEED® Angled, Universal Patch Panel, Category 6

Ports	Height	Rack Units	Catalog No.
24	1.75" (45)	1	P624AU
48	3.50" (89)	2	P648AU



P624AU



P648AU



MUTOA, Category 6

Features/Benefits

- Delivers Category 6 performance in a flexible format for open office and extended LAN applications.

Specifications

- The Category 6 CPB is designed to exceed TIA-568-C component specs.
- UL and cUL Listed.

Description	Catalog No.
Consolidation point block, 12-port, Category 6, universal, 89D	P612U



P612U



1-Punch Termination Tool

1-Punch Tool for P6E Series Patch Panels

Patch Panel tool with head and blades	TX4PP
Patch Panel tool replacement head (includes blades)	TX4PPH
Patch Panel tool replacement blades	TX4PPBL



TX4PP



Rear Cable Management Bars

Description	Catalog No.
Screws to rear flange of 19" rack.	CMBR
Holds each wire to maximize performance.	
Clips to rear of panels.	PCBLMGT



CMBR



PCBLMGT

HUBBELL SpeedGain

Category 5e Patch Panels

Design

- Center balanced to Category 5e plug specifications.

Performance

- Balanced PCB design delivers significant headroom over the TIA Category 5e standard up to 100MHz providing true application assurance.

Reliability

- Application: Third-Party qualified for Gigabit Ethernet Transmission IEEE 802.3.
- Component: Third-Party verified for TIA-568-C.2 Category 5e Component.
- Channel: Third-Party verified for ISO 11801 Class D Compliant.
- Current Capacity: Qualified for PoE and PoE+ IEEE 802.3at.
- Manufacturing: 100% factory tested.

Identification

- Centered port identification allows for greater visibility of labels and clean patch cord organization on a 48-port patch panel.

Specifications

- ◆ Nose contact material: Beryllium Copper with Precious Metal plating with Nickel under-plating.
- ◆ Contact performance confirmed over the full range of (FCC Specification) deflection limits.

Standards

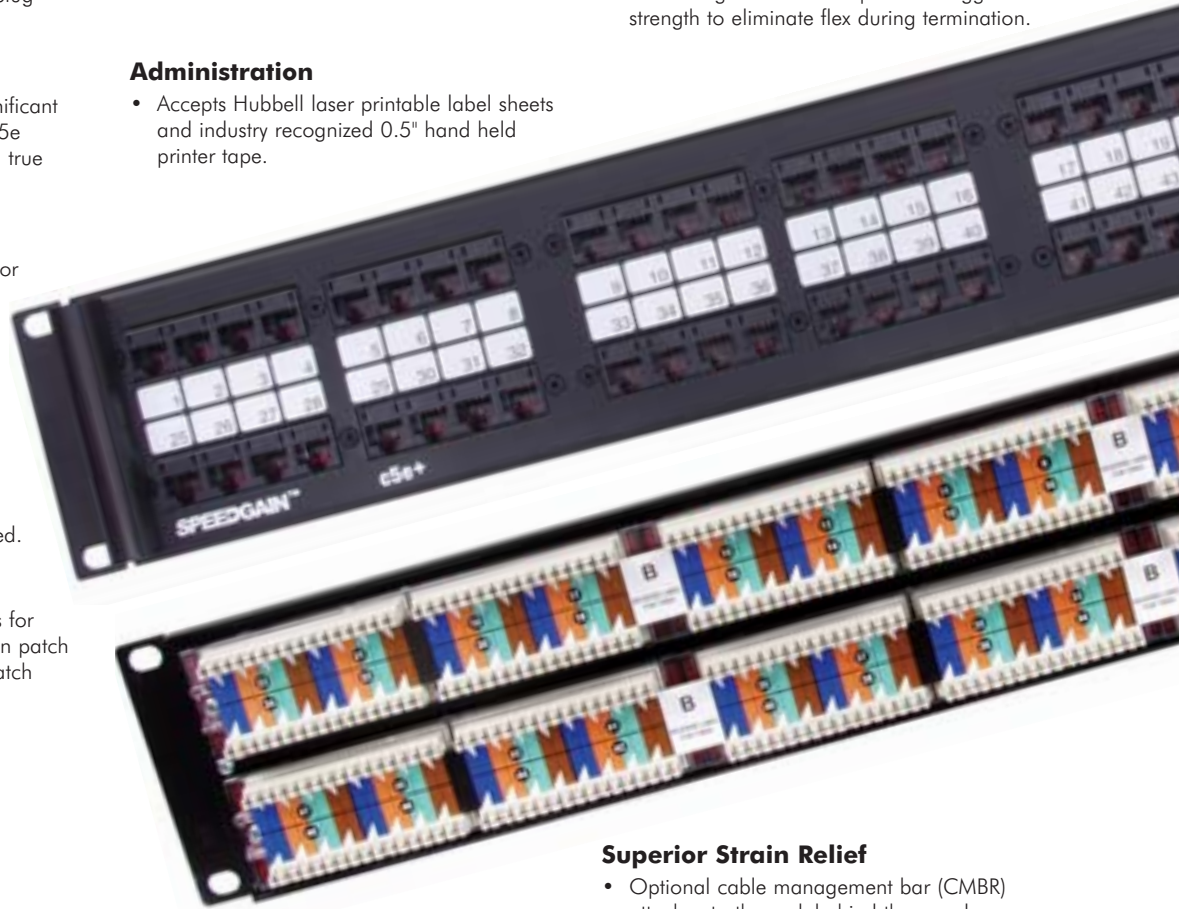
- TIA-568-C.2 Category 5e Component.
- ISO 11801 Class D Compliant Category 5e.
- IEEE 802.3at.
- UL Listed 1863.

Administration

- Accepts Hubbell laser printable label sheets and industry recognized 0.5" hand held printer tape.

Durability

- Rolled edge construction provides rugged strength to eliminate flex during termination.



Superior Strain Relief

- Optional cable management bar (CMBR) attaches to the rack behind the panel providing excellent strain relief.

Installation Ease

- Universal wiring panels can be terminated using T568B or T568A wiring formats.

HUBBELL Advantage

- Industry's Fastest Terminating Panel.
- Inline IDC Termination.
- 100% Factory Tested.
- Eco-Friendly Packaging Utilizes Recyclable Materials and Eliminates Excess Packing Waste.

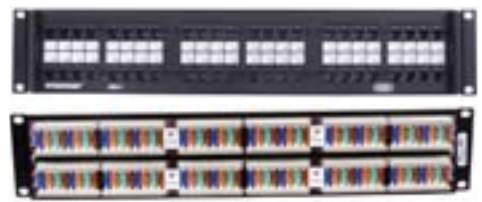


SPEEDGAIN® Universal Patch Panel, Category 5e

Ports	Height	Rack Units	Black Catalog No.	White Catalog No.	Black, Angled Catalog No.
16	1.75" (45)	1	P5E16UE	-	-
24	1.75" (45)	1	P5E24UE	P5E24UEW	P5E24AU
48	3.50" (89)	2	P5E48UE	P5E48UEW	P5E48AU
96	7.00" (178)	4	P5E96UE	P5E96UEW	-



P5E24UE



P5E48UE



SPEEDGAIN® Angled, Universal Patch Panel, Category 5e

Ports	Height	Rack Units	Catalog No.
24	1.75" (45)	1	P5E24AU
48	3.50" (89)	2	P5E48AU



P5E24AU



MUTOA, Category 5e

Features/Benefits

- Delivers Category 5e performance in a flexible format for open office and extended LAN applications.

Specifications

- The Category 5e CPB meets and exceed TIA-568-C-2 component specifications to 100 MHz.
- UL and cUL Listed.

Description	Catalog No.
Consolidation point block, 12-port, Category 5e, universal, 89D	P5E12U



P5E12U



Rear Cable Management Bars

Description	Catalog No.
Screws to rear flange of 19" rack.	CMBR
Holds each wire to maximize performance.	
Clips to rear of panels.	PCBLMGT



CMBR



PCBLMGT

HUBBELL iStation

Multimedia and Keystone Panels

Angled Design

- Eliminates the need for cable management allowing for more patch capabilities. Angle allows cable to flow into cable channels.

Superior Cable Strain Relief

- Optional cable management bar (CMBR) attaches to the rack behind the panel providing excellent strain relief.

Capacity

- Ideal solution where rack space is at an absolute premium, add-as-you-go flexibility, mixed jack performance, and color-coding are desired.

Administration

- Centered port identification allows for greater visibility of labels and clean patch cord organization.

Installation Ease

- Third hand location pin provides a hands-free installation. Simplifies rack layout.



Durability

- Rolled edge construction provides rugged strength to eliminate flex during termination.

iSTATION™ Design

- Front-loading iSTATION™ modules allow for X-END™ installation and Audio Video application modules.



Keystone Design

- Rear-loading Hubbell keystone feature simplifies installation, allowing for MACs and provides migration path.

Specifications

- ◆ Material: 16 ga. Cold Rolled Steel.
- ◆ Compatible with Hubbell Labeling Solution.
- ◆ Rear-loading keystone panels compatible with HPW keystone AV connectors.
- ◆ iSTATION™ panels compatible with all iSTATION™ modules.
- ◆ All panels accept Hubbell jacks.






Standards

- Complies with EIA-310-D rack mount standard.

HUBBELL Advantage

- Angle Panel Design Eliminates the need for Cable Management, Freeing Up Valuable Real Estate.
- Third Hand Helper Installation Aid.
- Panel Allows for Endless Audio Video and Data Applications.
- Eco-Friendly Packaging Utilizes Recyclable Materials and Eliminates Excess Packing Waste.

PXJ Jack Panel Kits, Loaded

	Height	Port Size	Jack Color	Category 5e Catalog No.	Category 6 Catalog No.
 PXJ624BKE	1U (1.75")	24	Black	-	PXJ624BKE
 PXJ624E	1U (1.75")	24	Gray	-	PXJ624E
 PXJ624BKE	1U (1.75")	36	Gray	-	PXJ636E
 PXJ5E48E1U	1U (1.75")	48	Black	PXJ5E48E1U	PXJ648BKE1U
 PXJ648E1U	1U (1.75")	48	Gray	-	PXJ648E1U
 PXJ648BKE	2U (3.50")	48	Black	-	PXJ648BKE
 PXJ648E	2U (3.50")	48	Gray	-	PXJ648E
 UDX245EIL*	1U (1.75")	24	Black	UDX245EIL*	UDX246IL*

* Loaded inline coupler panels





UDX Super, High-Density Panel

Description	Height	Port Size	Jacks	Catalog No.
UDX Jack Panel	1U (1.75")	48	Unloaded	UDX48E1U

NOTE: UDX48E1U only accepts XCELERATOR™ jacks.



UDX Multimedia Jack Panels, Unloaded

Style	Height	Port Size	Jacks Supplied	Color	Catalog No.
Wall Mount	-	12	Unloaded	Black	UDX1289*
Rack Mount	1U (1.75")	24	Unloaded	Black	UDX24E
Rack Mount	1U (1.75")	36	Unloaded	Black	UDX36E
Rack Mount	2U (3.50")	48	Unloaded	Black	UDX48E
Angled	1U (1.75")	24	Unloaded	Black	UDXA24
Angled	2U (3.50")	48	Unloaded	Black	UDXA48

* Pre-mounted on an 89D bracket.

NOTE: See page N27 in the Technical Section for UDX Panel compatibility chart.



UDX24E



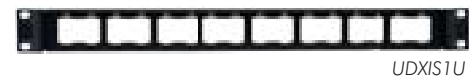
UDXA24

iSTATION™ Patch Panels, Front-Loading, Unloaded

Style	Height	Opening Size	No. of Total Units	Catalog No.
Flat	1U (1.75")	1 Unit	8-1 Unit Modules	UDXIS1U¹
Flat	2U (3.50")	3 Units	24-1 Unit Modules	UDXIS2U
Angled	1U (1.75")	1 Unit	8-1 Unit Modules	UDXAM16¹
Angled	2U (3.50")	3 Units	24-1 Unit Modules	UDXAM48

NOTE: See page B23 for a complete listing of iSTATION™ modules.

¹ NOTE: Use only iSTATION™ 1U modules - see page B23.



UDXIS1U



UDXAM48

Pro-AV Panel Mount Patch Panels, Unloaded

Style	Height	Opening Size	No. of Connectors	Catalog No.
Flat	1U (1.75")	Pro-AV	16	PAV16
Flat	2U (3.50")	Pro-AV	32	PAV32
Angled	1U (1.75")	Pro-AV	16	PAVA16
Angled	2U (3.50")	Pro-AV	32	PAVA32

Note: See page B18 for Pro-AV panel mount (XLR type) connector information.



PAV16



PAV32

Angled Blank Panels and Cover

Description	Height	Ports	Color	Catalog No.
Blank Panel	1U (1.75")	-	Black	ABP175
	2U (3.50")	-	Black	ABP350
				Catalog No.
Angled Panel Cover, Top/Bottom			Black	APC



ABP350



APC

NEXTSPEED® 6 Shielded Patch Panels, Unloaded

The NEXTSPEED® PSJ24 19" panels are a 1-rack unit 16-port or 24-port high-density unloaded patch panel.

Ports	Height	Rack Units	Catalog No. Black	Catalog No. Silver
16	1.75" (45)	1	UDX16E	-
24	1.75" (45)	1	PSJ24BK	PSJ24S

*Note: Order jacks separately - see page B6.



UDX16E



PSJ24S

Rear Cable Management Bars

Description	Catalog No.
Screws to rear flange of 19" rack.	CMBR
Holds each wire to minimize ANEXT and maximize performance.	PCBLMGT
Clips to rear of panels.	PCBLMGT



CMBR



PCBLMGT

HUBBELL SpeedGain

Gigabit Ethernet Panels

Design

- Gigabit Ethernet transmission, 100MHz.

Durability

- Rolled edge construction provides rugged strength to eliminate flex during termination.

Capacity

- 25-pair cable much smaller profile than equivalent 6-cable bundle of 4-pair UTP. Frees up valuable space in the cabinet and in the floor for maximum airflow.

Administration

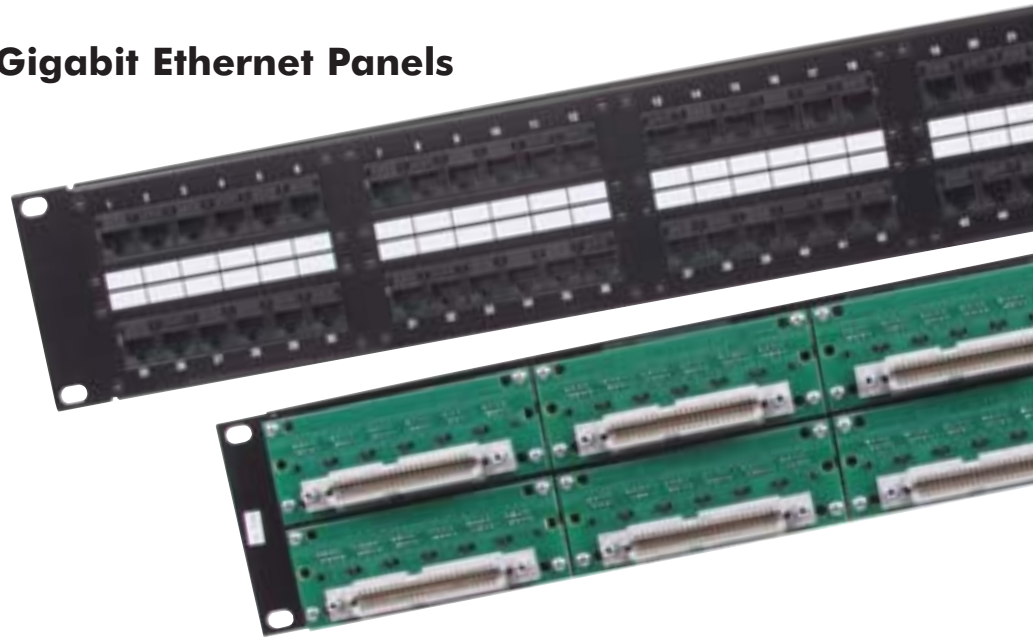
- Much easier to track and manage a single 25-pair cable versus six 4-pair UTP cables.

Reliability

- Application: Third-Party qualified for Gigabit Ethernet Transmission IEEE 802.3.
- Performance: Third-Party verified for TIA-568-C.2 Category 5e.
- Manufacturing: 100% factory tested.

Superior Cable Strain Relief

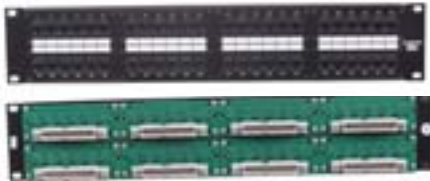
- Optional cable management bar (CMBR) attaches to the rack behind the panel providing excellent strain relief.



HUBBELL Advantage

- One of the Industry's Only Gigabit Ethernet Panels.
- 6 Port Installation Using 25-Pair Assemblies.
- Third-Party Tested and Verified.
- Eco-Friendly Packaging Utilizes Recyclable Materials and Eliminates Excess Packing Waste.

Gigabit Ethernet 100BASE-T Patch Panels



PG48

Delivery: 1 100BASE-T patch panel, 4 mounting screws, 4 cable assembly screws

Ports	Height	Width	Depth	Connectors	Catalog No.
24	1.75" (45)	19" (483)	1.2" (31)	Female	PG24
48	3.50" (89)	19" (483)	1.2" (31)	Female	PG48

Fast Ethernet 100BASE-T Patch Panels (Female 50-pin)



MCC48100BT19

Delivery: 1 100BASE-T patch panel, 4 mounting screws, 4 cable assembly screws

Ports	Height	Width	Depth	Connectors	Catalog No.
24	1.75" (45)	19" (483)	1.2" (31)	Female	MCC24100BT19
48	3.50" (89)	19" (483)	1.2" (31)	Female	MCC48100BT19

Category 5e, 25-pair Cable Assemblies



525PS2205E

525G2105E

Hubbell's 25-Pair cable assemblies are your enhanced interconnect solution for 10/100BASE-T Fast Ethernet or 1000BASE-T Gigabit Ethernet. Our 525PS cable assemblies are provided with 90°, 110° and 180° connectors in various lengths, allowing flexibility and customization at the interconnect.

Connector Angles	Gender	100BASE-T Catalog No.	1000BASE-T Catalog No.
180° to 90°	Male-to-Male	525PS21XXE*	525G21XXE*
180° to 180°	Male-to-Male	525PS22XXE*	525G22XXE*
180° to 110°	Male-to-Male	525PS23XXE*	-
110° to 110°	Male-to-Male	-	525G33XXE*

* Many lengths available - check with factory about specific length requirements.



Specialty Patch Panels

Design

- Center balanced to Category 5e and 6 plug specifications.

Durability

- Rolled edge construction provides rugged strength to eliminate flex during termination.

Installation

- Specialty panels are an ideal MUTOA solution and consolidation point where space is not available.

Reliability

- Application: Third-Party qualified for Gigabit Ethernet Transmission IEEE 802.3.
- Component: Third-Party qualified for Category 5e and 6 Component.
- Channel: Third-Party verified for ISO 11801 Class D/E Compliant.
- Manufacturing: 100% factory tested.

Installation Ease

- Universal wiring panels can be terminated using T568B or T568A wiring formats.

Superior Cable Strain Relief

- Optional cable management bar (CMBR) attaches to the rack behind the panel providing excellent strain relief.



- Patented Hinged Design (U.S. Patent No. 5,765,698).
- The Cable Management Panel on the Hinged, Fold Down Patch Panel Acts as a Bench Supporting the Panel During Termination.
- Third-Party Tested and Verified.
- Eco-Friendly Packaging Utilizes Recyclable Materials and Eliminates Excess Packing Waste.

Patch Panels, Front Access, Category 5e

Wiring	Ports	Height	Width	Depth	Catalog No.
T568B	12	2.5" (64)	10" (254)	1.5" (38)	P5E12BF
T568A	12	2.5" (64)	10" (254)	1.5" (38)	P5E12AF
T568B	24	3.5" (89)	19" (483)	1.5" (38)	P5E24BF
T568A	24	3.5" (89)	19" (483)	1.5" (38)	P5E24AF



Patch Panels, Hinged, Fold-Down, Category 6A, 6, and 5e

Wiring	Style	Ports	Height	Width	Depth	Category	Catalog No.
Universal	Wall	48	7.0" (177)	19" (483)	7.5" (190.5)	6A	P6A48UF
Universal	Rack	48	7.0" (177)	19" (483)	1.5" (38)	6A	P6A48UF19
Universal	Wall	48	7.0" (177)	19" (483)	7.5" (190.5)	6	P648UF
Universal	Rack	48	7.0" (177)	19" (483)	1.5" (38)	6	P648UF19
Universal	Wall	48	7.0" (177)	19" (483)	7.5" (190.5)	5e	P5E48UF
Universal	Rack	48	7.0" (177)	19" (483)	1.5" (38)	5e	P5E48UF19



P648UF19



P5E48BF



6-110 Connecting Block System

Field terminated patch plugs allow custom length patch cords to be assembled in the field.

Complete Hubbell Labeling Solution includes software, laser-printable sheets, and clear covers (order separately).

Features/Benefits

- Category 6 field terminated patch plugs allow custom length patch cords to be assembled in the field by utilizing a labor saving snap fit design.
- High-definition color coding and tip and ring identification make conductor placement easy.
- Versatile solution consisting of 64- and 192-pair wiring blocks, 4-pair connecting blocks, field termination kits, and a complete line of accessories.
- Cable access openings allow cables to be routed through the rear of the block directly to the point of termination.

Specifications

- ◆ Verified to exceed TIA-568-C.2 Category 6 component specifications.
- ◆ **Connecting Blocks**
Material: Polycarbonate UL 94V-0.
Contact material: Phosphor bronze.
Contact plating: lead-free tin.
Conductor type: Solid or stranded (7).
Conductor: Solid or stranded 26-22 AWG.
- ◆ **Wiring Blocks**
Material: Polycarbonate UL 94V-0.
Conductor: Solid or stranded 26-22 AWG.
- ◆ cUL and UL Listed.




HUBBELL Advantage

- Verified to Exceed TIA-568-C.2 Category 6 Component Specifications.
- Increased Pair Isolation on 6-110 Connecting Blocks Provide for Superior NEXT Performance.
- Cable Access Holes and Increased Channel Width Allows Jacketed Cable to be Close to Termination Helping to Maintain Proper Pair Twist.

Hlabel HUBBELL Compatible with
Hubbell Labeling System -
see page M8.

Field Termination Kits, 6-110

Field termination kits facilitate easy ordering and include everything needed to assemble and configure a complete 6-110 Category 6 cross connect field. Field Termination kits are available with 64- or 192-pair wiring blocks and appropriate number of 4-pair connecting blocks and port identification labeling.

Description	Catalog No.	
6-110/64-pair field termination kit with standoff legs	6110FTK64WL	✓10G
6-110/64-pair field termination kit without standoff legs	6110FTK64NL	✓10G
6-110/192-pair field termination kit with standoff legs	6110FTK192WL	✓10G



Termination Tool, 6-110/4-pair

This termination tool is designed to seat 6-110/4-pair connecting blocks and terminate/cut UTP cable on 6-110 wiring blocks.

Features/Benefits

- Cut designation on tool head aids proper orientation before termination.
- Ergonomic rubber handle.
- Head and blades remove easily for fast replacement.



Description	Catalog No.
Termination tool, 4-pair, 6-110 (includes head and blades)	6110MPPDT
Replacement tool head, 6-110 (includes labels)	6110MPPDT1

Field Terminated Patch Plugs

Delivery: 1 patch plug base, 1 patch plug cover, 1 cable tie.

Description	Catalog No.
Category 6, 6-110, 4-pair, yellow	6110FPP4PR



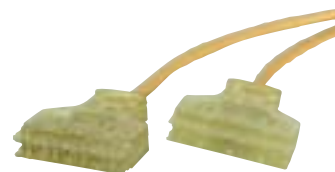
Factory Terminated Patch Cords

Delivery: 1 yellow patch cord

Length	Catalog No.	Catalog No.
	6-110 to 6-110	6-110 to RJ45 (T568B)
3'	6110PCL3	6119PCL3
5'	6110PCL5	6119PCL5
7'	6110PCL7	6119PCL7
9'	6110PCL9	6119PCL9
12'	6110PCL12	6119PCL12



When making a 6-110 to RJ45 cord, purchase Hubbell NEXTSPEED® PCX6 Patch Cords (see page D7) and cut cords in half. Then terminate the cut ends with 6-110 patch plugs.



Connecting Blocks, 6-110/4-pair

Hubbell Category 6, 4-pair connecting blocks are terminated to the wiring blocks utilizing a Hubbell 6-110/4-pair impact tool. Each connecting block features high definition color coding, tip and ring markings, and angled IDC towers to make conductor placement and lacing easy.

Description	Catalog No.
Connecting blocks, 6-110/4-pair	6110CB4PR10 ✓10G



Hubbell Labeling Solution

The Hubbell Labeling Solution 110 laser-printable label sheets and covers can be mounted between each wiring channel to identify individual station ports or pair counts. See page M8 for more information.

Description	Catalog No.
Laser-printable label sheets, 6-110 /110, white	XPL11010W
Laser-printable label sheets, 6-110 /110, yellow	XPL11010Y
Laser-printable label sheets, 6-110 /110, blue	XPL11010B



110 Connecting Block System, Category 5e

Field terminated patch plugs allow custom length patch cords to be assembled in the field.

High definition color coding and tip and ring designation make conductor placement and termination simple.

Complete Hubbell Labeling Solution includes software, laser-printable sheets, and clear covers (order separately).

Features/Benefits

- Provides a reliable, cost-effective, front terminated solution.
- Total interoperability with existing 110 systems.
- Flexible solution consisting of 50-, 100-, and 300-pair wiring blocks, 4- and 5-pair connecting blocks, and a complete line of accessories.

Specifications

- ◆ Verified to exceed TIA-568-C.2 Category 5e component specifications.
- ◆ **Connecting Blocks**
Material: Polycarbonate UL 94V-0.
Contact material: Phosphor bronze.
Contact plating: Lead-free tin.
Conductor type: Solid or stranded (7).
Conductor: Solid or stranded 26-22 AWG.
- ◆ **Wiring Blocks**
Material: Polycarbonate UL 94V-0.
Conductor: Solid or stranded 26-22 AWG.
- ◆ UL and cUL Listed.



 **HUBBELL**
Advantage

- Cable Access Openings Allow Cables to be Routed Through Wiring Blocks Directly to Point of Termination.
- Wiring Blocks Available With or Without Detachable Legs Which can be Removed During or After Termination.



Wiring Blocks, 110

Create a flexible, high density, 110 termination field for voice and data applications by mounting 110 wiring blocks to the wall or plywood backboard. Wiring blocks are available for 50- 100- and 300-pairs.

Description	Catalog No.
Wiring block, 110/50-pair with standoff legs	110BLK50BWL
Wiring block, 110/50-pair without standoff legs	110BLK50BNL
Wiring block, 110/100-pair with standoff legs	110BLK100BWL
Wiring block, 110/100-pair without standoff legs	110BLK100BNL
Wiring block, 110/300-pair with standoff legs	110BLK300BWL
Wiring block, 110/300-pair without standoff legs	110BLK300BNL



Field Termination Kits, 110

Kits include everything needed to configure a complete 110 cross connect field.

Description	Catalog No.
Field Term Kit, 110/50-pair with 4-pair blocks	110BLK50FTK4
Field Term Kit, 110/50-pair with 5-pair blocks	110BLK50FTK5
Field Term Kit, 110/100-pair with 4-pair blocks	110BLK100FTK4
Field Term Kit, 110/100-pair with 5-pair blocks	110BLK100FTK5
Field Term Kit, 110/300-pair with 4-pair blocks	110BLK300FTK4
Field Term Kit, 110/300-pair with 5-pair blocks	110BLK300FTK5



Termination Tool, 110/5-pair

110/5-pair tool is designed to seat 110 connecting blocks and terminate and cut UTP cable on 110 wiring blocks.

Description	Catalog No.
Termination tool, 110/5-pair (includes head and blades)	T5PPD110
Replacement tool head, 110/5-pair (includes blades)	T5PPD110H
Replacement tool blades, 110/5-pair	T5PPD110B



Field Terminated Patch Plugs

Delivery: 1 patch plug base, 1 patch plug cover, 1 cable tie.

Description	Catalog No.
Category 5e, 110, 4-pair, gray	110FPP4PR



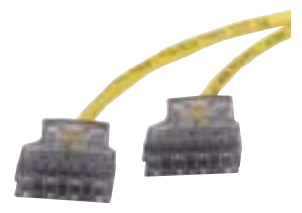
Factory Terminated Patch Cords

Length	Catalog No.	Catalog No.
	110 to 110	110 to RJ45 (T568B)
3'	PC110C5EL3	PC119C5EL3
5'	PC110C5EL5	PC119C5EL5
7'	PC110C5EL7	PC119C5EL7
9'	PC110C5EL9	PC119C5EL9
12'	PC110C5EL12	PC119C5EL12

* The standard color for the plugs of 110 patch cords is gray, however custom colors and lengths are available. Please consult Customer Service for price and availability at 1-800-626-0005.



When making a 110 to RJ45 cord, purchase Hubbell **SPEEDGAIN™** PCX5E Patch Cords (see page D7) and cut cords in half. Then terminate the cut ends with 110 patch plugs.



Connecting Blocks, 110

110 connecting blocks are terminated to the 110 wiring blocks using the 110/5-pair termination tool. Available in 4- and 5-pair sizes.

Description	Catalog No.
Connecting Blocks, 110/4-pair (kit of 10)	110CB4PR10
Connecting Blocks, 110/5-pair (kit of 10)	110CB5PR10



Hubbell Labeling Solutions - Cross Connect, 110/6-110

The Hubbell Labeling Solution 110 laser-printable label sheets and covers can be mounted between each wiring channel to identify individual station ports or pairs counts. See page M8 for more information.

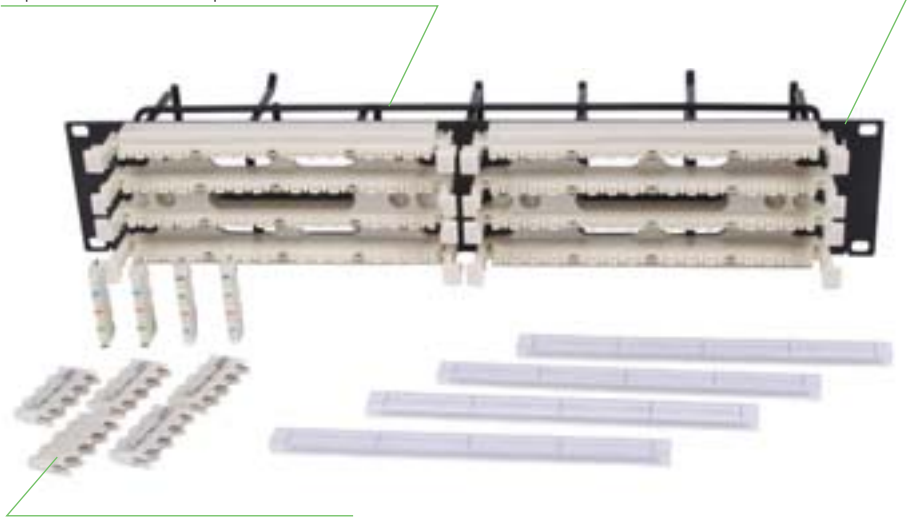
Description	Catalog No.
Laser-printable label sheets, 110/6-110, white	XPL11010W
Laser-printable label sheets, 110/6-110, yellow	XPL11010Y
Laser-printable label sheets, 110/6-110, blue	XPL11010B
Extra label holders (pack of 10)	XPH11010



Rack Mount Kits, 6-110 and 110

Optional rear cable organizer (HC36WF) clips to the rear of the panel.

Rolled edge construction provides superior strength during termination.



Increased Pair Isolation on 6-110 wiring and connecting blocks provides for superior NEXT performance.

Compatible with Hubbell Labeling Software and laser-printable 110 paper label sheets.



- Provides a cost effective, front terminated, high-density rack mount 110 solution.
- Cable access openings in wiring blocks allows cables to be routed through the block directly to the point of termination.
- Unique third hand locating pins hold panel in place on rack while installing screws.

Specifications

- ◆ 110 wiring bases and blocks are made of fire-retardant plastic rated UL 94V-0.
- ◆ Panel material: 14 ga. Steel.
- ◆ Finish: Durable black powder coat.
- ◆ Mounts directly to 19" EIA-310-D standard rack and cabinet.

Rack Mount Kits, 6-110, Category 6



Description	Rack Units	Catalog No.
Rack mount kit with troughs, 6-110, 128-pair	3U	6110RM1 ✓10G
Rack mount kit w/o troughs, 6-110, 128-pair	2U	6110RM1NT ✓10G

Rack Mount Kits, 110, with Cable Management, Category 5e



Description	Rack Units	Catalog No.
Rack mount kit, 100-pair with 4-pair connecting blocks	2U	110RM14
Rack mount kit, 100-pair with 5-pair connecting blocks	2U	110RM15
Rack mount kit, 200-pair with 4-pair connecting blocks	3U	110RM24
Rack mount kit, 200-pair with 5-pair connecting blocks	3U	110RM25

Rack Mount Kits, 110, without Cable Management, Category 5e



Description	Rack Units	Catalog No.
Rack mount kit, 100-pair with 4-pair connecting blocks	1U	110RM14NT
Rack mount kit, 100-pair with 5-pair connecting blocks	1U	110RM15NT
Rack mount kit, 200-pair with 4-pair connecting blocks	2U	110RM24NT
Rack mount kit, 200-pair with 5-pair connecting blocks	2U	110RM25NT



For wall mount applications, mount to Hubbell Wall Mount Hinged Brackets (see page G20). These brackets provide up to 8 inches of additional depth for added cable management.

Wall Mount Kits, 6-110 and 110



- Wall mount kits are supplied fully assembled with wiring blocks.
- Side access openings and cable tie-off points simplify cable management.
- Bottom cable trough (included) provides a large pathway at the base for routing cables horizontally.



Cable management troughs organize and protect the cables on the front of the frame.

Wiring blocks feature cable access openings allowing cables to be routed through the rear of the block directly to the point of termination.

Compatible with Hubbell Labeling Software and laser-printable label sheets.

Specifications

- ◆ Material: 110 wiring bases and blocks are made of fire-retardant plastic rated UL 94V-0.
- ◆ Tower material: Rugged 16 ga. Steel. Finish: Durable black powder coat.

Wall Mount Kits, 6-110/110

Delivery:	6-110	110	Description
	1	1	Wall mount tower frame
	1	1	Bottom cable trough
	3	-	6-110/64-pair wiring blocks without legs
	-	3	100-pair wiring blocks without legs
	48	-	6-110/4-pair connecting blocks
	-	60	110/4-pair connecting blocks
	-	12	110/5-pair connecting blocks
	3	3	Cable management troughs without legs
	6	6	Clear label holders
	6	6	White paper designation strips
Description			Catalog No.
Wall Mount Kit, Category 6, 6-110/192-pair			6110WMK ✓10G
Wall Mount Kit, Category 5e, 110/300-pair			110WMK



Cable Management Backboard

Delivery:	Qty.	Description	
	1	Wall mount cable management tower	
	1	Bottom cable trough	
	3	Cable management rings	
Description			Catalog No.
Cable management backboard			188BB ✓10G



Cable Management Troughs

Features/Benefits

- Provide horizontal patch cord management to complete a 110 or 6-110 cross connect solution.
- Install between wiring blocks to provide jumper and patch cord organization.

Specifications

- ◆ Material: Polycarbonate UL 94V-0.
- ◆ Prevents installed cables from exceeding the minimum bend radius requirements designated under TIA-568-A.



Description	Catalog No. With Legs	Catalog No. Without Legs
Cable management trough	110TRA ✓10G	110TRB ✓10G



Modular 66 Cross Connect Blocks



66M Block



HPW66M150C5

Features/Benefits

- Designed to fill the requirements for data distribution using familiar quick-clips for termination.
- Ability to transmit data rates up to 100 MHz.

Specifications

- ◆ With 4 slots on each row, there is flexibility for various configurations.

Description	Block Size	Capacity	Catalog No.
66M Block, Category 5 with cover	4 x 50	50-pair	HPW66M150C5
66M Block	4 x 25	25-pair	HPW66M125
66M Block	4 x 50	50-pair	HPW66M150
66M Cover	-	-	HPW66M150C5

66B Block



HPWB66B16

HPWB66B36

HPWB66B425

Features/Benefits

- Designed for fast and easy termination incoming telephone cables.
- The smaller connecting blocks satisfy the need for a block smaller than the 25-pair size.

Specifications

- ◆ Stackable for increased plant flexibility.

Description	Block Size	Capacity	Catalog No.
66B Block, Split (3x) (includes cover)	6 x 6	6-pair	HPW66B36
66B Block Cover for HPW66B425 + 350	-	-	HPW66BCVR
66B Block	6 x 12	6-pair	HPW66B16
66B Block 25-pair, Split (4x) HPW66B425	6 x 50	25-pair	
66B Block 50-pair, Split (4x)	6 x 50	50-pair	HPW66B350

12- and 16-port Blocks



BR258066A

Features/Benefits

- Supports installations not large enough to warrant a patch panel.
- Designed with printed circuit boards for consistent electrical performance.

Specifications

- ◆ Category 3 (12-port) performance listed by UL (89D bracket included).

Description	Wiring	Jack Openings	Capacity	Catalog No.
Modular 66 Block	T568B	12-8 pos. jacks	50-pair	BR258066A
Modular 66 Block	USOC-RJ25	16-6 pos. jacks	50-pair	BR256066A

Modular 66 Cross Connect Block Accessories



HPW66SPLB

HPW89D

HPW66BC100

HPW66BB

HPW66BBRKT

Features/Benefits

- Cable routing spools provide control and dressing of distribution cables and jumper wires - available with or without screws.
- Mounting holes are provided for use in a variety of mounting options.

Specifications

- ◆ Material: mounting brackets molded of durable self-extinguishing thermoplastic.

Description	Catalog No.
Cable routing spool without screw	HPW66SPLA
Cable routing spool with screw	HPW66SPLB
89B bracket (use to mount 66M series blocks)	HPW89B
89D bracket (use to mount 66M series blocks)	HPW89D
Backboard (blue - for 89D and 89B brackets) Includes 2-89B brackets as shown.	HPW66BB
66B Bracket (use to mount 66B series blocks)	HPW66BBRKT
Bridging Clip (0.5 x 0.25) (Pack of 100)	HPW66BC100

