



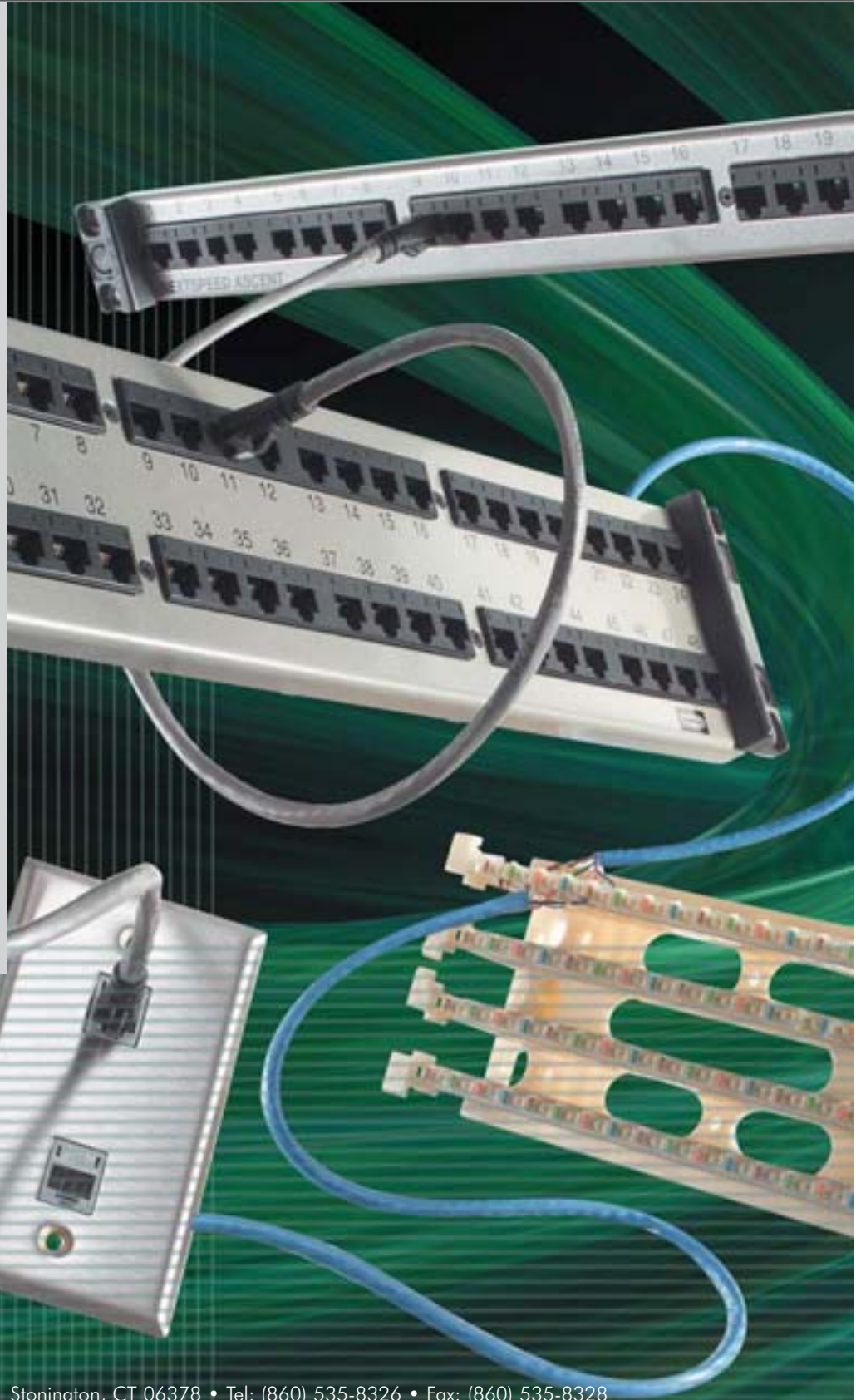
Channel Systems

Hubbell System Integration

Hubbell gives you true choice without compromising performance. All of our systems are standards based, open architecture. You can select a single brand end-to-end solution featuring Hubbell connectivity and Hubbell cable or mix and match Hubbell connectivity with cable from the industry's leading cable manufacturers.

Hubbell infrastructure systems are designed and developed to maximize system performance, without sacrificing reliability.

With Hubbell, your enterprise network operates with components that are third-party performance verified and backed by a 25-year **MISSION CRITICAL**® warranty. Hubbell stands behind both products and applications, even emerging technologies like PoE, because we understand that cabling infrastructure performance can impact the success of your enterprise.



FACE PLATES
 • CATEGORY
 CONSOLIDATION
 CATEGORY 6 SYS
 PRODUCTS
 • I- STATION P
 TOOL • JACK



CATEGORY 6 SYSTEMS • SHIELDED JACKS • SPEEDGAIN • 1-PUNCH TOOL • JAC
 TSPEED PRODUCTS • XCELERATOR JACKS • ASCENT 6E+ SYSTEM CHANNEL
 I- STATION PRODUCTS • FACE PLATES • PATCHCORDS • JACKS • CA
 SPEEDGAIN • 1-PUNCH TOOL • CATEGORY 5E SYSTEM CHANNEL • NEXTSPEED
 T 6E+ SYSTEM CHANNEL • CONSOLIDATION POINT BLOCKS • PATCH PAN
 JACKS • **SYSTEM CONTENTS** SHIELDED JACKS • SPEEDGAIN • 1-PUNCH
 CHANNEL • NEXTSPEED PRODUCTS • XCELERATOR JACKS • ASCENT 6E SYSTEM

PRODUCT	PAGE
NEXTSPEED® ASCENT CATEGORY 6A SYSTEM	A4
NEXTSPEED® SHIELDED CATEGORY 6/10GbE SYSTEM.....	A6
NEXTSPEED® 6 SYSTEM.....	A8
SPEEDGAIN® 5E SYSTEM.....	A10
OPTICHANNEL™ 10GbE SYSTEM.....	A12
I-FRAME® DATA CENTER.....	A14
I- STATION™ AV SYSTEM.....	A16
POWERTRAC® SYSTEM.....	A18
DELIVERY+ INTEGRATED DELIVERY SYSTEM.....	A22

Ascent Category 6A Channel
Design

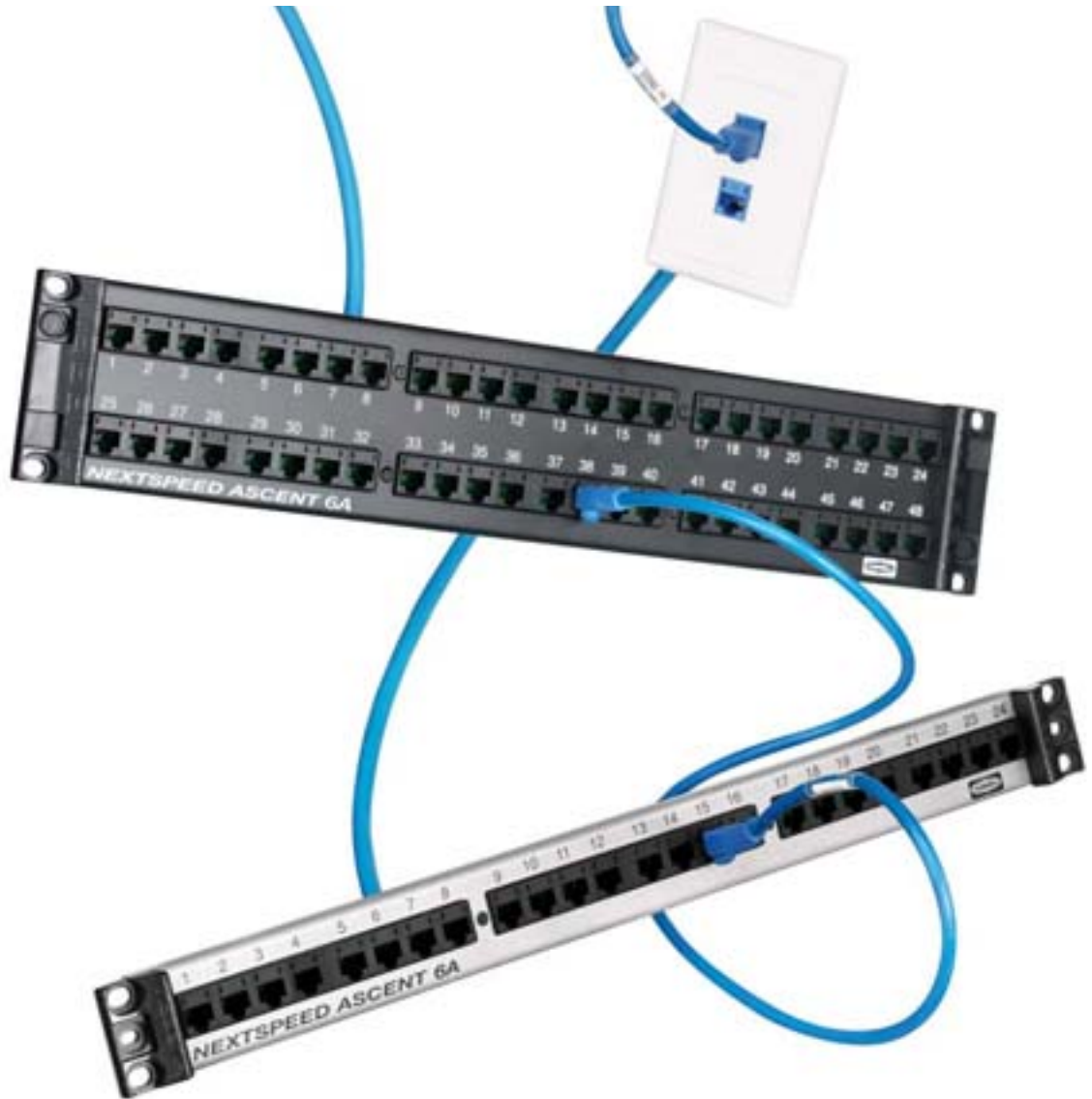
- Enhanced common mode design to eliminate residual and reflected NEXT.

Performance

- Balanced PCB design delivers 5dB+ headroom over the TIA Category 6A standard @ 500MHz providing true 10GbE application assurance.

Reliability

- Application: Third-Party qualified for 10GbE Transmission IEEE 802.3an.
- Component: Third-Party verified for TIA-568-C Category 6A Component Compliance.
- Channel: Third-Party verified for ISO 11801 Class E_A Compliant.
- Current Capacity: Qualified for PoE and PoE+ IEEE 802.3at.
- Manufacturing: 100% factory tested in a controlled environment.


Standards

- TIA-568-C.2 Category 6 Component Compliant.
- ISO 11801 Class E_A Compliant (Category 6A).
- IEEE 802.3at Compliant.
- UL Listed 1863.



- True TIA and ISO Category 6A Component Compliance.
- Labor Savings: Exclusive 1-Punch Termination Reduces Termination Time by 75%.
- Designed for Critical, Bandwidth Intensive 10 Gigabit Ethernet Applications.
- New Packaging Reduces Waste.

NEXTSPEED® Ascent Category 6A Jacks

The NEXTSPEED® Ascent Category 6A jack exceeds TIA and ISO Category 6A component specifications, delivering extended bandwidth and reliability for all LAN, multimedia and Power over Ethernet applications.

Delivery: 1 per Bag/Carton of 25. 25 per Bag/Carton of 1

Catalog No. **HJ6AXX** ✓10G Catalog No. **HJ6AXX25** ✓10G

XX = See Jack Color Options below.



XX = Jack Color Options

AL=Almond	BK=Black	B=Blue	EI=Electric Ivory	GL=Gold	GY=Gray	GN=Green	LA=Light Almond
OW=Office White	OR=Orange	P=Purple	R=Red	TI=Telco Ivory	W=White	Y=Yellow	

NEXTSPEED® Ascent, Category 6A, Component Patch Panels

Format	Width	Color	Catalog No.	
Standard	19" (483)	Black	HP6AXXU	✓10G
Standard	19" (483)	Silver	HP6AXXUS	✓10G
Angled	19" (483)	Black	HP6AXXAU	✓10G

Replace **"XX"** with port size: **"24"** = 24 ports; **"48"** = 48 ports.



HP6A48U



NEXTSPEED® Ascent Category 6A Patch Cords

Color: Gray

Catalog No. **PC6AGYXX** ✓10G

XX = Standard Color:

"B" = Blue; **"BK"** = Black; **"GY"** = Gray; **"Y"** = Yellow. For other colors replace color designation with one of the following: **OR** = Orange, **R** = Red, **GN** = Green, **P** = Purple, **W** = White

* = Standard Length:

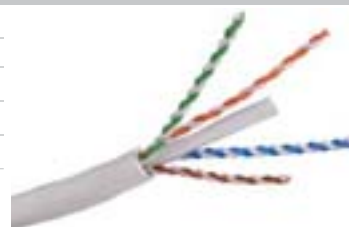
"03" = 3'; **"06"** = 6'; **"08"** = 8'; **"10"** = 10'; **"12"** = 12'; **"16"** = 16'; **"20"** = 20'.

MTO lengths: 25', 30', 35', 40', 45', 50', 55', 60', 75', and 100'.



NEXTSPEED® Ascent Category 6A Cable

Color	Catalog No.	Riser Spool (1000' length)	Catalog No.	Plenum Spool (1000' length)
Blue	C6ASRB	✓10G	C6ASPB	✓10G
Gray	C6ASRGY	✓10G	C6ASPGY	✓10G
White	C6ASRW	✓10G	C6ASPW	✓10G
Yellow	C6ASRY	✓10G	C6ASPY	✓10G



NEXTSPEED® Ascent Category 6A Trunk Cable Assemblies

BIDnet™ Pre-Terminated Cable Assemblies are Make-to-Order items. Please call our Inside Sales Team for lead-time and availability. ✓10G

- 100% tested.
- High performing factory terminations eliminate installation difficulties.
- Balanced, pre-terminated cable assemblies provide improved channel performance.



NEXTSPEED® Ascent Category 6A Field Termination Kits

Description*	Catalog No.	
64-Pair Kit with legs and 16 connecting blocks*	6110FTK64WL	✓10G
64-Pair Kit w/o legs and 16 connecting blocks*	6110FTK64NL	✓10G
192-Pair Kit with legs and 64 connecting blocks*	6110FTK192WL	✓10G

* 6-110, 4-pair connecting blocks.

See page E14 for more information.



HUBBELL NextSpeed

Category 6/10GbE Shielded System

Design

- IDC formation allows each pair to be segregated pair-to-pair NEXT.

Superior Strain Relief

- Locking IDC stuffer cap ensures termination retention, securing wires during installation.

Durability

- Die-cast construction provides superior durability for any shielded installation.

Performance

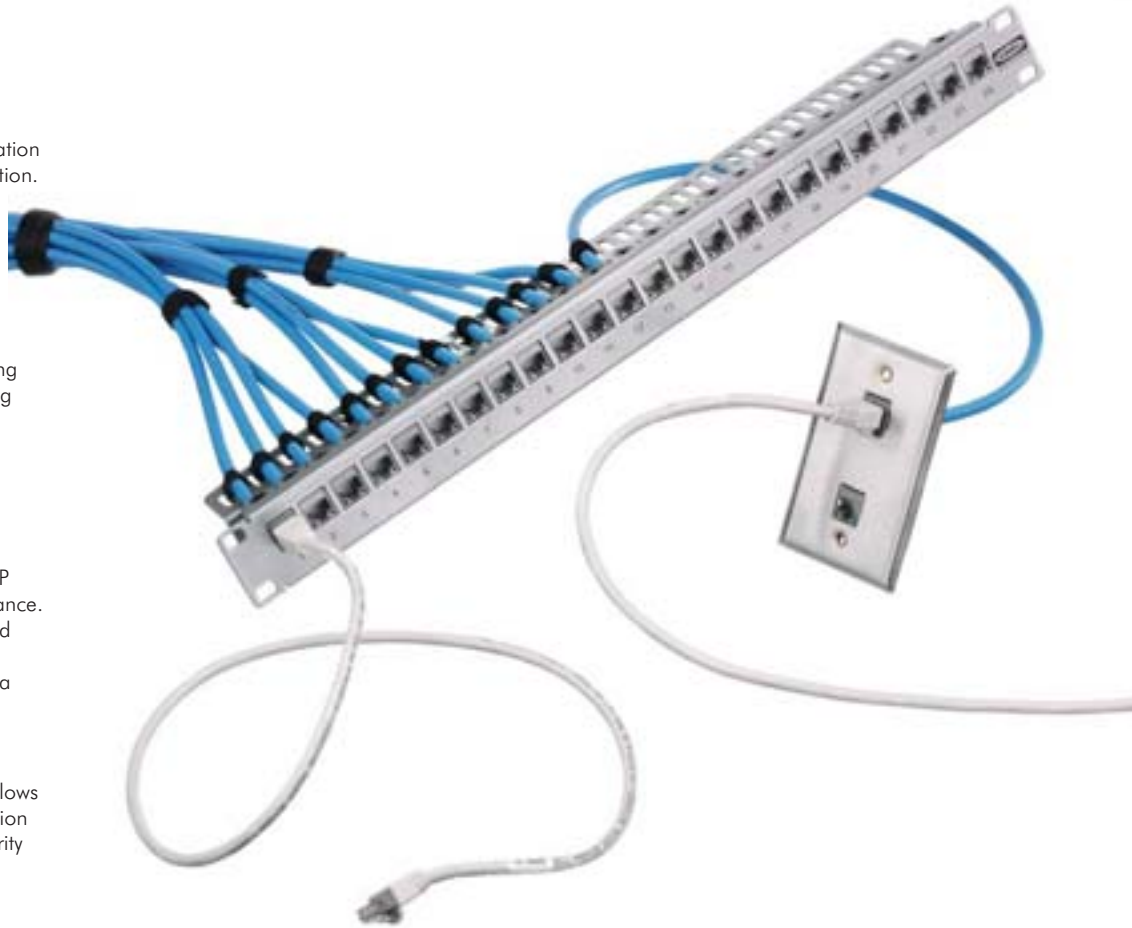
- Designed and center-balanced delivering 3dB of headroom @ 417MHz providing true 10GbE application assurance.

Reliability

- Application: Third-Party qualified for 10GbE Transmission IEEE 802.3an.
- Component: Third-Party verified for TIA-568-C Category 6 Component - 3P verified for ISO 11801 Class E compliance.
- Current Capacity: Qualified for PoE and PoE+ IEEE 802.3at.
- Manufacturing: 100% factory tested in a controlled environment.

Simplicity

- The unique tool less termination cap allows the cable to be laced in without disruption of the pairs, maintaining the twist integrity of the cable.



Specifications

- ◆ TIA-568-C.2.
- ◆ TIA-568-C.2-10 Draft Cat. 6A.
- ◆ IEEE 802.3at compliant.
- ◆ IEEE 802.3an 10GBASE-T Ethernet.
- ◆ UL Listed ISO/IEC 11801 (2nd edition) and EN50173.
- ◆ IEC 60603-7-5 specifications for Category 6 and Category 5e screened connecting hardware.

Standards

- ANSI/TIA-568-C Category 6 Component specifications.
- UL Listed ISO/IEC 11801 and EN50173 second edition requirements for transfer impedance and shield effectiveness.
- IEC 60603-7-5 (draft) specifications for Category 6 and Category 5e screened.
- UL Listed 1863.

 HUBBELL
Advantage

- Quick and Easy Terminal Grounding Connection.
- Tool Less Termination.
- Third Party Tested and Verified.
- Bulk Packaging Reduces Waste.



NEXTSPEED® Shielded Jacks, Category 6/10GbE

Category	Pckg. Quantity	B-Wired Catalog No.	A-Wired Catalog No.
6	2	SJ62B ✓10G	SJ62A ✓10G
6	24	SJ624B ✓10G	SJ624A ✓10G



NEXTSPEED® 6 Shielded Patch Panels, Unloaded

Ports	Height	Rack Units	Catalog No. Black	Catalog No. Silver
16	1.75" (45)	1	UDX16E	-
24	1.75" (45)	1	PSJ24BK	PSJ24S



UDX16E



PSJ24S

*Note: Order jacks separately - see above.



NEXTSPEED® Shielded Patch Cords, Category 6/10GbE

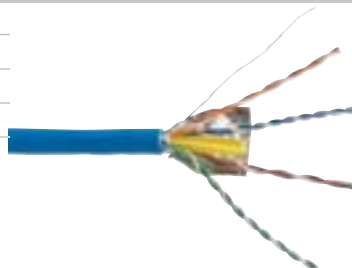
Length	Catalog No.	Length	Catalog No.
3'	PS603XX ✓10G	15'	PS615XX ✓10G
5'	PS605XX ✓10G	20'	PS620XX ✓10G
7'	PS607XX ✓10G	25'	PS625XX ✓10G
10'	PS610XX ✓10G		

XX=Color; B=Blue, GY=Gray



NEXTSPEED® Ascent 10GbE FTP Cable, 4-Pair

Color	Plenum Spool (1000' Length)	Riser Spool (1000' Length)
Blue	C6FTSPB ✓10G	C6FTSRB ✓10G
Gray	C6FTSPGY ✓10G	C6FTSRGY ✓10G
White	C6FTSPW ✓10G	C6FTSRW ✓10G



NEXTSPEED® Ascent Shielded Category 6 Trunk Cable Assemblies

BIDnet™ Pre-Terminated Cable Assemblies are Make-to-Order items. Please call our Inside Sales Team for lead-time and availability. ✓10G

- 100% tested.
- High performing factory terminations eliminate installation difficulties.
- Balanced, pre-terminated cable assemblies provide improved channel performance.



Category 6 System

Design

- Center balanced to Category 6 plug specifications.

Performance

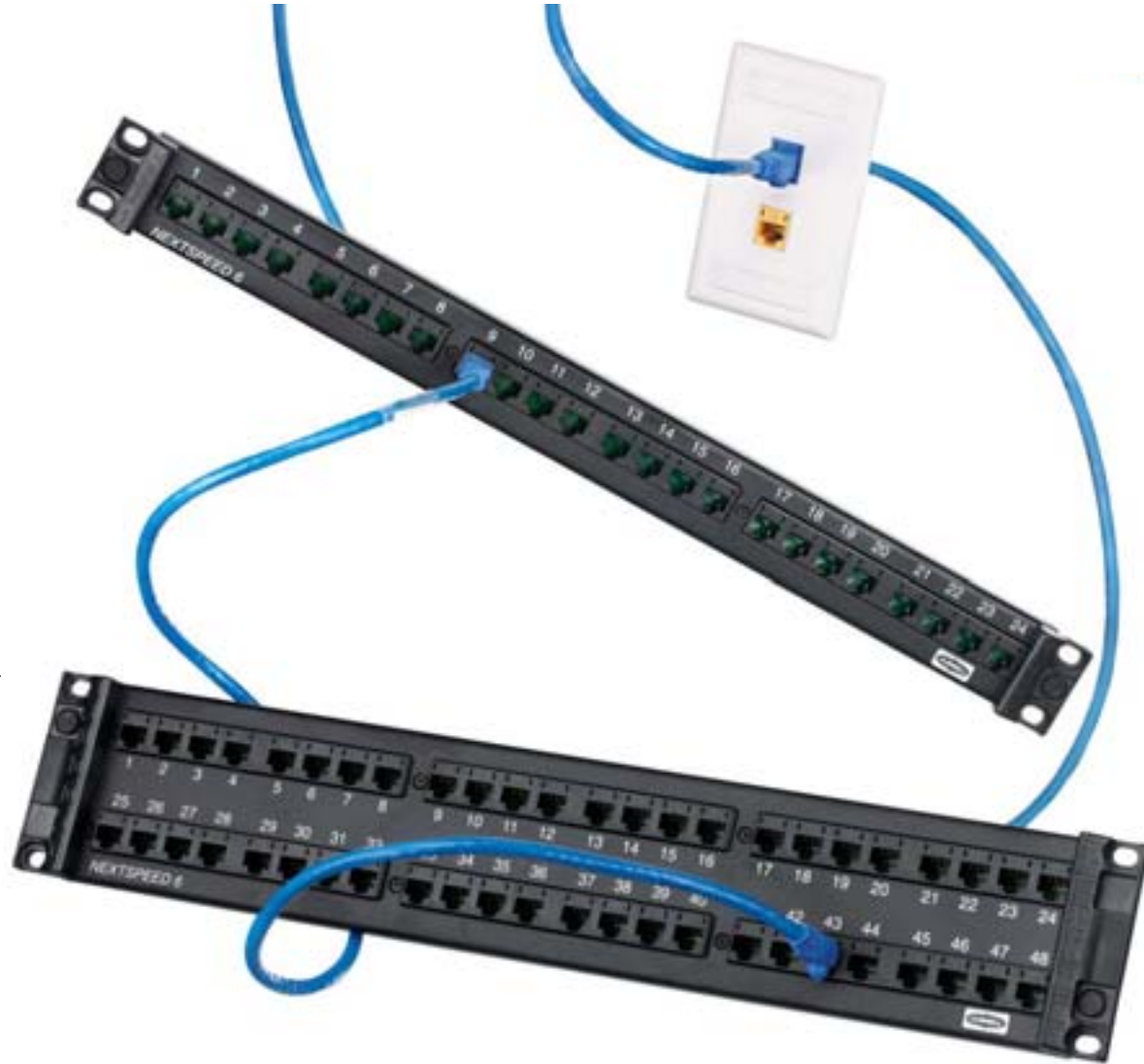
- Balanced PCB design delivers 6dB+ headroom over the TIA Category 6 standard @ 250MHz providing true application assurance.

Administration

- Accepts Hubbell laser printable label sheets and industry recognized 0.5" hand held printer tape.

Reliability

- Application: Third-Party qualified for 10GbE Transmission IEEE 802.3an.
- Component: Third-Party verified for TIA-568-C Category 6 Component Compliance.
- Channel: Third-Party verified for ISO 11801 Class E_A Compliance.
- Current Capacity: Qualified for PoE and PoE+ IEEE 802.3at.
- Manufacturing: 100% factory tested.



HUBBELL Advantage

Standards

- TIA-568-C.2 Category 6 Component.
- ISO 11801 Class E Compliant.
- IEEE 802.3at Compliant.
- UL Listed 1863.



- TIA Category 6 Component Compliance.
- Labor Savings: Exclusive 1-Punch Termination Reduces Termination Time by 75%.
- Third Party Tested and Verified.
- New Packaging Reduces Waste.



NEXTSPEED® Category 6 Jacks

Delivery: 1 per Bag/Carton of 25. 25 per Bag/Carton of 1
 Catalog No. **HXJ6XX** Catalog No. **HXJ6XX25**



XX = Jack Color Options

AL=Almond	BK=Black	B=Blue	EI=Electric Ivory	GL=Gold	GY=Gray	GN=Green	LA=Light Almond
OW=Office White	OR=Orange	P=Purple	R=Red	TI=Telco Ivory	W=White	Y=Yellow	



NEXTSPEED® Universal Patch Panel, Category 6

Format	Width	Color	Catalog No.
Standard	19" (483)	Black	P6EXXU
Standard	19" (483)	White	P6EXXUW
Angled	19" (483)	Black	P6XXAU



P6E48U

Replace "XX" with port size:
 "24" = 24 ports; "48" = 48 ports.



NEXTSPEED® Category 6 Universal Patch Cords

Delivery: 1 patch cord
 Catalog No. **PCX6XX***

XX = Standard Color:
 "B" = Blue; "BK" = Black; "GY" = Gray; "Y" = Yellow. For other colors replace color designation with one of the following: OR = Orange, R = Red, GN = Green, P = Purple, W = White.



* = Standard Length:
 "03" = 3'; "06" = 6'; "08" = 8'; "10" = 10'; "12" = 12'; "16" = 16'; "20" = 20'.
 MTO lengths: 25', 30', 35', 40', 45', 50', 55', 60', 75', and 100'.



NEXTSPEED® UTP Cable, Category 6, 4-Pair*

Color	Plenum Spool (1000' Length)	Riser Spool (1000' Length)
Blue	C6SPB ✓10G	C6SRB ✓10G
Gray	C6SPGY ✓10G	C6SRGY ✓10G
White	C6SPW ✓10G	C6SRW ✓10G
Yellow	C6SPY ✓10G	C6SRY ✓10G



Color	Plenum REELEX** (1000' Length)	Riser REELEX** (1000' Length)
Blue	C6RPB ✓10G	C6RRB ✓10G
Gray	C6RPGY ✓10G	C6RRGY ✓10G
White	C6RPW ✓10G	C6RRW ✓10G
Yellow	C6RPY ✓10G	C6RRY ✓10G

* Per TSB-155.
 ** REELEX is licensed and patented by Windings Inc.



NEXTSPEED® Ascent Category 6 Trunk Cable Assemblies

BIDnet™ Pre-Terminated Cable Assemblies are Make-to-Order items. Please call our Inside Sales Team for lead-time and availability.

- 100% tested.
- High performing factory terminations eliminate installation difficulties.
- Balanced, pre-terminated cable assemblies provide improved channel performance.



NEXTSPEED® Ascent Category 6 Field Termination Kits

Description*	Catalog No.
64-Pair Kit with legs and 16 connecting blocks*	6110FTK64WL
64-Pair Kit w/o legs and 16 connecting blocks*	6110FTK64NL
192-Pair Kit with legs and 64 connecting blocks*	6110FTK192WL

* 6-110, 4-pair connecting blocks
 See page E14 for more information.



HUBBELL SpeedGain Category 5e System

Design

- Gigabit Ethernet transmission, 100MHz.

Capacity

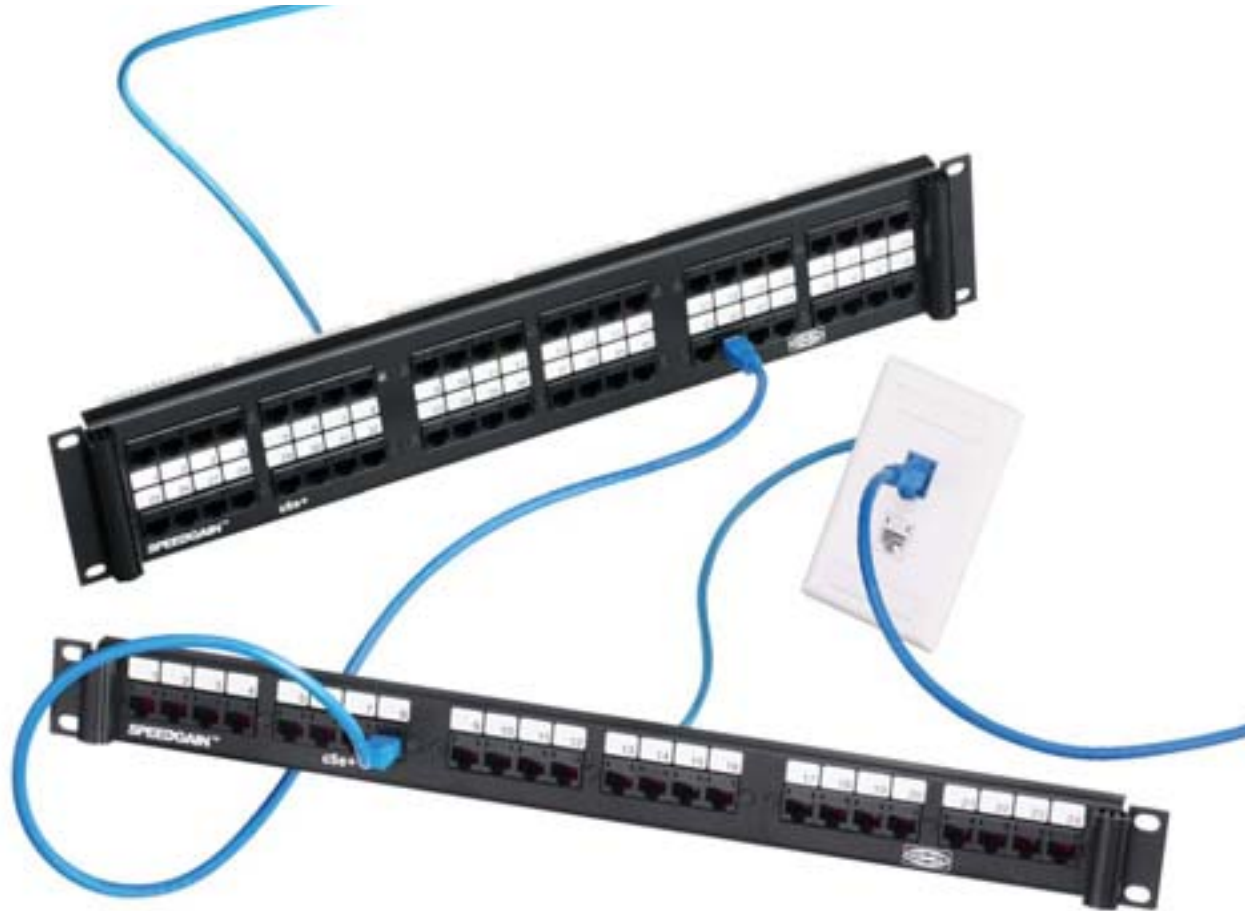
- 25-pair cable has much smaller profile than equivalent 6-cable bundle of 4-pair UTP. Frees up valuable space in the cabinet and in the floor for maximum airflow.

Performance

- Balanced PCB design delivers 9dB+ headroom over the TIA Category 5e standard @ 100MHz providing true application assurance.

Reliability

- Application: Third-Party qualified for Gigabit Ethernet Transmission IEEE 802.3ab.
- Component: Third-Party verified for TIA-568-C Category 5e Component Compliance.
- Channel: Third-Party verified for ISO 11801 Class D Component Compliance.
- Current Capacity: Qualified for PoE and PoE+ IEEE 802.3at.
- Manufacturing: 100% factory tested.



Standards

- TIA-568-C.2 Category 5e Component.
- ISO 11801 Class D Compliant.
- IEEE 802.3at.
- UL Listed 1863.



HUBBELL Advantage

- One of the Industry's only Gigabit Ethernet Panels (25-Pair).
- IDC and 25-Pair Termination.
- Third Party Tested and Verified.
- New Packaging Reduces Waste.



SPEEDGAIN® Category 5e Jacks

Delivery: 1 per Bag/Carton of 25. 25 per Bag/Carton of 1
 Catalog No. **HXJ5EXX** Catalog No. **HXJ5EXX25**



XX = Jack Color Options

AL=Almond	BK=Black	B=Blue	EI=Electric Ivory	GL=Gold	GY=Gray	GN=Green	LA=Light Almond
OW=Office White	OR=Orange	P=Purple	R=Red	TI=Telco Ivory	W=White	Y=Yellow	



SPEEDGAIN® Universal Patch Panel, Category 5e

Format	Width	Color	Catalog No.
Standard	19" (483)	Black	P5EXXU
Standard	19" (483)	White	P5EXXUW
Angled	19" (483)	Black	P5EXXAU



P5E48UE

Replace "XX" with port size:
 "24" = 24 ports; "48" = 48 ports.



SPEEDGAIN® Gigabit Ethernet Patch Panels

Ports	Height	Width	Depth	Connectors	Catalog No.
24	1.75" (45)	19" (483)	1.2" (31)	Female	PG24
48	3.50" (89)	19" (483)	1.2" (31)	Female	PG48



PG48



SPEEDGAIN® Category 5e Universal Patch Cords

Catalog No. **PCX5EXX***

XX = Standard Color: "B" = Blue; "BK" = Black; "GY" = Gray; "Y" = Yellow
 For other colors replace color designation with one of the following:
 OR = Orange, R = Red, GN = Green, P = Purple, W = White

* = Standard Length:
 "01" = 1'; "03" = 3'; "05" = 5'; "07" = 7'; "10" = 10'; "15" = 15'; "20" = 20';
 "25" = 25'; "30" = 30'; "35" = 35'; "40" = 40'; "45" = 45'; "50" = 50';
 "55" = 55'; "60" = 60'; "75" = 75'; "100" = 100'



SPEEDGAIN® Category 5E UTP Cable, 4-Pair

Color	Plenum Spool (1000' Length)	Riser Spool (1000' Length)
Blue	C5EPPB	C5EPSRB
Gray	C5EPPGY	C5EPSRGY
White	C5EPPW	C5EPSRW
Yellow	C5EPPY	C5EPSRY

Color	Plenum REELEX* (1000' Length)	Riser REELEX* (1000' Length)
Blue	C5EPRPB	C5EPRRB
Gray	C5EPRPGY	C5EPRRGY
White	C5EPRPW	C5EPRRW
Yellow	C5EPRPY	C5EPRRY



* REELEX is licensed and patented by Windings Inc.



SPEEDGAIN® Category 5e Trunk Cable Assemblies

BIDnet™ Pre-Terminated Cable Assemblies are Make-to-Order items. Please call our Inside Sales Team for lead-time and availability.

- 100% tested.
- High performing factory terminations eliminate installation difficulties.
- Balanced, pre-terminated cable assemblies provide improved channel performance.



SPEEDGAIN® Category 5e Field Termination Kits

Description	Catalog No.
50-pair termination kit with 4-pair blocks	110BLK50FTK4
100-pair termination kit with 4-pair blocks	110BLK100FTK4
300-pair termination kit with 4-pair blocks	110BLK300FTK4

See page E16 for more information.



HUBBELL OptiChannel

10GbE Fiber System

- 50 μ m, 10GbE compatibility.
- 10GbE 300 meter operation at 850 nm.
- 10GBASE-SR/SW applications.
- Wide variety of connector options.
- Numerous fiber adapter color arrangements.
- Modular product configurations.
- MTP cassettes and cables.



HUBBELL Advantage

Specifications

- ◆ ANSI/TIA-568-C.3.
- ◆ ISO/IEC 11801, 2nd Edition.
- ◆ AF-PHY-0110.0.
- ◆ IEEE 802.3ae.
- ◆ IEEE 802.3z.
- ◆ 2,000 MHz-Km effective mode bandwidth 50/125mm fiber in pigtails and patch cords.



- 10GbE Performance for Laser-Optimized 50 μ m Multimode Fiber Applications.
- Comprehensive Product Set.
- Modular Design for Easy Installation.
- Plug-n-Play Arrangements.
- Product Line Breadth Ensures that Solutions can be Tailored to Meet the Specific Needs of the User.
- Fiber's High Traffic Carrying Capacity per Volume Reduces Cabling and Improves Airflow.

Plug-n-Play Cassettes

Description	Catalog No.	
SC Duplex	OCSC50G	✓10G
LC Duplex	OCLC50G	✓10G
LC Quad	OCLCQ50G	✓10G



MTP to MTP Cords, 12 Fiber

Length	Catalog No.	
10	FPCMTP50G10	✓10G
25	FPCMTP50G25	✓10G
50	FPCMTP50G50	✓10G
100	FPCMTP50G100	✓10G

Other lengths readily available.



2CLICK® Pre-Polished Fiber Connectors

LC Connectors		
Description	Pack of 12	
Multimode, 50µm	FCLC50GM12	✓10G
ST Connectors		
Description	Pack of 12	
Multimode, 50µm	FCST50GM12	✓10G
SC Connectors		
Description	Pack of 12	
Multimode, 50µm	FCSC50GM12	✓10G



Fiber Adapters

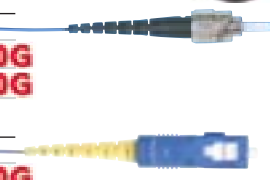
Description	Phosphor Bronze Sleeve		Zirconia Ceramic Sleeve	
	Catalog No.		Catalog No.	
SC Duplex	FASCEMPB6	✓10G	FASCDC6	✓10G
SC Simplex	FASCMPB12	✓10G	FASCSSC12	✓10G
SC to ST-style Duplex	FASTSCEMPB6	✓10G	FASTSCDC6	✓10G
SC to ST-style Simplex	FASCSTSEMPB12	✓10G	FASTSCSSC12	✓10G
LC Duplex	FALCMPB6	✓10G	FALCDC6	✓10G
LC Quad	FALCQMC6BL	✓10G	FALCQSC6	✓10G



* All adapters listed have snap mountings and are blue. See pages F12 and F13 for information on other color options and screw mount adapters.

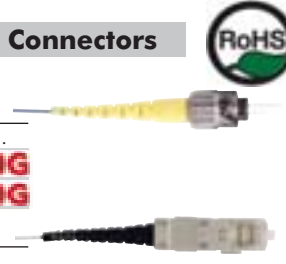
2QUICK® Crimp-style Connectors

2QUICK® ST-style Connectors		
Description	Pack of 12 Catalog No.	
Multimode	FCSTMQ12RA	✓10G
Singlemode	FCSTSQ12R	✓10G
2QUICK® SC Connectors		
Description	Pack of 12 Catalog No.	
Multimode	FCSCMQ12R	✓10G
Singlemode	FCSCSQ12R	✓10G



OPTICHANNEL™ Adhesive Connectors

OPTICHANNEL™ ST-style Connectors		
Description	Pack of 12 Catalog No.	
Multimode	FCSTM12R	✓10G
Singlemode	FCSTS12R	✓10G
OPTICHANNEL™ SC Connectors		
Description	Pack of 12 Catalog No.	
Multimode	FCSCM12R	✓10G
Singlemode	FCSCS12R	✓10G



OPTICHANNEL™ 10GbE Patch Cords

Description	Catalog No.	
SC to SC 50/125	DFPSCSCSEXMM	✓10G
LC to LC 50/125	DFPLCLCEXMM	✓10G
LC to SC 50/125	DFPLCSCSEXMM	✓10G

Replace 'X' with standard lengths of 1, 2, 3, or 5 meters.

OPTICHANNEL™ 10GbE Fiber Pigtaills

3m long		
Description	Catalog No.	
SC 50/125, Multimode	FPSCE3MM	✓10G
LC 50/125, Multimode	FPLCE3MM	✓10G



OPTICHANNEL™ Fiber Adapter Panels

Fiber Adapter Panels with Phosphor Bronze Sleeves				
Description	Capacity (# Fibers)	Catalog No.		
6 SC Duplex, Aqua	12	FSPSCDM6AQ	✓10G	
6 SC Duplex, Beige	12	FSPSCDBE6	✓10G	
6 SC Duplex, Blue	12	FSPSCD6	✓10G	
6 LC Quad, Aqua	24	FSPLCQM6AQ	✓10G	
6 LC Quad, Beige	24	FSPLCQM6BE	✓10G	
6 LC Quad, Blue	24	FSPLCQ6	✓10G	

Fiber Adapter Panels with Zirconia Ceramic Adapter

Description	Capacity (# Fibers)	Catalog No.		
6 SC Duplex, Blue	12	FSPSCDS6	✓10G	
6 SC Duplex, Red	12	FSPSCDS6R	✓10G	
6 SC Duplex, Yellow	12	FSPSCDS6Y	✓10G	
6 LC Quad, Blue	24	FSPLCQS6	✓10G	
6 LC Quad, Red	24	FSPLCQS6R	✓10G	
6 LC Quad, Yellow	24	FSPLCQS6Y	✓10G	

** See pages F10 and F11 for detailed information and additional configurations (panels with other adapter types, colors, and densities).

Multifiber Trunk Cables

Multifiber trunk cable assemblies are ordered using the Hubbell OPTICHANNEL™ Assemble-to-Order (ATO) program. Customers select from a wide variety of options, fiber type, cable length, and connector type, to ensure that the multifiber cable assembly purchased meets the specific needs of the application. More information about the multifiber trunk cable assemblies and the ATO program can be found on pages F16-F17.



HUBBELL

iFrame Data Center

- Reduce time to prepare for new servers.
- Reduce cable bulk and airflow in plenum space.
- Increase usable rack space per square foot of floor space.
- Factory-terminated and tested cable assemblies increase reliability.
- Modularity provides migration and scalability.
- System spans data distribution, power distribution and equipment racking components.

**Address Major Data Center Issues:**

Airflow



Administration



Response Time



Security



Space Utilization



Appearance



- Defined Pathways Eliminate Airflow Obstructions.
- Factory-Tested Plug-n-Play Components Minimize Installation Time.
- Modular Components Simplify Design and Execution.
- Stylized Look to Enhance the Appearance of the Equipment Room.



Premise Networking Cabinet

Premise Networking Cabinet with Sides

Rack Units	Height	Width	Depth	Catalog No.
45	84"	30"	32"	H1N84E
43	80"	30"	32"	H1N80E
45	84"	30"	36"	H1N84ED
43	80"	30"	36"	H1N80ED



Premise Networking Cabinet with Sides

Rack Units	Height	Width	Depth	Catalog No.
45	84"	23.94"	32"	H1N84X
43	80"	23.94"	32"	H1N80X
45	84"	23.94"	36"	H1N84XD
43	80"	23.94"	36"	H1N80XD

See page H10 for more information.

Server Cabinet

Server Cabinet with Sides

Rack Units	Height	Width	Depth	Catalog No.
43	80"	24"	36"	H1E80ED
43	80"	24"	42"	H1E80E
43	80"	24"	44"	H1E8044E



Server Cabinet with Sides

Rack Units	Height	Width	Depth	Catalog No.
43	80"	24"	36"	H1E80EDX
43	80"	24"	42"	H1E80EX
43	80"	24"	44"	H1E8044EX

See page H8 for more information.

iFRAME® Column System

iFRAME® Columns

Rack Units	Overall Height	Overall Height	Catalog No.	Application
19	3'	35.0"	IS3	w/o raised floor
45	7'	78.8"	IS7	w/o raised floor
45	8"	78.8"	IS7RF	raised floor up to 12"
45	7'	78.8"	IS7RF18	raised floor up to 18"
45	7'	78.8"	IS7RFM6	using M6 cage nuts
45	7'	78.8"	IS7E	rear columns for 4-post app.

See page H8 for more information.



NEXTFRAME® Rack with Z Channels

Rack Height	Rack Units	Cover	Finish	Catalog No.
7' (2134)	45	Hinged	Black	CS1976H
7' (2134)	45	Clip on	Black	CS1976
7' (2134)	45	Clip on	Aluminum	CS1976A

See page G5 for more information.



NEXTFRAME® Horizontal Organizers

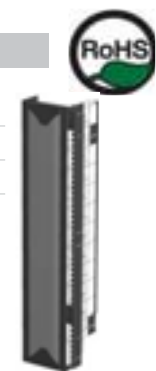
Rack Units	Panel Height	Front Ring Depth	Rear Ring Depth	Catalog No.
1U	1.75"	3.50"	-	HC119CE3H
2U	3.50"	3.50"	-	HC219CE3N
2U	3.50"	3.50"	4.6"	HC219CC3N
3U	5.25"	3.50"	-	HC319CE3N



XXL Series Vertical Organizers

Width:	6"W	10" W	15"W
Depth	Catalog No.	Catalog No.	Catalog No.
10"	XS0610	XS1010	XS1510
13"	XS0615	XS1515	XS1515

See page G7 for more information.



Vertical Organizers with Hinged Covers

Color	Height	6"W	4½"W	3¼"W
Black	7' (2134)	VS76H	VS74H	VS73H

See page G9 for more information.



Vertical Patch Panel for Hubbell Server Cabinet

Vertical Patch Panel

Data module locations:	15
Utility module locations:	42
Catalog No.	VPH

Data Modules

Data Modules	Catalog No.
10GbE, 6-port	VPPC6
1GbE, 25-pair	VPP1G
iSTATION™ Bezel	VPMI
iSTATION™ Module	IM2K1GY
Blank Covers	VPMB



Power Distribution

Horizontal Power Strips

Electrical Specs.	Outlets		Catalog No.
	Front	Rear	
15A/120V	0	10	HPWPWR
15A/120V	0	10	MCCPSS19
20A/120V	0	10	PR1020
60A/250V	0	10	PR0360



Vertical Power Strips

Electrical Specs.	Outlets	Circuits	Catalog No.
20A/120V	20	1	PR20620
30A/120V	20	1	PR20830
20/16A / circuit 120V	20	2	PR20820A
30/24A 250V	24	1	PR24
120V	40	6	PR40Z120



HUBBELL iStation Integrated Audio Video System

- Hubbell iSTATION™ system integration.
- Patent-pending X-END™ Plug-n-Play technology.
- Most extensive AV connection integration solution in the industry.
- Simple and consistent approach makes it very easy to design, specify and assemble.
- Maintains a uniform look.



Video Applications

- CATV, CCTV
- Composite: 480i
- S-Video: 480i, 576i
- Component: 720p, 1080i and 1080p
- RGBHV: VGA, SVGA, XGA, XGA+, SXGA, SXGA+, UXGA, QXGA
- HDMI 1080p

Connectors

- Audio
 - 3-pin XLR
 - 3.5mm Stereo Jack
 - 1/4" Stereo Jack
 - Speakon® Connector
 - Binding posts
- Video
 - RCA
 - S-Video
 - F-Connector
 - BNC Connector
 - HD-15
 - HDMI
 - DVI



HUBBELL Advantage

- Patent-Pending Plug-n-Play X-END™ AV System.
- First True Integrated AV System.
- Eliminates Field Termination on the Job Site.
- Supports Multiple Applications and Connector Configurations.
- Cable Assemblies Made-to-Length Eliminate Excess Cable.
- Utilize Same Cabling Infrastructure for Multiple Applications.

RCA Connectors



110 Punch Down
Housing: Black
Insulator: Blue, Green, Red, White, Yellow.
SFRC110XX



Gold Pass-Thru F/F
Housing: Office White
Insulator: Black, Red, White, Yellow.

SFRCXXFF
Housing: Office White
Insulator: Blue, Green, Orange.

SFRCXXFFOW
Housing: See Chart (except Office White)
Insulator: See Chart
SFRCXXFFXX



RCA Solder
Housing: Office White
Insulator: Black

SFRC
Housing: Office White
Insulator: Blue, Green, Orange.

SFRCXXOW
Housing: Office White
Insulator: Red, White, Yellow.

SFRCXX
Housing: See Chart (except Office White)
Insulator: See Chart

SFRCBXXXX

XX = Insulator Color:



Gold Pass-Thru F/F, Recessed
Housing: See Chart
Insulator: See Chart
SFRCXXRXX

S-Video Connectors



S-Video to 110
Housing: See Chart*
SFSV110XX



S-Video Pass-Thru
Housing: See Chart*
SFSVXX

* All colors available except for Lt. Almond.

USB Connectors



A to A, 2.0
Blue **SFUSBAAB**
Office White



A to B, 2.0
Blue **SFUSBABB**
Office White

SFUSBAAOW
White **SFUSBAAW**

SFUSBABOW
White **SFUSBABW**

Stereo Jack Connectors



3.5mm Solder
Housing: See Chart
SF35SJXX



3.5mm Screw Term
Housing: See Chart
SF35STXX



Pass-Thru, F/F
Housing: See Chart
SF35FFXX Nickel
SF35GFFXX Gold



1/4" Solder
Housing: See Chart
SF14SJXX

Pro-AV Connectors



1394 FireWire, Feed-Thru
10-pk **139410**



1/4" Locking Stereo, Solder
10-pk **14510**



2-pole Speakon®, Solder
10-pk **SC10**



XLR 3-pole, Solder
10-pk **XLR10**



XLR, 3-pole, Screw Term
10-pk **XLRST10**



USB, A-to-B Feed-Thru
10-pk **USB10**



Pro-AV Blank Module, 1.5 Unit Module: See Chart
IMAVB15XX

9-/15-pin Connectors



Screw Terminal
9-pin 10-pk **9ST10**
15-pin 10-pk **15ST10**



Gender Changer
9-pin 10-pk **9GC10**
15-pin 10-pk **15GC10**



Gender Changer, 15-pin, 90°
1-pk **15901**
10-pk **159010**

HDMI Couplers



HDMI Coupler
Gold, Female-Female
1-pk **HDMIC1**
10-pk **HDMIC10**



HDMI 3" Tail
Gold, Female-Female
1-pk **HDMIT1**
10-pk **HDMIT10**



DVI to HDMI Adapter, Female-to-Female
1-pk **DVIHDMI1**

VGA Plug-n-Play 15-pin to 8-pin Connections



Quantity
1-Pack
10-Pack

Straight 180°
15S6P1
15S6P10



Angled 45°
15A6P1
15A6P10



Angled 90°
15N6P1
15N6P10



8" Tail
15T6P1
15T6P10

DVI Adapters/Couplers



DVI-I Coupler
1-pk **DVI1**
10-pk **DVI10**



DVI to VGA Adapter
Female-Female
1-pk **DVI151**



DVI to HDMI Adapter
1-pk **DVIHDMI1**

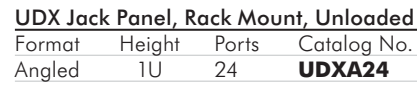


DVI Blank, Unloaded, 1.5 U
1-pk **IMBDVI15XX**
10-pk **IMBDVI1015XX**

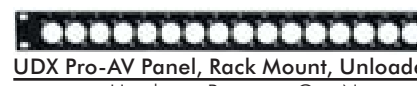
Multimedia Panels



iSTATION™ Panel, Rack Mount, Unloaded			
Format	Height	Ports	Catalog No.
Angled	1U	16	UDXAM16
Angled	2U	48	UDXAM48
Flat	1U	16	UDXIS1U
Flat	2U	48	UDXIS2U



UDX Jack Panel, Rack Mount, Unloaded			
Format	Height	Ports	Catalog No.
Angled	1U	24	UDXA24
Angled	2U	48	UDXA48
Flat	1U	16	UDX16E
Flat	1U	24	UDX24E
Flat	1U	36	UDX36E
Flat	1U	48	UDX48E1U
Flat	2U	48	UDX48E



UDX Pro-AV Panel, Rack Mount, Unloaded			
Height	Ports	Cat. No.	
1U	16	PAV16	
2U	32	PAV32	

XX = Color Options

AL=Almond	BK=Black	EI=Electric Ivory	GY=Gray	LA=Light Almond
OW=Office White	W=White			

HUBBELL PowerTrac System

10GbE Performance¹.
 PoE - Up to 20 Watts/Port.
 Flexible and Redundant
 Power Arrangements.
 Advanced PoE Power
 Management.
 Intelligent Managing,
 Tracking, and Securing
 of Assets.



Specifications

- ◆ IEEE 802.3af².
- ◆ Category 6 Performance (TIA-568-C.2).
- ◆ 10GbE Performance¹.
- ◆ 19" rack mountable.
- ◆ Advanced PoE power management using web based Graphical User Interface (GUI) or SNMP v1/v2c/v3.
- ◆ User-friendly software for Asset Management applications.
- ◆ UL 60950.
- ◆ cUL.
- ◆ FCC Part 15 Class A.
- ◆ VCCI.
- ◆ EN55022, EN61000-3-2, EN61000-3-3, and EN55024.

HUBBELL Advantage

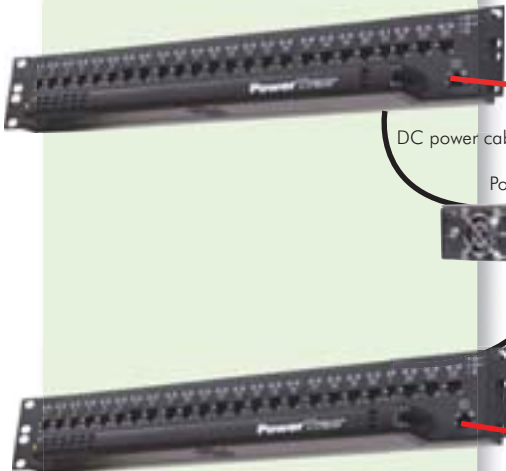
- Integrated PoE, 10GbE Performance¹, and Asset Management Functionality.
- Modular Architecture Allows Easy Installation and Maintenance.
- Local and Remote Management Features.
- Application Flexibility Ensures that the Optimal Configuration can be Deployed.
- Scalable for Future Expansion.

¹ 10GbE performance per TSB-155.

² The IEEE 802.3-2005 section 33 supersedes and incorporates the contents of 802.3af. References to 802.3af are used solely for convenience and consistency with existing specifications and documentation.



Patch Panel



- 24-port Patch Panel.
- Terminates horizontal cable via standard 110 punch-down connection.
- Standard RJ45 connectors on the front of the panel (for connection to the switch).
- Full PoE power to all ports for applications with compliant IEEE 802.3af² and some legacy 48VDC devices.
- Supports application up to 20 watts per port (requires Command Module).
- 10GbE performance¹.
- LED indicators display connection and power status.
- Universal wiring.
- Front cable management bar (optional).

Power Supply Chassis



- Supports the powering of up to 2 patch panels (48 ports).
- Can be front or rear mounted. With the rear mounting arrangement, the chassis is mounted directly in back of the patch panel to conserve space.
- Can be equipped with up to three (3) 350W/48VDC power supplies to provide the required level of redundancy or for additional power.
- AC input allows easy connection to UPS.
- 120/240VAC compatible.
- IEC 320 AC inlet power connection.
- Includes 6' power connection cable, IEC 320 C13 to NEMA 5-15P.

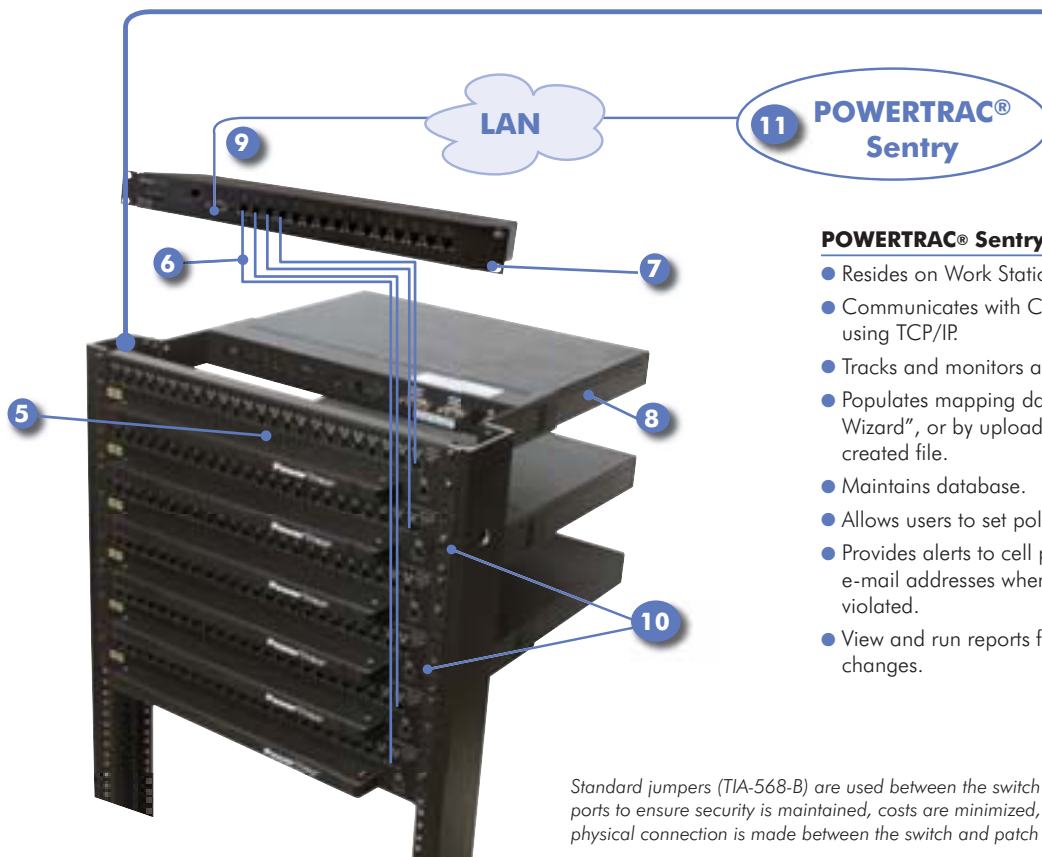
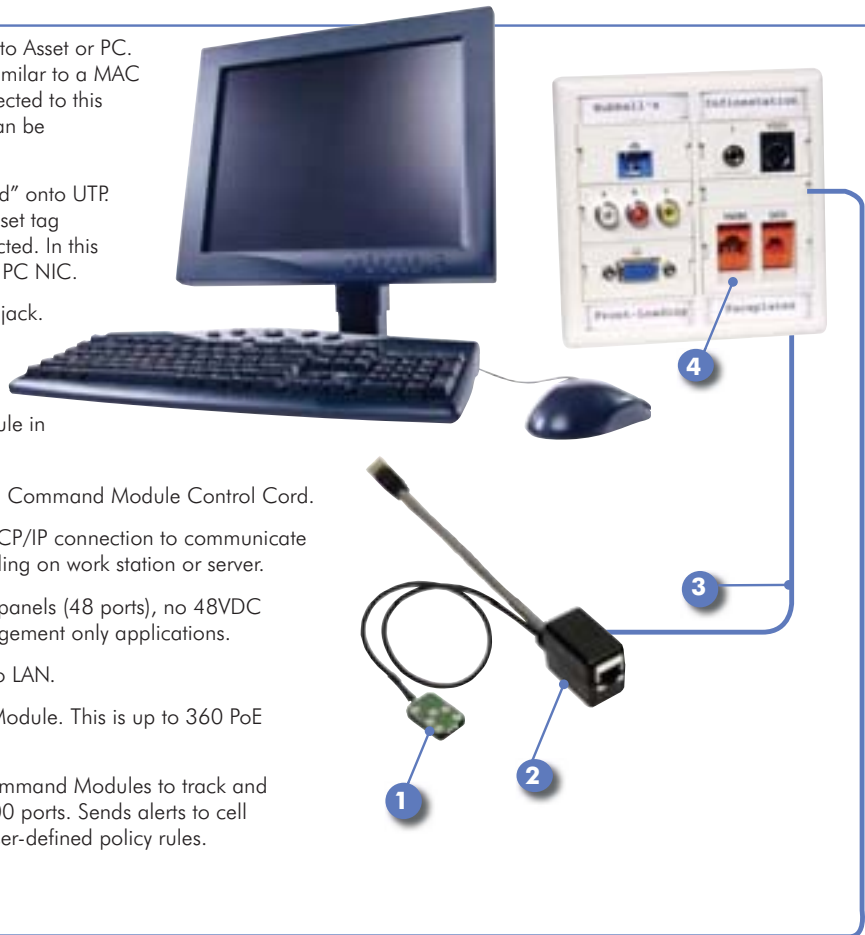
Command Module (Optional)



- Capability to set maximum PoE power to 20 watts per port.
- Allows for management of up to 15 panels, 360 enabled PoE ports, as a single IP stack (identity) dramatically reducing IP address consumption and network management traffic.
 - User-defined static IP address or DHCP.
 - Management and communication access via 10/100 LAN and Serial (RS-232) interfaces.
 - Direct links from Command Module to each panel (no daisy-chaining).
- Advanced PoE power management using web based Graphical User Interface (GUI) or SNMP v1/v2c/v3.
 - Set PoE power levels and service priorities on a port by port basis.
 - Police the powering of ports.
 - Remotely cycle PoE power for a port/ports.
- E-mail notifications for loss of communications and for various power conditions.

Asset Management Components

1. One Electronic Asset Tag (EAT) permanently affixed to Asset or PC. The asset tag has a unique pre-assigned number (similar to a MAC address). If desired, a tether extension can be connected to this asset tag so that another device, up to 2 devices, can be monitored over one UTP cable.
2. EAT Coupler allows asset tag number to be "injected" onto UTP. A proprietary communication channel is used for asset tag monitoring, to ensure that network traffic is not affected. In this example, the end of the coupler is plugged into the PC NIC.
3. Standard patch cord connects EAT Coupler to wall jack.
4. Work station outlets: **NEXTSPEED®** jacks tested to 4X required PoE current capacity.
5. Asset information read by Asset Management Module in panel and sent to serial bus.
6. Asset information relayed to Command Module via Command Module Control Cord.
7. Command Module collects information and uses TCP/IP connection to communicate information to **POWERTRAC®** Sentry software residing on work station or server.
8. Power Supply Chassis, each chassis serves up to 2 panels (48 ports), no 48VDC power supply modules are required for asset management only applications.
9. Standard RJ45 cord connects Command Module to LAN.
10. Up to 15 Patch Panels served by each Command Module. This is up to 360 PoE enabled ports and 720 managed assets.
11. **POWERTRAC®** Sentry Software, interfaces with Command Modules to track and monitor up to 800,000 asset tags on up to 500,000 ports. Sends alerts to cell phones, pagers, and e-mail addresses based on user-defined policy rules.


POWERTRAC® Sentry Software

- Resides on Work Station or Server.
- Communicates with Command Modules using TCP/IP.
- Tracks and monitors assets.
- Populates mapping data using "Location Wizard", or by uploading data from user created file.
- Maintains database.
- Allows users to set policy alert rules.
- Provides alerts to cell phones, pagers, and e-mail addresses when a policy rule is violated.
- View and run reports for status and event changes.

Standard jumpers (TIA-568-B) are used between the switch and the patch panel ports to ensure security is maintained, costs are minimized, and a standard physical connection is made between the switch and patch panel ports.

POWERTRAC® Patch Panels, 24-Port

Equipped for PoE and Asset Management <i>Delivery: 1 panel equipped with both PoE and Asset Management modules</i>	DTX24AP2
Equipped for PoE, Asset Management Ready <i>Delivery: 1 panel equipped with a PoE module</i>	DTX24P2
PoE Only, Equipped for PoE <i>Delivery: 1 panel equipped with a PoE module¹</i>	DTX24P¹
Equipped for Asset Management, PoE Ready <i>Delivery: 1 panel equipped with an Asset Management module</i>	DTX24A2
PoE and Asset Management Ready <i>Delivery: 1 panel (blank), no modules</i>	DTX24B2
Asset Management Module	DTXMA2
PoE Module	DTXMP



DTX24AP2 front

DTX24AP2 rear

POWERTRAC® Patch Panel Accessories

Power Supply Chassis Includes 5 VDC power supply module (DTXPM60), and a 6' AC power connection cable (IEC 320 C13 to NEMA 5-15P).	DTXPS
Power Supply Modules 5 VDC (for replacement) 48 VDC/350 watt (for PoE applications)	DTXPM60 DTXPM350
DC Power Cables Length: 3' Length: 7'	DTXP03 DTXP07
Command Module Includes AC power connection cable (IEC 320 C13 to NEMA 5-15P) and SD memory card.	DTXCM
Command Module Firmware License for Asset Management One license is required for each Command Module used in an asset management application.	DTXCML²
Command Module Control Cords Length: 3' Length: 7' Length: 10'	DTXCC03 DTXCC07 DTXCC10
Electronic Asset Tag Coupler Includes 1 EAT coupler and connection cable.	DTXD
Electronic Asset Tag (for replacement in the DTXD)	DTXT
Asset Tag Extension Cable with Tether Assembly Length: 1' Length: 3' Length: 5'	DTXTE01 DTXTE03 DTXTE05
Electronic ID Key	DTXK
POWERTRAC® Sentry Software Required for Asset Management applications.	DTXSN2ADM²
Cable Management Front (Optional)	DTXCMB
Optional Power Cables 18" IEC 320 C14 to IEC 320 C13 cord 18" NEMA 5-15P to IEC 320 C13 cord 30" NEMA 5-30P (TWIST-LOCK®) to IEC 320 C13 cord	ICKXA ICKXB ICKXC



DTXPS with 3 x DTXPM350

DTXPM60, DTXPM350

DTXCM

DTXD

DTXCC07

DTXCMB

¹ DTX24P is a PoE only panel and does not support asset management functionality.

² Only available from authorized Hubbell resellers.

HUBBELL
Delivery+

Integrated Delivery Systems



As the edge of the network reaches beyond the office area and responsibilities of the IT department expand, the role of the work area outlet evolves. In addition to providing a network connection, work area outlets now demand connections for audio video and power. Many work area outlets also need to be located outside of the typical office environment in unique locations such as auditorium podiums or conference tables. Putting the right connections in the right places isn't always easy.

Now Delivery+ can do just that in two steps!

First: standardize on a system that has the broadest offering of AV, data and voice connectors in a universal form factor.

Second: make sure the system offers a wide array of delivery options from poured concrete to furniture tops and raised access flooring.

Delivery+ adapts effortlessly to mount AV connectors in hundreds of different products. The flexibility of the system is so simple, just add an **iSTATION™** module, **X-END™** connection, AV keystone connector or jack to the interface. Hubbell's combined systems deliver the right connections in the right places essential for the emerging AV applications.

Delivery+ provides a Simple and Consistent approach and makes it very easy to design, specify and assemble thousands of different AV and data variations into countless mounting options and still maintain a uniform look.



14 Lord's Hill Road • Stonington, CT 06378 • Tel: (860) 535-8326 • Fax: (860) 535-8328

HUBBELL Advantage

- Patented Hubbell SystemOne Fire-Rated Poke-Through and Floor Box System.
- Simplifies Installation at the Job Site.
- Supports Multiple Applications and Connector Configurations.
- Delivery+ Aids in the Implementation of a LEEDS Friendly, Open Office Environment.





Hubbell Raceway Systems

Hubbell's innovative Raceway Systems include a choice of Steel, Aluminum and Non-Metallic, single or multi-channel raceways in addition to a quality line of color-matching power and datacom devices. Hubbell's Metal Raceway features innovative technologies like the Hubbell Handi-Screw for easy box mounting and more data capacity with the HBL750 and HBL4750 series raceways.



Metal Raceway **J4-J14**

Hubbell's Steel Metal Raceway Systems include a choice of single or multi-channel raceways in addition to a quality line of color-matching power and datacom devices.



Non-Metallic Raceway **J15-J27**

Hubbell's Non-Metallic Raceway Systems include a choice of single or multi-channel raceways in addition to a quality line of color matching power and datacom devices.



Pre-Wired Raceway **Section J**

Hubbell has taken Raceway Systems to the next level with Pre-Wired Raceway Systems that are manufactured to your specifications. Pre-Wired Raceway Systems include a choice of Metal and Non-Metallic, single or multi-channel raceways.



Floor Boxes

Hubbell has expanded its offering of traditional flush and recessed floor boxes to include Hubbell SystemOne, a unique modular in-floor system that accommodates the industry's broadest range of power, data, audio/video and voice applications. The sub-plate and universal cover design provides consistent aesthetics regardless of the application.



Raised Access Floor Boxes **I17**

The Hubbell AFB Series of recessed, stamped Steel boxes are suitable for the majority of raised floor applications providing the flexibility, accessibility, capacity and depth profiles needed.



Furniture Connectivity Boxes **B26**

This family of furniture connectivity boxes installs into conference tables and individual work stations to bring power, voice, data, and multimedia directly to the point of use.



MultiConnect Recessed Wall Boxes **B24**

Multi-Connect Recessed Wall Boxes provide a versatile "in the wall" solution for single and multi-service applications.



Fire-Rated Poke-Throughs **I18-I24**

Hubbell's offering of flush, pedestal and furniture feed fire-rated poke-throughs has been expanded to include the unique capabilities of Hubbell SystemOne. This unique modular in-floor system accommodates the industry's broadest range of power, data, audio/video and voice applications. The sub-plate and universal cover design provides consistent aesthetics regardless of the application.



Aluminum Service Poles **I25**

Hubbell's Service Pole offering includes a complete line of gray, ivory, and satin finish extruded Aluminum service poles. These attractive and durable poles effectively distribute power, data, audio/video and voice wiring from above the ceiling to work stations below. They are offered in heights of 10'2", 12'2", and 15'2" and accommodate a wide variety of Hubbell power and datacom device products.