

Explosionproof Fixture Hangers



CPU



EFHU



EXJF



ESD



EFHC



GRF with Canopy

Page	Description
2,3	Features: All Fixture Hangers
4	CPU and EFHU Fixture Hangers
4	Connection Block
9	Dimensions
11	Installation Examples
5	EXJF Flexible Fixture Hangers
5	Dimensions of EXJF
5	ESD and ESS Swivels
10	Dimensions of ESD and ESS
11	Installation Examples
6	EFHC and EFCA Fixture Hangers
6	Connection Block
10	Dimensions
11	Installation Examples
7	GRF Conduit Outlet Boxes and Fixture Hanger Covers
7	Covers
7	Canopies
9	Dimensions
11	Installation Examples
8	Accessories
8	Locking Couplings
8	Supports
10	Dimensions and Wiring Capacities
11	Installation Examples

Explosionproof Fixture Hangers, Hanger Couplings, Covers and Accessories

UNILETS® for use with Threaded Metal Conduit.

Applications

- Fixture hangers and accessories for suspension of industrial type HID, incandescent, and fluorescent lighting fixtures in Class I, Class II, and Class III classified locations.

- Suitable for use in areas where moisture, dust and corrosive atmospheres are present.

- CPU, EFHU, EFHC, and EFHCA hangers and GRF conduit outlet boxes each have smooth, rounded integral bushing in each hub to protect conductor insulation.

Features: CPU and EFHU Hangers

- Boxes have cast mounting lugs. Box and hub cover provide a complete assembly for suspending lighting fixtures in classified locations.

- CPU20 Hangers are used where fixture stem is less than 12" long or with EXJF, ESD, or ESS where fixture stem is more than 12" long.

- EFHU Flexible Hangers meet NEC Sec. 501 requirement for flexible suspension where fixture stem is more than 12" long.

- Cushion design protects against vibration, and swivel action (any direction up to 15° from vertical) protects fixture if accidentally struck.

- EFHU Flexible Cushion Hangers available in three spring ranges to support fixture weights of 12 to 48 lbs. and 48 to 120 lbs.

- CB205 Connection Block available for connecting all wires without splices.

- Ground-joint mating surfaces assure flame-tight fit.

- Hanger has setscrew in stem hub to prevent fixture stem from turning.

Features: EFHC and EFHCA Fixture Hangers

- EFHC and EFHCA Fixture Hangers are used where fixture stem is less than 12" long or with EXJF, ESD, or ESS where fixture stem is more than 12" long.

- Raintight when used with O-Ring (use GRG-1 listed in Cat. Sec. J).

- Provided with threaded removable cover for convenience in pulling or splicing conductors.



① CPU Non-Flexible Hanger



② EFHU Flexible Cushion Hanger



③ EFHC Fixture Hanger



④ EXJF Flexible Coupling Hange



⑤ GRF Conduit Outlet Box with Fixture Hanger Canopy



⑥ ESD Swivel Hanger

Explosionproof Fixture Hangers, Hanger Couplings, Covers and Accessories

UNILETS® for use with Threaded Metal Conduit.

- Mounting strap available for fastening EFHC or EFHCA to a mounting surface.
- CB202 Connection Block available for convenience in connecting line and fixture wires without splices.
- Hanger has setscrew in stem hub to prevent fixture stem from turning.

Features: EXJF Hanger Coupling

- Ⓞ Meets NEC Sec. 501 requirement for flexible suspension where fixture stem is more than 12" long.
- Watertight construction.
- Convenient method for attaching Explosionproof lighting fixtures to non-flexible hangers.
- Allows free swing of lighting fixture in any direction. Absorbs shock, prevents damage to conduit and connections.
- Assures plumb hanging of fixture.
- Both end fittings are female with removable male close nipples. To make union end-coupling, remove nipple from either end and thread in a 1/2" or 3/4" UNY Union listed in Catalog Section I.
- Female end fittings have setscrews with screwdriver slot to allow locking of conduit. Prevents turning of fixture stem and nipple.

Features: GRF Hangers

- Ⓞ GRF Conduit Outlet Box with Fixture Hanger Canopy or Cover is used where fixture stem is less than 12" long or with EXJF, ESD, or ESS where fixture stem is more than 12" long.
- Raintight when used with O-Ring (see Sec. J for O-Rings).
- For use with hub cover or canopy. Canopy has threaded cover opening for convenience in splicing conductors.
- Cover and canopy hubs have setscrews with screwdriver slots to allow locking of conduit. Prevents fixture stem from turning.

Features: ESD and ESS Swivels

- Ⓞ For use with rigid fixture hangers where fixture stem is more than 12" long.

Standard Materials

- *CPU and EFHU Fixture Hangers and Separate Covers*: malleable iron (EFHU Flexible Hanger has brass fixture stem hub assembly).
- *EXJF Flexible Hanger Couplings*: outer bronze braid, inner brass core with insulating liner and brass end fittings.
- *ESD and ESS Swivels*: malleable iron.
- *EFHC and EFHCA Fixture Hangers*: malleable iron body with copper-free aluminum cover.
- *EFHC and EFHCA Mounting Strap and LC Locking Coupling*: steel.
- *GRF Conduit Outlet Box and Fixture Hanger Covers and Canopies*: malleable iron.
- *EFHM, EFHF, and FHS Supports*: malleable iron.

Standard Finishes

- *CPU20 Rigid Fixture Hangers*: Body: triple-coat—(1) zinc electroplate, (2) dichromate, and (3) epoxy powder coat. Cover: zinc electroplate and clear chromate.
- *Separate CPU20 Covers*: zinc electroplate and clear chromate.
- *EFHU Flexible Cushion Fixture Hangers*: triple-coat—(1) zinc electroplate, (2) dichromate, and (3) epoxy powder coat.
- *EXJF Flexible Couplings*: natural finish.
- *ESD and ESS Swivels*: triple-coat—(1) zinc electroplate, (2) dichromate, and (3) epoxy powder coat.
- *EFHC and EFHCA Fixture Hangers*: Body: triple-coat—(1) zinc electroplate, (2) dichromate, and (3) epoxy powder coat. Cover: epoxy powder coat.
- *EFHC/EFHCA Mounting Strap and LC Locking Coupling*: zinc electroplate.
- *GRF Conduit Outlet Boxes and Fixture Hanger Canopies and Covers*: Bodies: triple-coat—(1) zinc electroplate, (2) dichromate, and (3) epoxy powder coat. Covers and Canopies: zinc electroplate and clear chromate.

- *EFH Hook and FHS Supports*: zinc electroplate and clear chromate.

Options

- EXJF available with PVC coating, consult factory.
- EXJF available in stainless steel. Add SS suffix to catalog number, consult factory.

Compliances

- UL Standard 886.
- Appleton malleable iron products conform to ASTM A47-77, Grade 32510, which has the following properties: tensile strength, 50,000 psi; yield, 32,000 psi, and elongation, 10%.
- Appleton aluminum products are produced from a high strength copper-free (4/10 of 1% max.) alloy.
- Suitable for Class I, Div. 1 & 2, if installed in compliance with NEC 501-9(a)(b) and for Class II, Div. 1 & 2, if in compliance with NEC 502-11(a)(b).








H-4

Class I, Div. 1 and 2
 Groups C,D
 Class II, Div. 1 and 2
 Groups E,F,G
 Class III

CPU and EFHU Fixture Hangers: Explosionproof, Dust-Ignitionproof

UNILETS® for use with Threaded Metal Conduit.

	Conduit Size (Inches)	Fixture Stem Size (Inches)	Support Wt., Lbs. and Kilograms	Catalog Number Malleable Iron
CPU Fixture Hangers, Non-Flexible Type—Form 20				
Furnished with cast mounting lugs, four threaded universal 3/4" hubs, four 3/4" to 1/2" reducers, and three 1/2" close-up plugs.				
	1/2 or 3/4	1/2	250 lbs. (112.5kg)	CPU20-50
	1/2 or 3/4	3/4	250 lbs. (112.5kg)	CPU20-75
EFHU Fixture Hangers, Flexible Cushion Type—Form 20				
Furnished with cast mounting lugs, four threaded universal 3/4" hubs, four 3/4" to 1/2" reducers, and three 1/2" close-up plugs.				
	1/2 or 3/4	3/4	12 to 48 lbs. (5.4 to 21.6 kg)	EFHU75-48
	1/2 or 3/4	3/4	48 to 120 lbs. (21.6 to 54.0 kg.)	EFHU75-120
CPU Fixture Hanger Covers, Non-Flexible Type—Form 20				
Furnished with screws.				
		1/2	250 lbs. (112.5 kg)	CPSK20-50
		3/4	250 lbs. (112.5 kg)	CPSK20-75
EFHU Fixture Hanger Covers, Flexible Cushion Type—Form 20				
Furnished with screws. 3/4" to 1/2" reducer supplied for 1/2" fixture stem.				
		3/4	12 to 48 lbs. (5.4 to 21.6 kg)	EFH75-48
		3/4	48 to 120 lbs. (12.6 to 54.0 kg)	EFH75-120
CPU and EFHU Connection Block Accessory				
Mounts directly to drilled and tapped pads in CPU and EFHU hangers. Phenolic, with fastening strap and mounting screws.				
	5-Wire. 20-Ampere. 300-Volt Max.			CB205

Class I, Div. 1 and 2
Groups A,B,C,D
Class II, Div. 1 and 2
Groups E,F,G
Class III

Flexible Fixture Hangers, EXJF Couplings, ESD and ESS Swivels: Explosionproof, Dust-Ignitionproof

UNILETS® for use with Threaded Metal Conduit.
For Use with Rigid Fixture Hangers Where Fixture Stem
is More Than 12" Long.



Size (Inches)	Flexible Length		Overall Length		Catalog Number
	Inches	cm	Inches	cm	
EXJF Flexible Fixture Hanger†					
Raintight Construction. Supplied with two female hubs, each with a removable close nipple. Can be used to make male to male, female to male or female to female. Setscrew with screwdriver slot allows locking of conduit—prevents fixture stem from turning.					
1/2	4.00	10.2	11.06	28.1	EXJF14
3/4	4.00	10.2	11.06	28.1	EXJF24
1/2	6.00	15.2	13.06	33.2	EXJF16
3/4	6.00	15.2	13.06	33.2	EXJF26
1/2	8.00	20.3	15.06	38.3	EXJF18
3/4	8.00	20.3	15.06	38.3	EXJF28
1/2	10.00	25.4	17.06	43.3	EXJF110
3/4	10.00	25.4	17.06	43.3	EXJF210
1/2	12.00	30.5	19.06	48.4	EXJF112
3/4	12.00	30.5	19.06	48.4	EXJF212
1/2	15.00	38.1	22.06	56.0	EXJF115
3/4	15.00	38.1	22.06	56.0	EXJF215
1/2	18.00	45.7	25.06	63.7	EXJF118
3/4	18.00	45.7	25.06	63.7	EXJF218

ESD and ESS Swivels

Malleable iron. Setscrew with screwdriver slot allows locking of conduit—prevents fixture stem from turning.



U.S. Pat. 2,436,127

ESD Swivel

15° swivel from center and full 360° free swing.

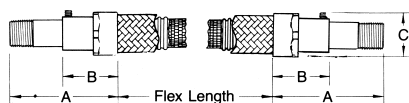
1/2	ESD50
3/4	ESD75

ESS Swivel

15° swivel from center.

1/2	ESS50
3/4	ESS75

†Shaded area indicates items suitable for Class I, Groups A and B in addition to Class I, Groups C and D; Class II, Groups E, F and G; and Class III. Available in stainless steel. Add suffix SS to catalog number. Consult factory.



EXJF Dimensions

Size (In.)	Dimensions in Inches			Dimensions in Centimeters		
	A	B	C	A	B	C
1/2	3.38	1.88	1.44	8.6	4.8	3.7
3/4	3.38	1.88	1.75	8.6	4.8	4.5

H-6

Class I, Div. 1 and 2
Groups A*, B*, C, D
Class II, Div. 1 and 2
Groups E, F, G
Class III

EFHC and EFHCA Fixture Hangers and Accessories: Explosionproof, Dust-Ignitionproof

UNILETS® for use with Threaded Metal Conduit.

Conduit Size (Inches)	Fixture Stem Size (Inches)	Catalog Number
-----------------------	----------------------------	----------------

EFHC and EFHCA Fixture Hangers

Furnished with threaded hubs and cover, less connection block. Malleable iron body with copper-free aluminum cover.



EFHC

EFHC Fixture Hanger

CLASS I, GROUPS B*, C & D
CLASS II, GROUPS E, F & G
CLASS III.

3/4	1/2	EFHC7550* EFHC7575* EFHC1050* EFHC1075*
3/4	3/4	
1	1/2	
1	3/4	



EFHCA

EFHCA Fixture Hanger

CLASS I, GROUPS A*, B, C & D
CLASS II, GROUPS E, F & G AND
CLASS III.

3/4	1/2	EFHCA7550* EFHCA7575* EFHCA1050* EFHCA1075*
3/4	3/4	
1	1/2	
1	3/4	

EFHC and EFHCA Connection Block Accessory—Porcelain



Designed to fit in hanger without fastening.

2 Wire, 20 Amp. 277 Volt

Maximum Wire Size

Two No. 10 AWG large terminal

Two No. 14 AWG small terminal

CB202



EFHC fixture hanger with mounting strap

EFHC and EFHCA Steel Mounting Strap

For fastening EFHC or EFHCA to a mounting surface.

Add suffix "S" to above EFHCA or EFHC catalog numbers.

Add suffix "S"

* Shaded area indicates items suitable for Class I, Groups B, C and D, as well as Class II Groups E, F, and G; and Class III. Sealing fitting must be installed adjacent to enclosure for all conduits for Group B location (EFHC Series);
* Suitable for Class I, Groups A, B, as well as Groups C and D.

Class I, Div. 1 and 2
 Groups C,D
 Class II, Div. 1 and 2
 Groups E,F,G
 Class III

GRF Conduit Outlet Boxes and Fixture Hanger Covers and Canopies: Explosionproof, Dust-Ignitionproof

UNILETS® for use with Threaded Metal Conduit.

	Conduit Size (Inches)	Fixture Stem Size (Inches)	Catalog Number Malleable Iron
--	-----------------------------	----------------------------------	-------------------------------------



GRFC

GRF Flanged Conduit Outlet Boxes Form 1, less Cover.

For use with GRF fixture hanger canopies and covers below. Nominal diameter of cover opening is 3-3/8". Furnished with threaded hubs and ground screw. Flange has four 3/8" mounting slots.



GRFL

1/2
 3/4
 1

GRFC-50LC
 GRFC-75LC
 GRFC-100LC



GRFT

1/2
 3/4
 1

GRFL-50LC
 GRFL-75LC
 GRFL-100LC



GRFX

1/2
 3/4
 1

GRFT-50LC
 GRFT-75LC
 GRFT-100LC

1/2
 3/4
 1

GRFX-50LC
 GRFX-75LC
 GRFX-100LC



GRF Fixture Covers—Form 1

Furnished with external threads for attachment to GRF mounting box above.

Threaded Hub Cover

1/2
 3/4

GRK-50
 GRK-75



Union Hub Cover

3/4

GRK-75U



GRF Fixture Canopies—Form 1


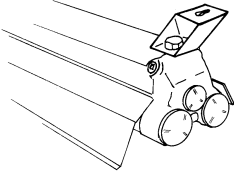
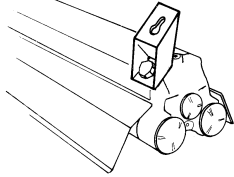







Furnished with external threads for attachment to GRF mounting box above. Threaded cover opening on side for convenience in splicing.

1/2
 3/4
 1

GRK-50C
 GRK-75C
 GRK-100C

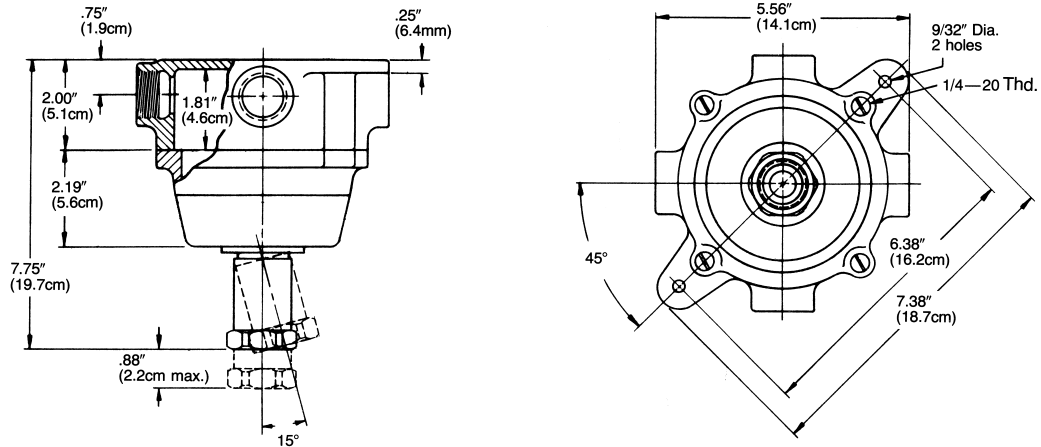
Fixture Hanger Bracket and Accessories

UNILETS® for use with Threaded Metal Conduit.

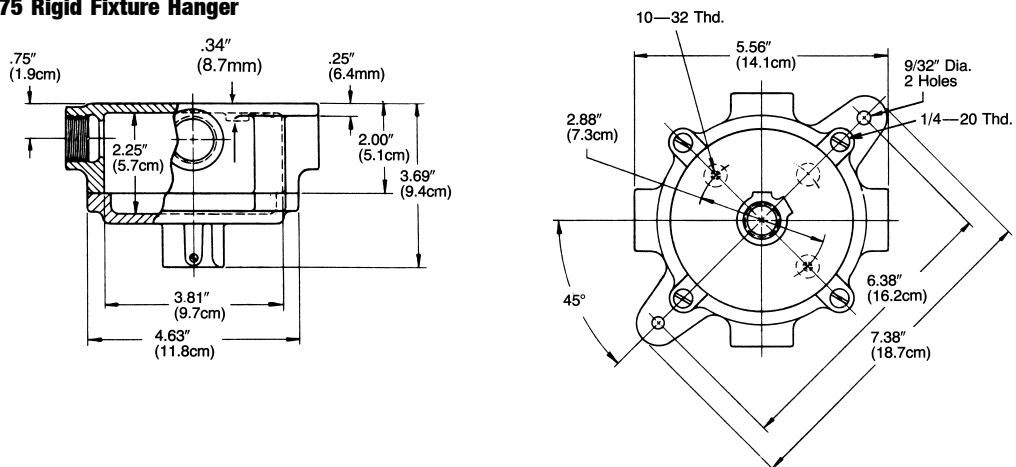
	Size (Inches)	Support Wt. Lbs. and (Kilograms)	Catalog Number
<p>Fixture Hanger Brackets Suitable for use with fixtures with 3/4-14 NPT conduit openings or hubs. Mounts directly to ceiling or wall separately from conduit system. Catalog number includes two brackets and two hexhead bolts. Iron with gray epoxy finish.</p> <p>For dimensions, see Cat. Sec. E, page 12.</p>			
	3/4	200 lbs. (90.0 kg)	FHS1
	Ceiling Mount Projects light downward (90°). Shown mounted to Appleton AH260-118 explosionproof fluorescent lighting fixture.		
	Wall Mount Projects light at 45° angle. Shown mounted to Appleton AH260-118 explosionproof fluorescent lighting fixture.		
<p>Safety Support Hooks and Rigid Support for Dummy Side of Lighting Fixtures Complete assembly includes two hooks and one rigid support. Each hook supplied with a screw for closing 3/8" jaw opening. Rigid Support straddles max. 1-1/4" conduit. (Chain shown in installation view not furnished.)</p>			
	3/4	200 lbs. (90.0 kg)	AC-KT
			
<p>LC Steel Locking Couplings Setscrews with Allen head fasten on outside of hub and fixture stem. Prevents fixture stem from turning in hubs not normally supplied with setscrews. 3/4" fixture stem.</p>			
	3/4 1	— —	SLC75 SLC1075
			
<p>Safety Support Hooks for Dummy Side of Lighting Fixtures Supplied with screw for closing 3/8" jaw opening.</p>			
	Male 1/2 3/4	200 lbs. (90.0 kg)	EFHM-50 EFHM-75
	Female 1/2 3/4	200 lbs. (90.0 kg)	EFHF-50 EFHF-75
EFHM			
EFHF			
<p>Rigid Support for Fluorescent Lighting Fixtures (Dummy Side) Will straddle max. 1-1/4" conduit.</p>			
	1/2 & 3/4	350 lbs. (157.5 kg)	FHS5075

Dimensions: EFHU and CPU Fixture Hangers, GRF Boxes, and GR Canopies

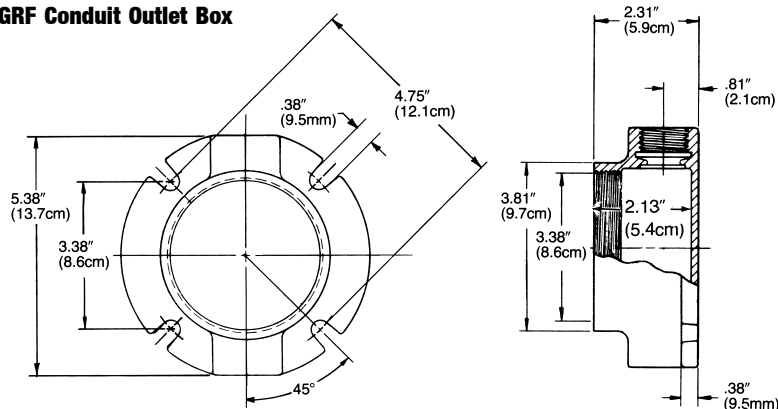
EFHU Flexible Cushion Fixture Hanger



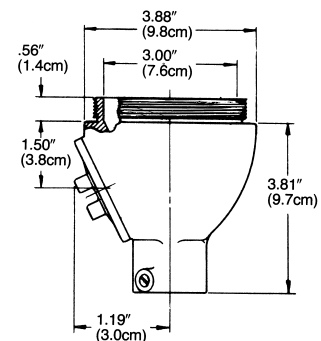
CPU50 and CPU75 Rigid Fixture Hanger



GRF Conduit Outlet Box



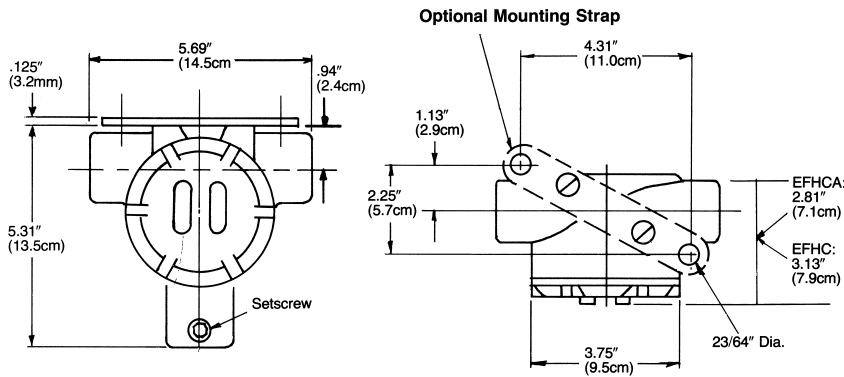
GRF Canopy



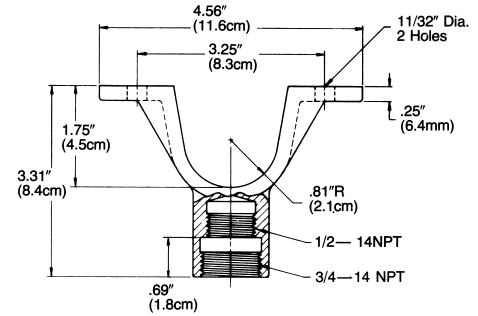
H-10

Dimensions: EFHC, EFHCA, FHS, ESS, ESD and EFH. All Hangers: Cu. In. Wiring Capacity

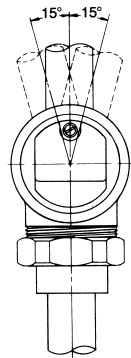
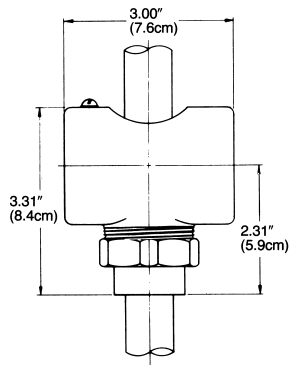
EFHCA and EFHC Fixture Hangers



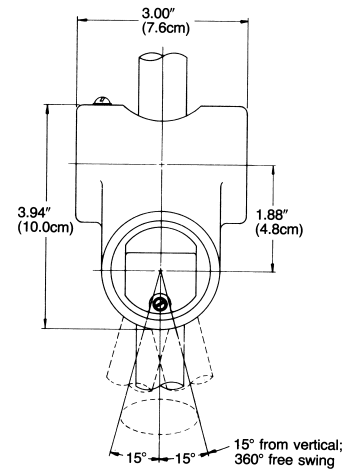
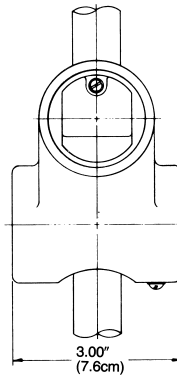
FHS Rigid Support



ESS Swivel



ESD Swivel

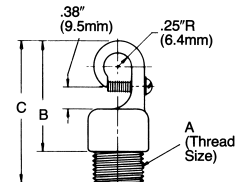


Volume in Cubic Inches and Cubic Centimeters Wiring Capacity

Type	Size	Vol. (Cu. In.)	Vol. (Cu. cm)
CPU	Form 20	24.0	393.3
EFHC	All	22.0	360.5
EFHCA	All	17.0	278.6
EFHU	Form 20	24.0	393.3
GRF	All	18.0	295.0
GRK	GRK-50C, 75C, 100C	16.0	262.2

Cat. No.	A	B	C
EFHM-50	1/2-14 NPT	2.00" (5.1cm)	2.63" (6.5cm)
EFHM-75	3/4-14 NPT	2.13" (5.2cm)	2.88" (7.0cm)
EFHF-50	1/2-14 NPT	2.00" (5.1cm)	N/A
EFHF-75	3/4-14 NPT	2.13" (5.2cm)	N/A

EFHM and EFHF Support Hooks



Typical Explosionproof Lighting Fixture Installations using Appleton Hangers and Conduit Outlet Bodies

Pendant Suspension of Lighting Fixtures in Class I and Class II, Div. 1 and 2 areas.

